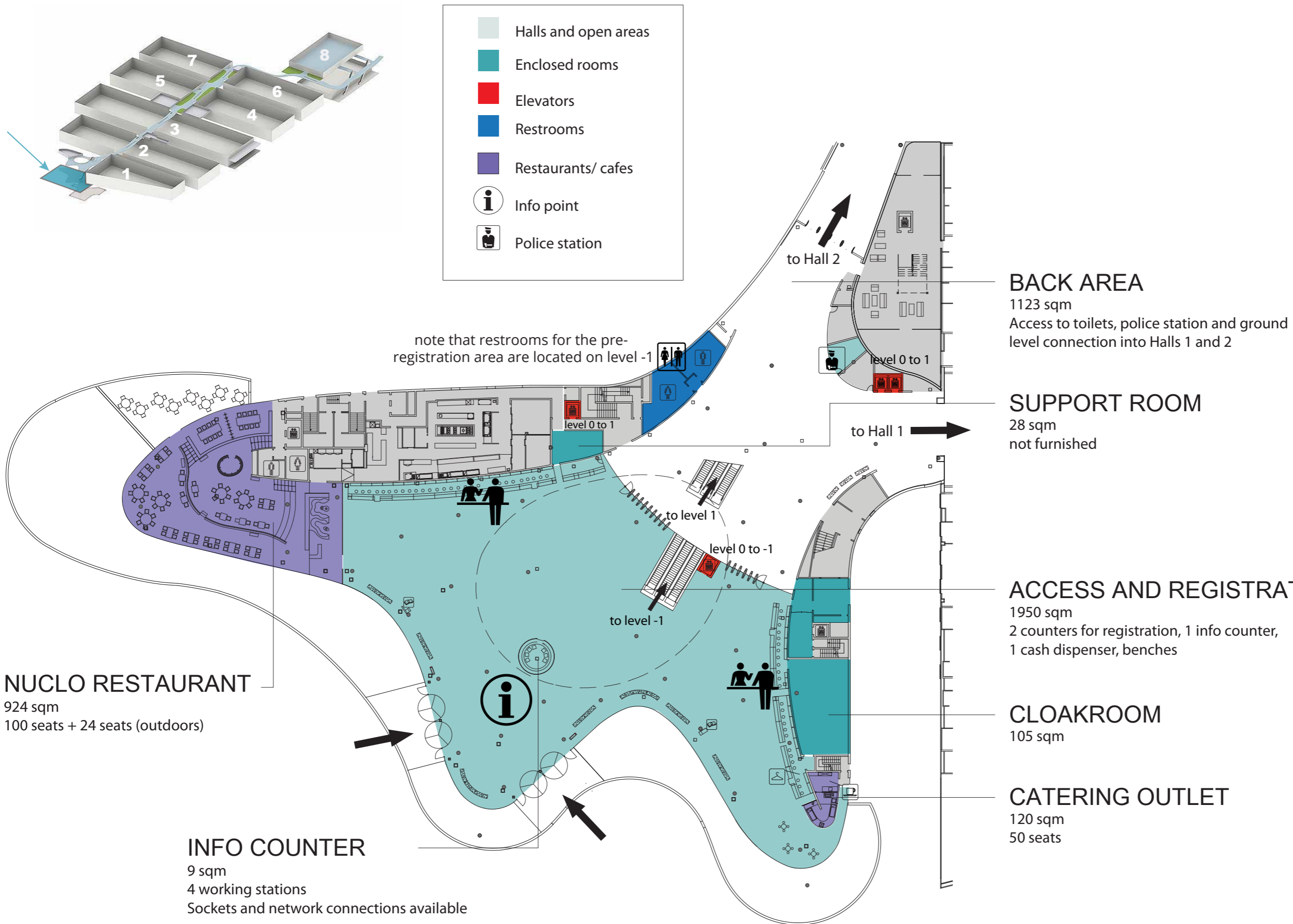
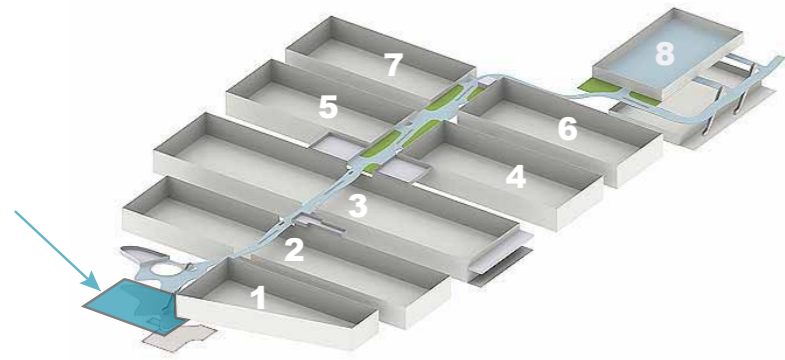


# SOUTH ENTRANCE REGISTRATION

## LEVEL 0



- Halls and open areas
- Enclosed rooms
- Elevators
- Restrooms
- Restaurants/ cafes
- i Info point
- 👮 Police station



### BACK AREA

1123 sqm  
Access to toilets, police station and ground level connection into Halls 1 and 2

### SUPPORT ROOM

28 sqm  
not furnished

### ACCESS AND REGISTRATION

1950 sqm  
2 counters for registration, 1 info counter,  
1 cash dispenser, benches

### CLOAKROOM

105 sqm

### CATERING OUTLET

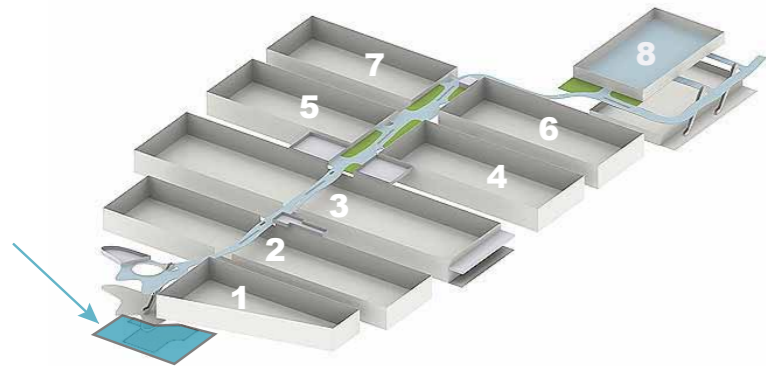
120 sqm  
50 seats

### NUCLO RESTAURANT

924 sqm  
100 seats + 24 seats (outdoors)

### INFO COUNTER

9 sqm  
4 working stations  
Sockets and network connections available



Entrance Level -1 Customer Care

### WORKING AREA

129 sqm  
 (17 Table 180x80cm, 13 Office Wheely chair, 16 Chest of Drawers, 4 Cabinets, 6 Waste Basket, 2 Coat Stands)

### OFFICES

- A: 20 sqm (not furnished)
- B: 25 sqm (1 Table 180x80cm, 2 Office Wheely chair, 2 Chest of Drawers, 1 Cabinet, 1 Waste Basket)
- C: 17 sqm (1 Cristal table, 1 Office Wheely chair, 1 Chest of Drawers, 2 Cabinets, 1 Waste Basket)
- D: 17 sqm (1 Cristal table, 1 Office Wheely chair, 1 Chest of Drawers, 2 Cabinets, 1 Waste Basket)
- E: 17 sqm (1 Cristal table, 1 Office Wheely chair, 1 Chest of Drawers, 2 Cabinets, 1 Waste Basket)

### LOBBY

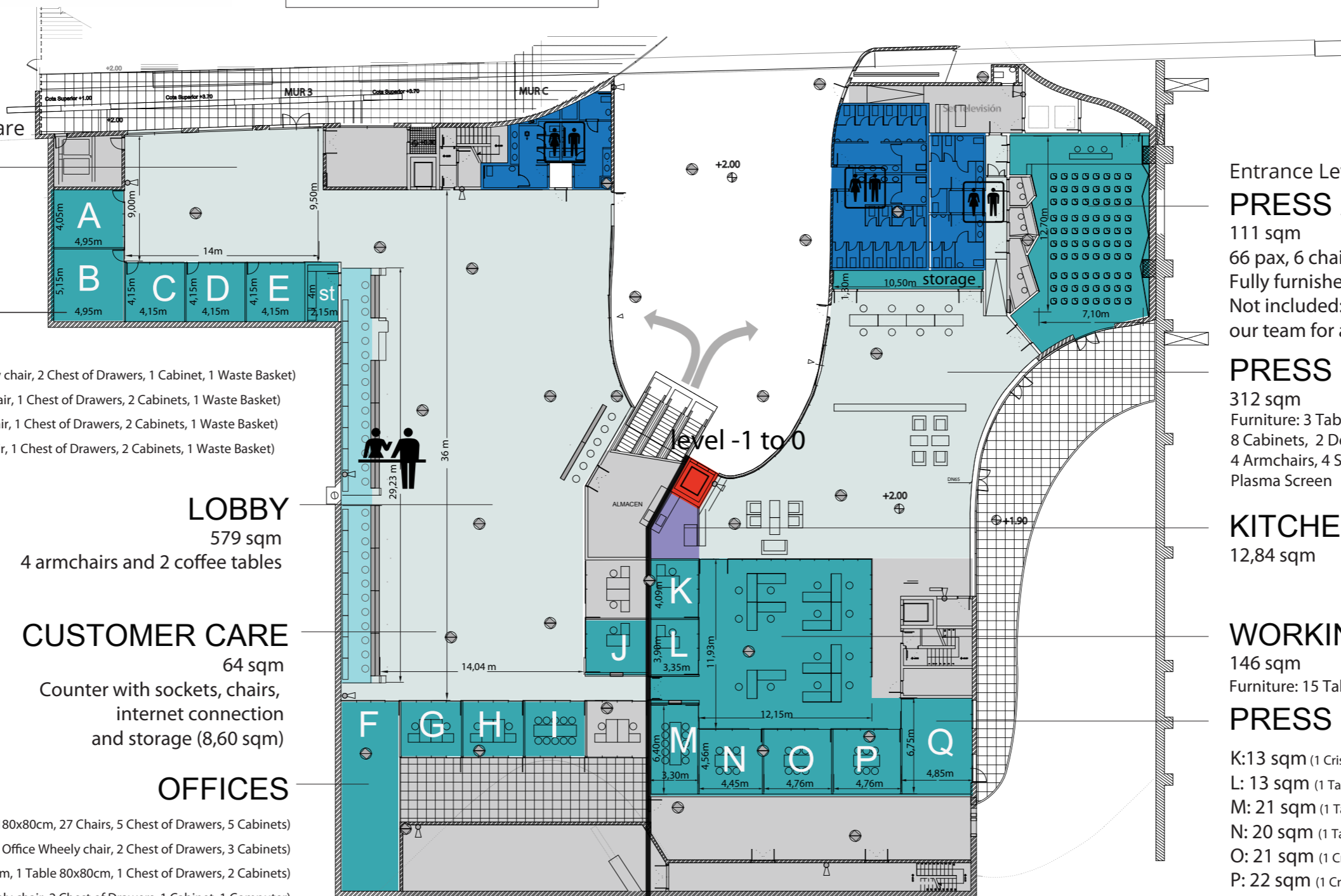
579 sqm  
 4 armchairs and 2 coffee tables

### CUSTOMER CARE

64 sqm  
 Counter with sockets, chairs, internet connection and storage (8,60 sqm)

### OFFICES

- F: 54 sqm (10 Table 180x80cm, 27 Chairs, 5 Chest of Drawers, 5 Cabinets)
- G: 17 sqm (2 Table 180x80cm, 5 Office Wheely chair, 2 Chest of Drawers, 3 Cabinets)
- H: 17 sqm (2 Table 180x80cm, 1 Table 80x80cm, 1 Chest of Drawers, 2 Cabinets)
- I: 17 sqm (1 Table 180x80cm, 2 Office Wheely chair, 2 Chest of Drawers, 1 Cabinet, 1 Computer)
- J: 17 sqm (logistics use)



Entrance Level -1 PRESS

### PRESS AUDITORIUM

111 sqm  
 66 pax, 6 chairs on stage behind desk  
 Fully furnished, AV and translation cabins.  
 Not included: technical service. Please contact our team for a quote.

### PRESS LOUNGE

312 sqm  
 Furniture: 3 Table 200x80cm, 3 Office Wheely chair  
 8 Cabinets, 2 Desktop Computers, 3 Sofas (3 pax)  
 4 Armchairs, 4 Small tables, 10 Small chairs, 1 Plasma Screen

### KITCHEN

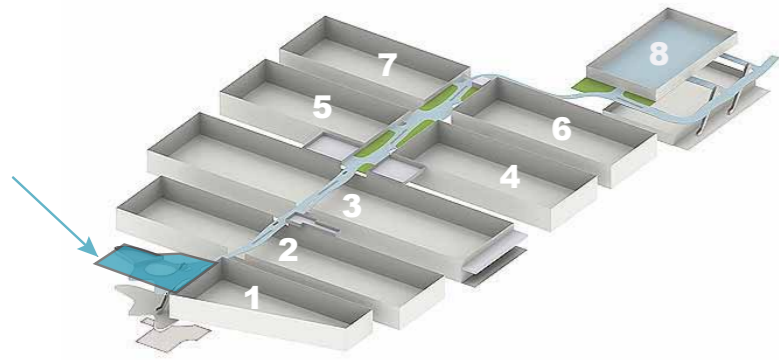
12,84 sqm

### WORKING AREA

146 sqm  
 Furniture: 15 Table 200x80cm, 10 Office Wheely chair

### PRESS OFFICES

- K: 13 sqm (1 Cristal Table, 1 Chair, 1 Cabinet)
- L: 13 sqm (1 Table 120x120cm, 2 Chairs, 1 Cabinet)
- M: 21 sqm (1 Table 300x140cm, 10 Chairs)
- N: 20 sqm (1 Table 180x80cm, 3 Chairs, 1 Cabinet)
- O: 21 sqm (1 Cristal Table, 1 Chair, 1 Cabinet, 1 Chest of Drawers)
- P: 22 sqm (1 Cristal Table, 3 Chairs, 2 Cabinets)
- Q: 33 sqm (1 Panel Cristal Table, 3 chairs + 26 Chairs)



- Halls and open areas
- Enclosed rooms
- Elevators
- Restrooms
- Restaurants/ cafes

Conference Center 1  
**ROOM 1.1**  
138 sqm  
Translation cabin

Conference Center 1  
**ROOM 1.2**  
62 sqm

Conference Center 1  
**ROOM 1.3**  
56 sqm  
Translation cabin

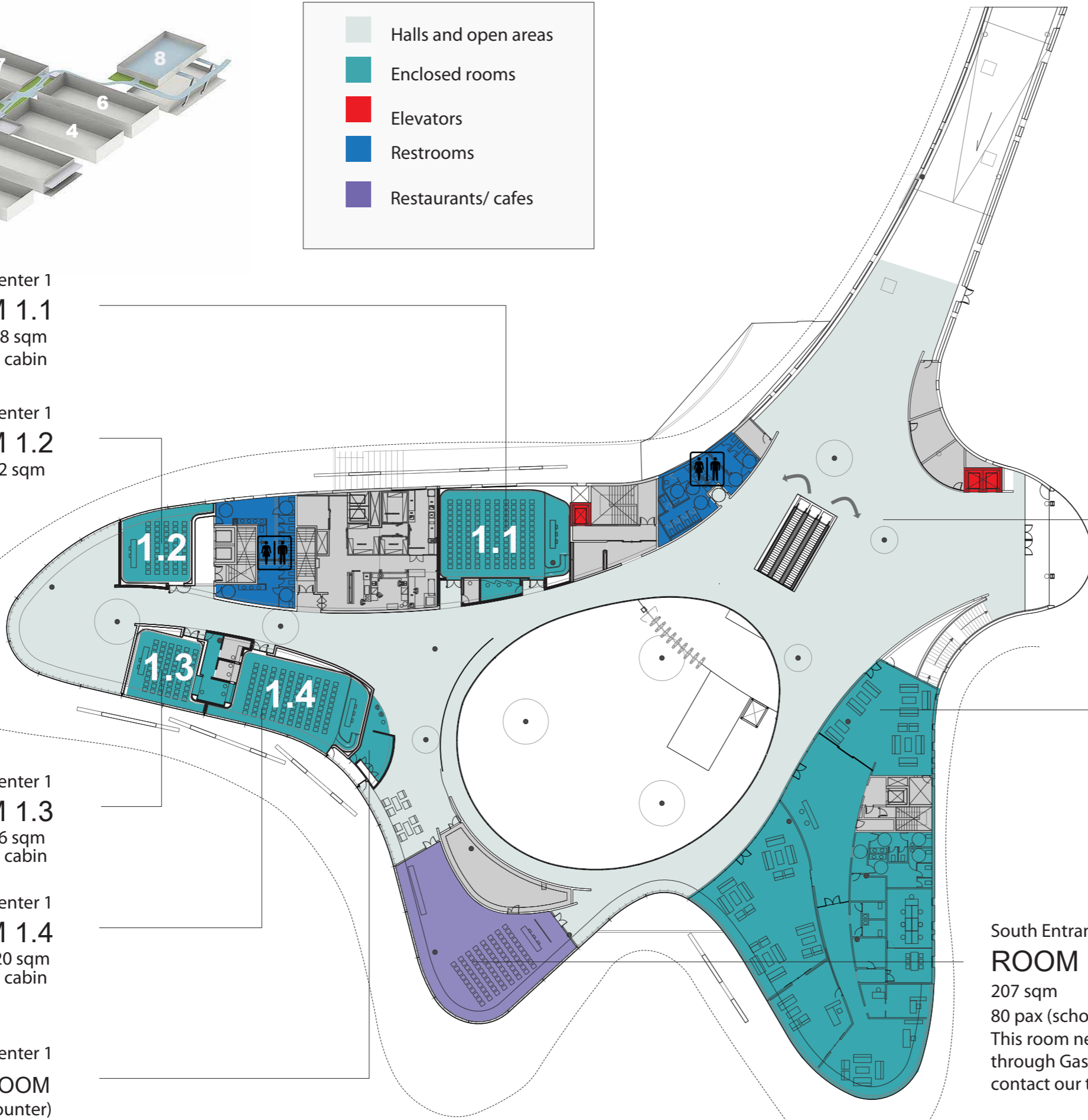
Conference Center 1  
**ROOM 1.4**  
120 sqm  
Translation cabin

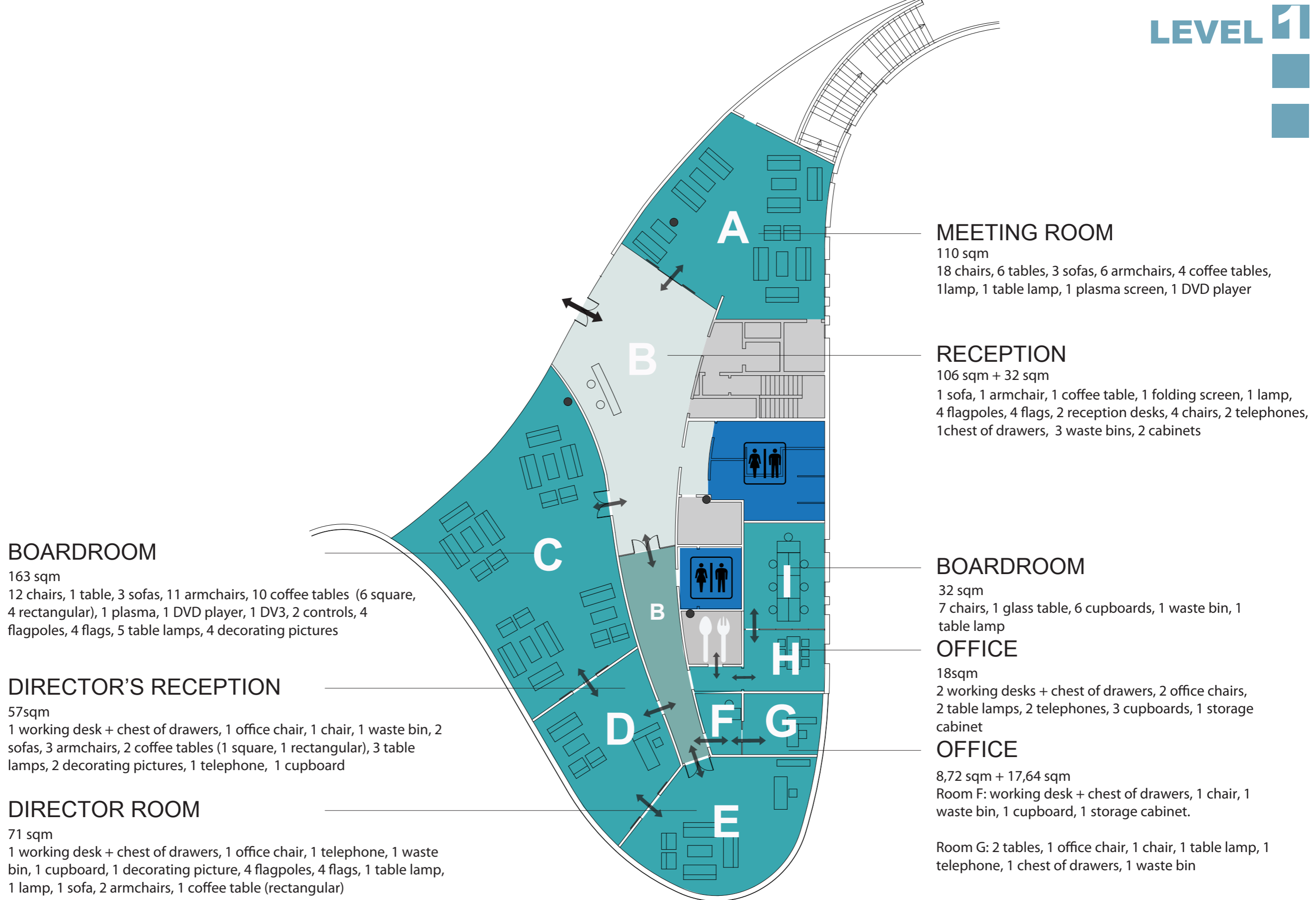
Conference Center 1  
**RECEPTION/CLOAKROOM**  
13 sqm (back) + 8sqm (counter)

South Entrance Level 1  
**LOBBY LEVEL 1**  
1,875 sqm  
4 wooden benches

South Entrance level 1 Protocol  
**PROTOCOL AREA**  
738 sqm

South Entrance level 1 CC1  
**ROOM 1.5**  
207 sqm  
80 pax (school format)  
This room needs to be booked through Gastrofira. Please contact our team for details





### MEETING ROOM

110 sqm  
 18 chairs, 6 tables, 3 sofas, 6 armchairs, 4 coffee tables,  
 1 lamp, 1 table lamp, 1 plasma screen, 1 DVD player

### RECEPTION

106 sqm + 32 sqm  
 1 sofa, 1 armchair, 1 coffee table, 1 folding screen, 1 lamp,  
 4 flagpoles, 4 flags, 2 reception desks, 4 chairs, 2 telephones,  
 1 chest of drawers, 3 waste bins, 2 cabinets

### BOARDROOM

32 sqm  
 7 chairs, 1 glass table, 6 cupboards, 1 waste bin, 1  
 table lamp

### OFFICE

18sqm  
 2 working desks + chest of drawers, 2 office chairs,  
 2 table lamps, 2 telephones, 3 cupboards, 1 storage  
 cabinet

### OFFICE

8,72 sqm + 17,64 sqm  
 Room F: working desk + chest of drawers, 1 chair, 1  
 waste bin, 1 cupboard, 1 storage cabinet.  
 Room G: 2 tables, 1 office chair, 1 chair, 1 table lamp, 1  
 telephone, 1 chest of drawers, 1 waste bin

### BOARDROOM

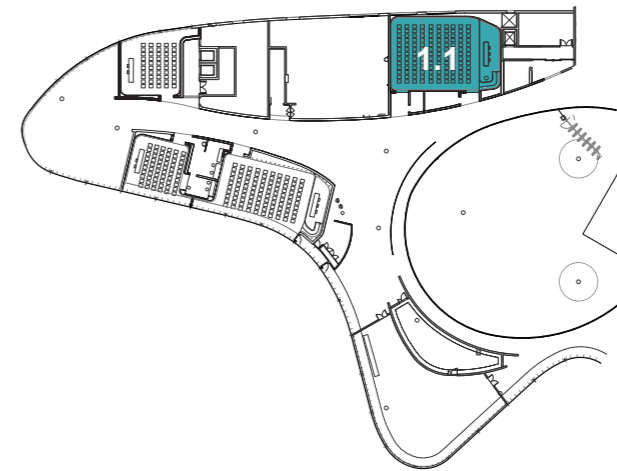
163 sqm  
 12 chairs, 1 table, 3 sofas, 11 armchairs, 10 coffee tables (6 square,  
 4 rectangular), 1 plasma, 1 DVD player, 1 DV3, 2 controls, 4  
 flagpoles, 4 flags, 5 table lamps, 4 decorating pictures

### DIRECTOR'S RECEPTION

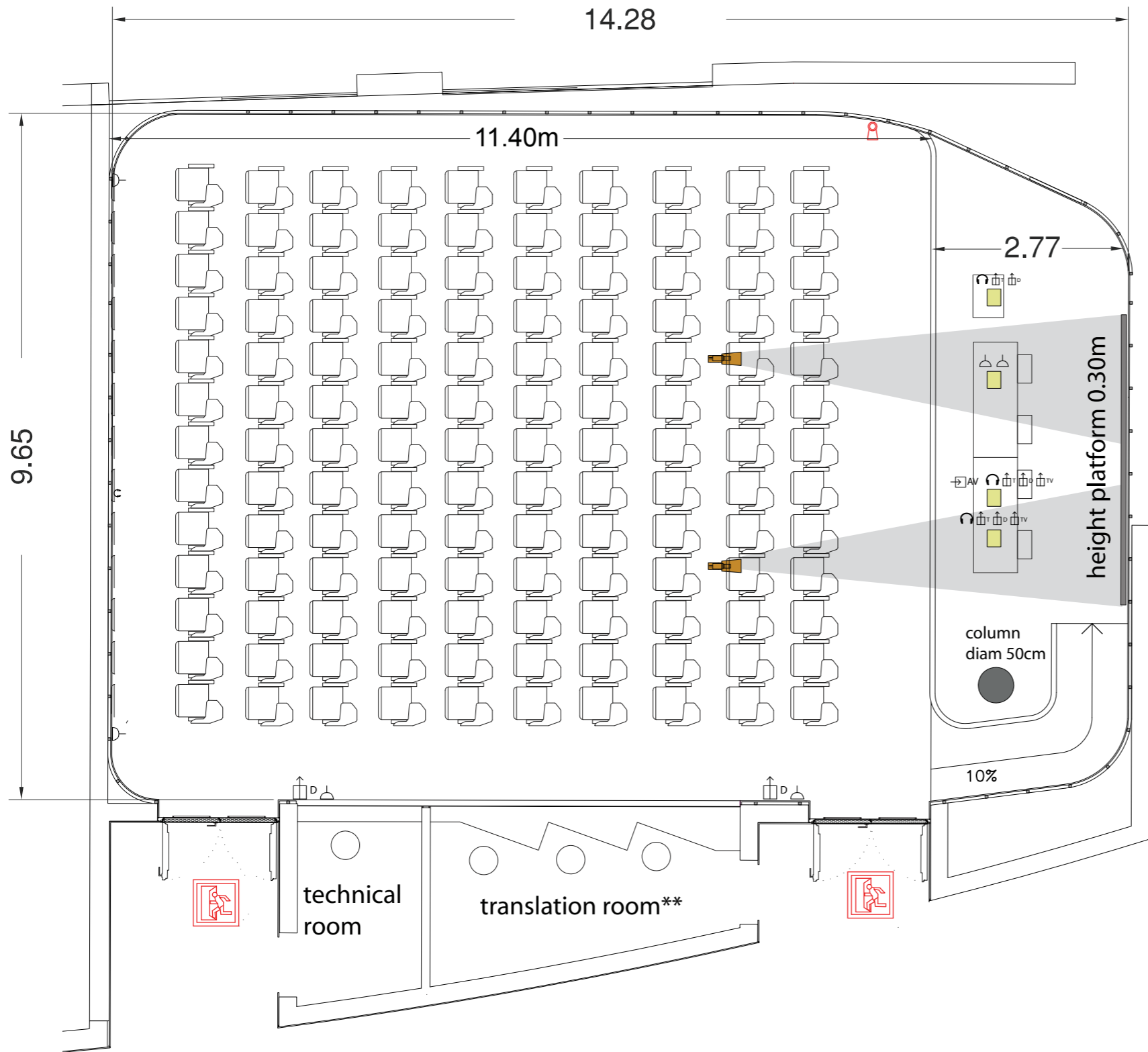
57sqm  
 1 working desk + chest of drawers, 1 office chair, 1 chair, 1 waste bin, 2  
 sofas, 3 armchairs, 2 coffee tables (1 square, 1 rectangular), 3 table  
 lamps, 2 decorating pictures, 1 telephone, 1 cupboard

### DIRECTOR ROOM

71 sqm  
 1 working desk + chest of drawers, 1 office chair, 1 telephone, 1 waste  
 bin, 1 cupboard, 1 decorating picture, 4 flagpoles, 4 flags, 1 table lamp,  
 1 lamp, 1 sofa, 2 armchairs, 1 coffee table (rectangular)



138 sqm  
 Room height : 4,40m  
 Screens : 1 for 2 separate projectors  
 2X head tables: dimensions of each: 162 X 60cm, 80cm height of front panel  
 Lectern under request and quote



- Emergency exit
- Fire extinguisher
- Built-in floor box
- Video connection
- Projector
- Sound connection
- Telephone line
- Data/internet line (10Mb)
- TV/antenna line
- Power socket 1.2 Kw
- Internet Wifi available up to 50 users

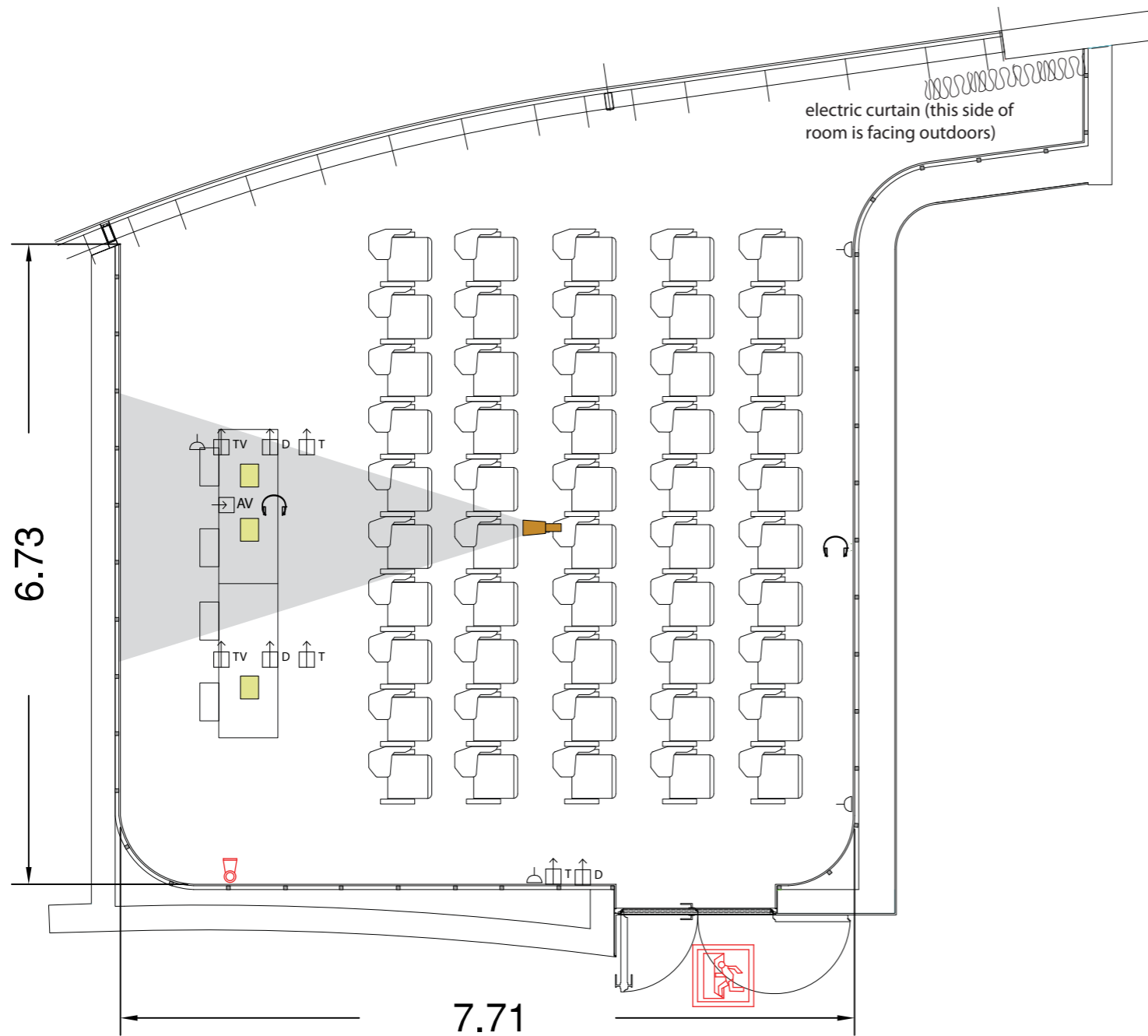
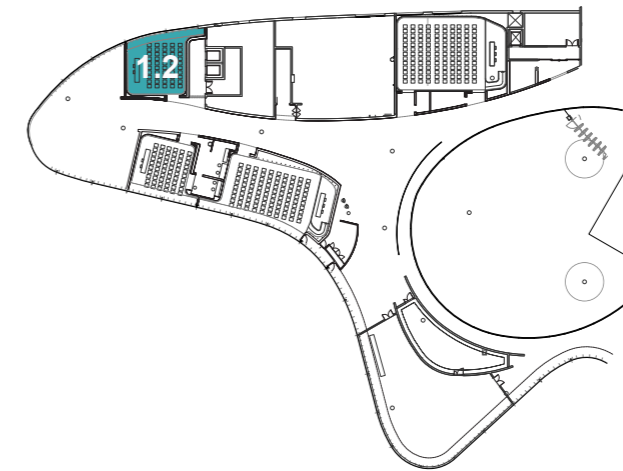
AV equipment included in the room\*:  
 Welcome plasma screen: resolution 1280 X 1024px. Format: JPG or WMV (Windows Media Video 30fps).  
 Loud speakers, 1 retractable projector screen 600x340 cm, 2 projectors 16:10 6500 ansi, 2 table microphones, 2 lectern microphones, 1 lapel microphone, 1 handheld microphone, DVD player, 2 cameras (the events can be recorded using the cameras, although the quality of image is not in high definition (460 lines). You should bring writable DVDs if you want your event to be recorded).

\*Not included: technical service. Please contact our team for a quote.

\*\*Use of translation cabin: the connections are included in the room, but if you require to use the translation room, please contact our team for a quote of translation headphones.

ROOM CAPACITY					
Theatre 130	Classroom** 50	U shape 35	Boardroom 40	Banquet NO	Cocktail NO

\*\*Room furnished with tablet arm chairs.  
 The default layout of the room is theatre style. If you wish to have a different layout, please contact our team (for a quote).



62 sqm  
 Room height : 4,40m  
 Screens : 1  
 2X head tables: dimensions of each: 162 X 60cm, 80cm height of front panel  
 Lectern under request and quote

- Emergency exit
- Fire extinguisher
- Built-in floor box
- Video connection
- Projector
- Sound connection
- Telephone line
- Data/internet line (10Mb)
- TV/antenna line
- Power socket 1.2 Kw
- Internet Wifi available up to 50 users

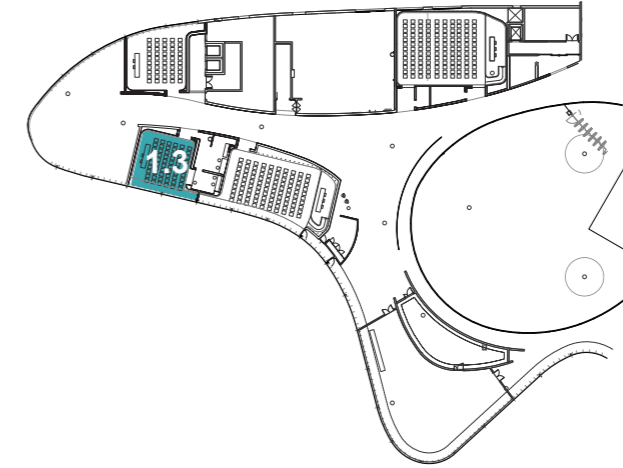
AV equipment included in the room\*:

Welcome plasma screen: resolution 1280 X 1024px. Format: JPG or WMV (Windows Media Video 30fps).  
 Loud speakers, 1 retractable projector screen 300x200cm, 1 projector 16:9 4000 ansi and DVD player.

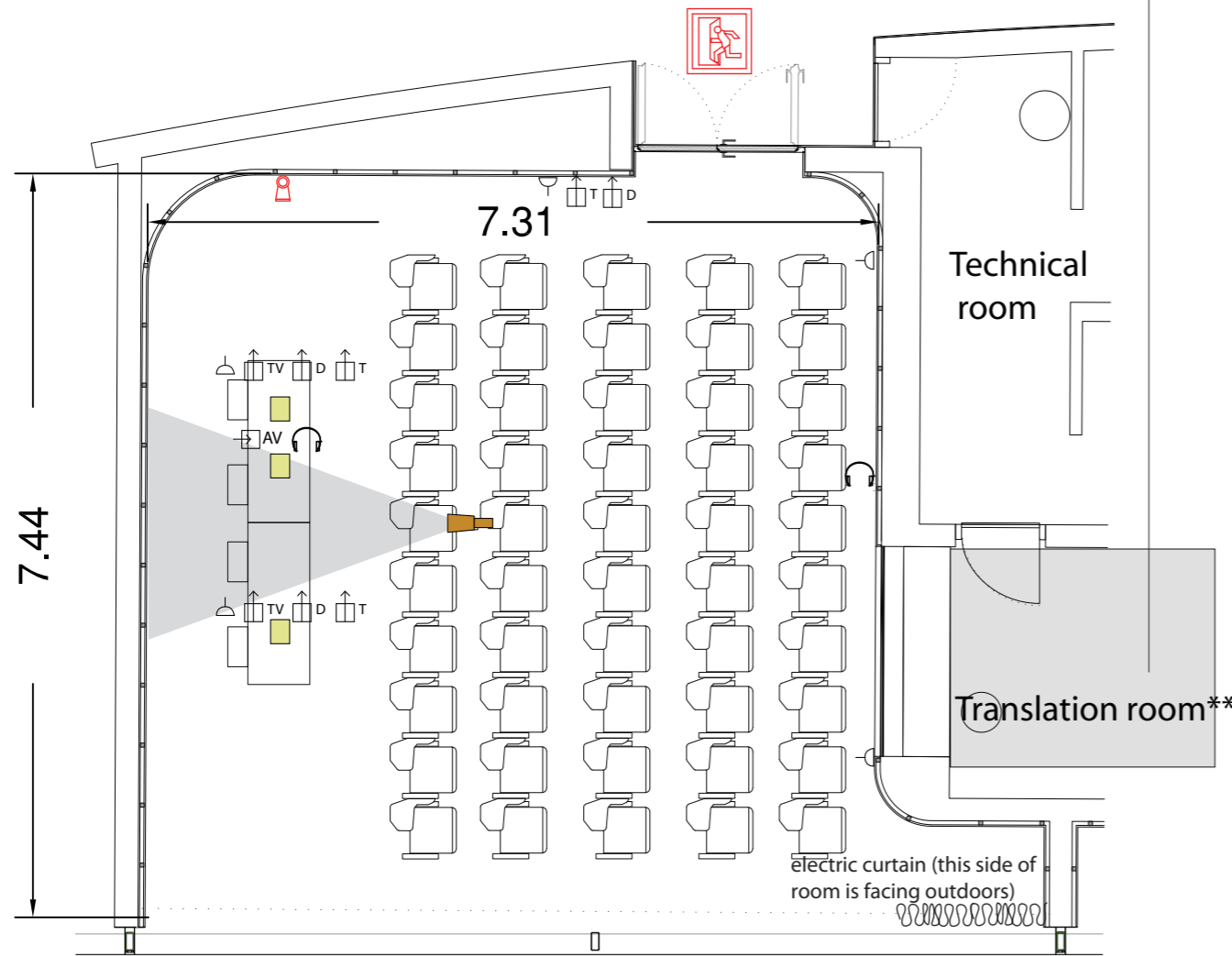
\*Not included: technical service. Please contact our team for a quote.

ROOM CAPACITY					
Theatre 40	Classroom** 25	U shape 15	Boardroom 20	Banquet NO	Cocktail NO

\*\*Room furnished with tablet arm chairs.  
 The default layout of the room is theatre style. If you wish to have a different layout, please contact our team (for a quote).



This translation cabin is shared between rooms 1.3 and 1.4 and translations cannot be done simultaneously in both rooms.



56 sqm  
 Room height : 4,40m  
 Screens : 1  
 2X head tables: dimensions of each: 162 X 60cm, 80cm height of front panel  
 Lectern under request and quote

- Emergency exit
- Fire extinguisher
- Built-in floor box
- Video connection
- Projector
- Sound connection
- Telephone line
- Data/internet line (10Mb)
- TV/antenna line
- Power socket 1.2 Kw
- Internet Wifi available up to 50 users

AV equipment included in the room\*:

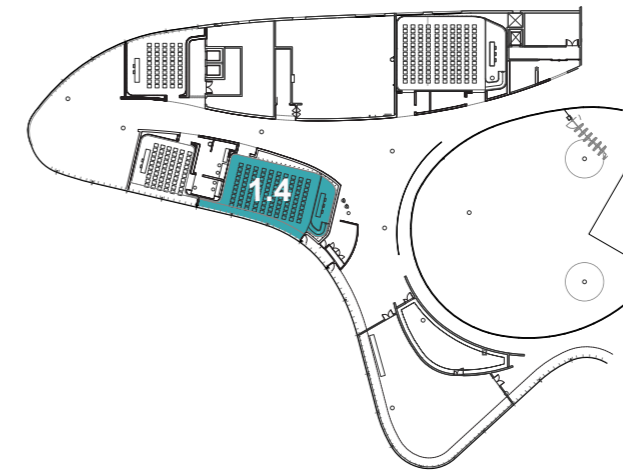
Welcome plasma screen: resolution 1280 X 1024px. Format: JPG or WMV (Windows Media Video 30fps).  
 Loud speakers, 1 retractable projector screen 300x200cm, 1 projector 16:9 4000 ansi and DVD player.

\*Not included: technical service. Please contact our team for a quote.

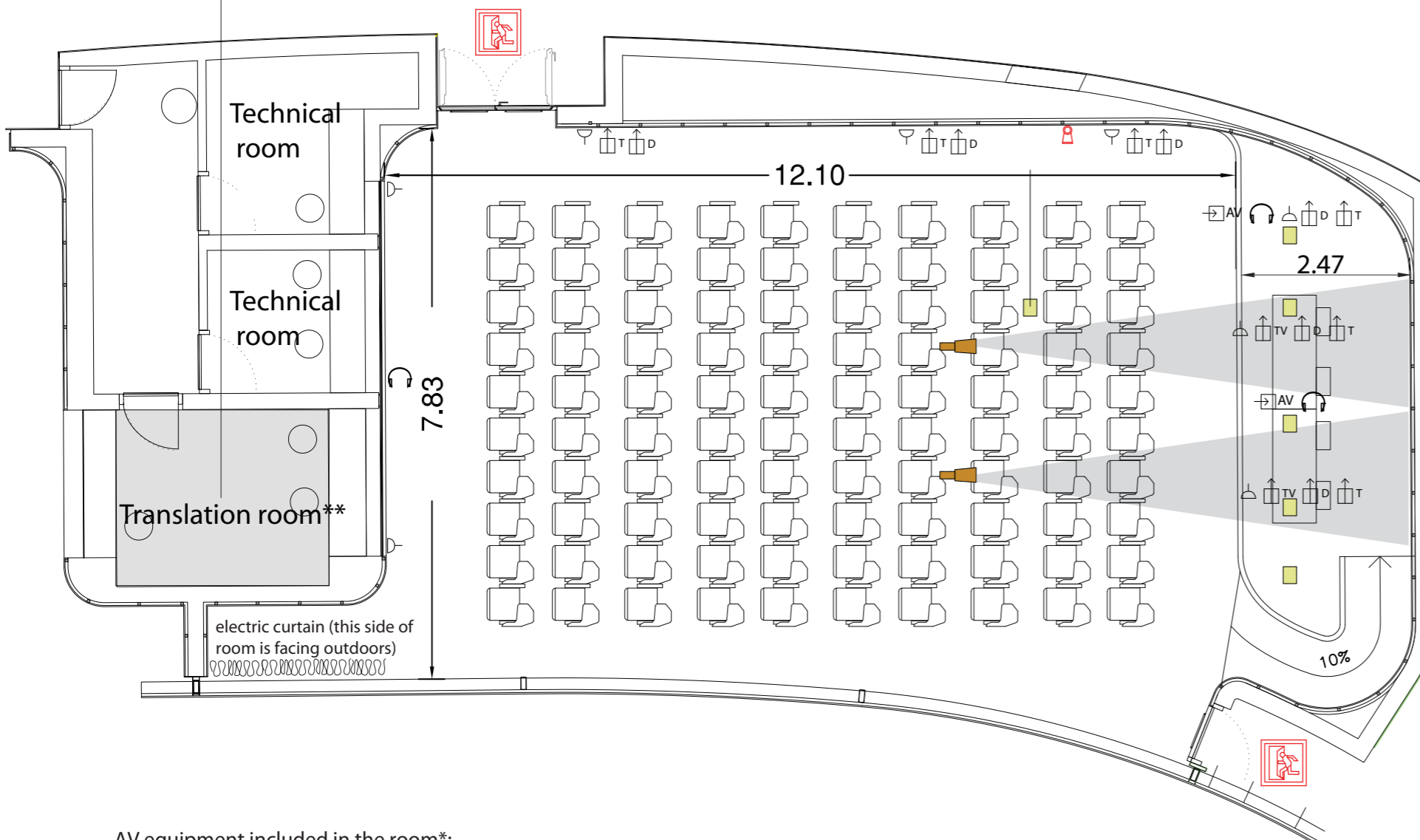
\*\* Use of translation cabin: the connections are included in the room, but if you require to use the translation room, please contact our team for a quote of translation headphones.

ROOM CAPACITY					
Theatre 50	Classroom** 25	U shape 15	Boardroom 20	Banquet NO	Cocktail NO

\*\*Room furnished with tablet arm chairs.  
 The default layout of the room is theatre style. If you wish to have a different layout, please contact our team (for a quote).



This translation cabin is shared between rooms 1.3 and 1.4 and translations cannot be done simultaneously in both rooms.



120 sqm  
 Room height : 4,40m  
 Screens : 2  
 2X head tables: dimensions of each: 162 X 60cm, 80cm height of front panel  
 Lectern under request and quote

- Emergency exit
- Fire extinguisher
- Built-in floor box
- Video connection
- Projector
- Sound connection
- Telephone line
- Data/internet line (10Mb)
- TV/antenna line
- Power socket 1.2 Kw
- Internet Wifi available up to 50 users

AV equipment included in the room\*:

Welcome plasma screen: resolution 1280 X 1024px. Format: JPG or WMV (Windows Media Video 30fps).

Loud speakers, 1 retractable projector screen 600x340 cm, 2 projectors 16:10 6500 ansi, 2 table microphones, 2 lectern microphones, 1 lapel microphone, 1 handheld microphone, DVD player, 1 cameras (the events can be recorded using the cameras, although the quality of image is not in high definition (460 lines). You should bring writable DVDs if you want your event to be recorded).

\*Not included: technical service. Please contact our team for a quote.

\*\*Use of translation cabin: the connections are included in the room, but if you require to use the translation room, please contact our team for a quote of translation headphones.

### ROOM CAPACITY

Theatre 100	Classroom** 35	U shape 20	Boardroom 30	Banquet NO	Cocktail NO

\*\*Room furnished with tablet arm chairs.

The default layout of the room is theatre style. If you wish to have a different layout, please contact our team (for a quote).