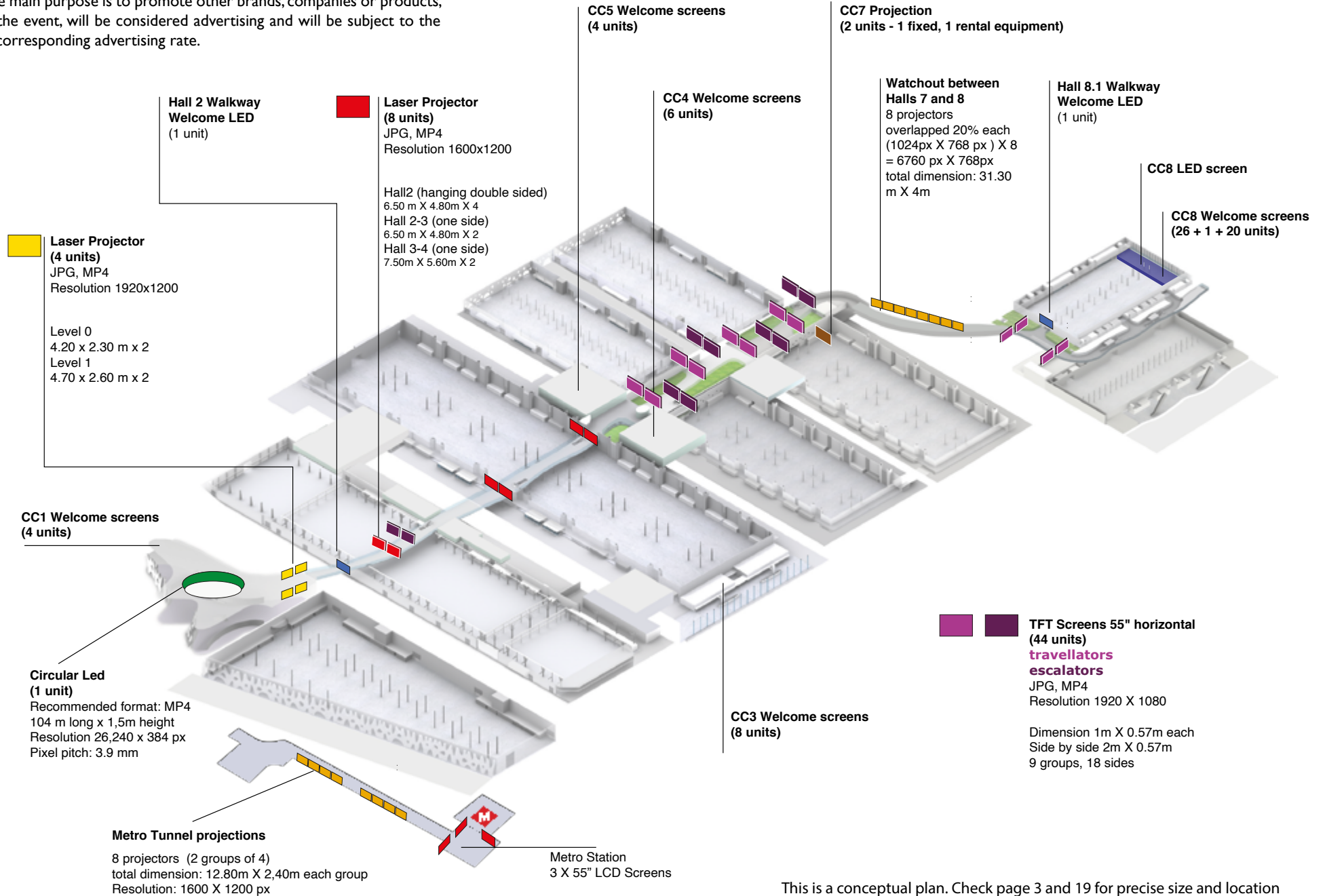


CATALOGUE DIGITAL SIGNAGE



DIGITAL SIGNAGE LOCATIONS GRAN VIA

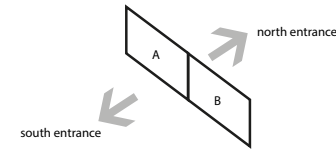
Note: Any static or dynamic graphic image, whether in structural support or freestanding, whose main purpose is to promote other brands, companies or products, related or not to the event, will be considered advertising and will be subject to the application of the corresponding advertising rate.



This is a conceptual plan. Check page 3 and 19 for precise size and location

DIGITAL SIGNAGE NAMING

Screens called south are facing south entrance
 A is for left side, B is for right side when screens are side by side



- level 0
- 203-GVHE_PROJECTOR_SOUTH_LEVEL_0
- 204-GVHE_PROJECTOR_NORTH_LEVEL_0
- level 1
- 201-GVHE_PROJECTOR_SOUTH_LEVEL_1
- 202-GVHE_PROJECTOR_NORTH_LEVEL_1

- 8 screens in total (2 groups of 4)
- 242-TFT SOUTH LEFT
- 242-TFT SOUTH RIGHT
- 243-TFT NORTH LEFT
- 243-TFT NORTH RIGHT
- 244-TFT SOUTH LEFT
- 244-TFT SOUTH RIGHT
- 245-TFT NORTH LEFT
- 245-TFT NORTH RIGHT

- 250-TFT UP LEFT
- 250-TFT UP RIGHT
- 251-TFT DOWN LEFT
- 251-TFT DOWN RIGHT

- 8 screens in total (2 groups of 4)
- 262-TFT SOUTH LEFT
- 262-TFT SOUTH RIGHT
- 263-TFT NORTH LEFT
- 263-TFT NORTH RIGHT
- 264-TFT SOUTH LEFT
- 264-TFT SOUTH RIGHT
- 265-TFT NORTH LEFT
- 265-TFT NORTH RIGHT

- 270-TFT UP LEFT
- 270-TFT UP RIGHT
- 270-TFT DOWN LEFT
- 270-TFT DOWN RIGHT

- 224-GVP2_TFTs_ESCALATOR UP LEFT
- 224-GVP2_TFTs_ESCALATOR UP RIGHT
- 225-GVP2_TFTs_ESCALATOR DOWN LEFT
- 225-GVP2_TFTs_ESCALATOR DOWN RIGHT

206-GVHE_H2_LED

200-GVHE_LED_CIRCULA

230-GVP3_PROJECTOR_NORTH_RIGHT
 231-GVP3_PROJECTOR_NORTH_LEFT

266.0-GVP6_WATCHOUT

305.0-GVP81

- 290 GVTM_PROJECTOR_CONVEYOR_A
- 291 GVTM_PROJECTOR_CONVEYOR_A
- 292 GVTM_PROJECTOR_CONVEYOR_A
- 293 GVTM_PROJECTOR_CONVEYOR_A
- 294 GVTM_PROJECTOR_CONVEYOR_B
- 295 GVTM_PROJECTOR_CONVEYOR_B
- 296 GVTM_PROJECTOR_CONVEYOR_B
- 297 GVTM_PROJECTOR_CONVEYOR_B

- 220-GVP2_PROJECTOR_SOUTH_LEFT
- 221-GVP2_PROJECTOR_SOUTH_RIGHT
- 222-GVP2_PROJECTOR_NORTH_RIGHT
- 223-GVP2_PROJECTOR_NORTH_LEFT

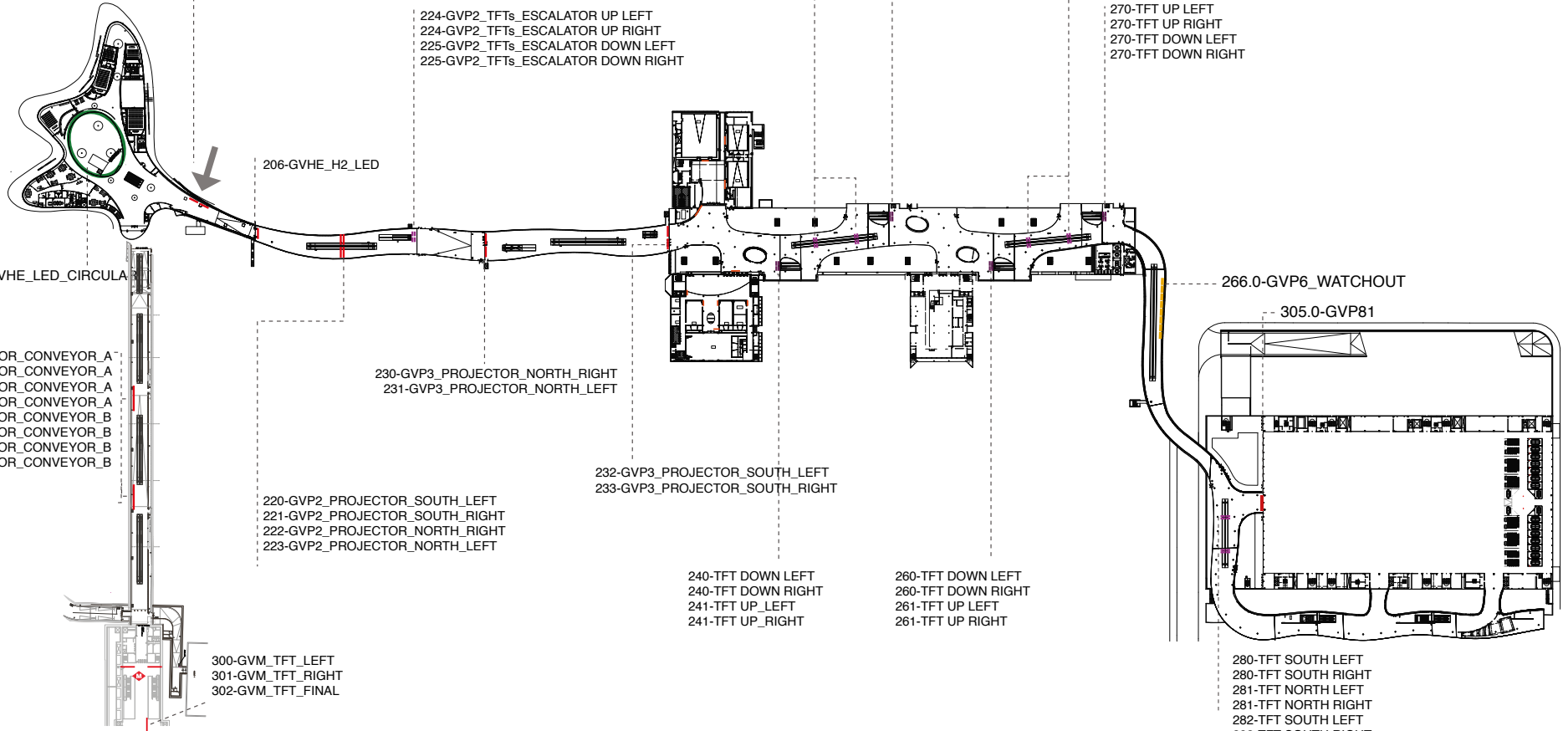
232-GVP3_PROJECTOR_SOUTH_LEFT
 233-GVP3_PROJECTOR_SOUTH_RIGHT

- 240-TFT DOWN LEFT
- 240-TFT DOWN RIGHT
- 241-TFT UP_LEFT
- 241-TFT UP_RIGHT

- 260-TFT DOWN LEFT
- 260-TFT DOWN RIGHT
- 261-TFT UP LEFT
- 261-TFT UP RIGHT

- 300-GVM_TFT_LEFT
- 301-GVM_TFT_RIGHT
- 302-GVM_TFT_FINAL

- 280-TFT SOUTH LEFT
- 280-TFT SOUTH RIGHT
- 281-TFT NORTH LEFT
- 281-TFT NORTH RIGHT
- 282-TFT SOUTH LEFT
- 282-TFT SOUTH RIGHT
- 283-TFT NORTH LEFT
- 283-TFT NORTH RIGHT



DIGITAL SIGNAGE SOFTWARE

Scala - Remotely managed digital displays

Real time communication



Multiscreen

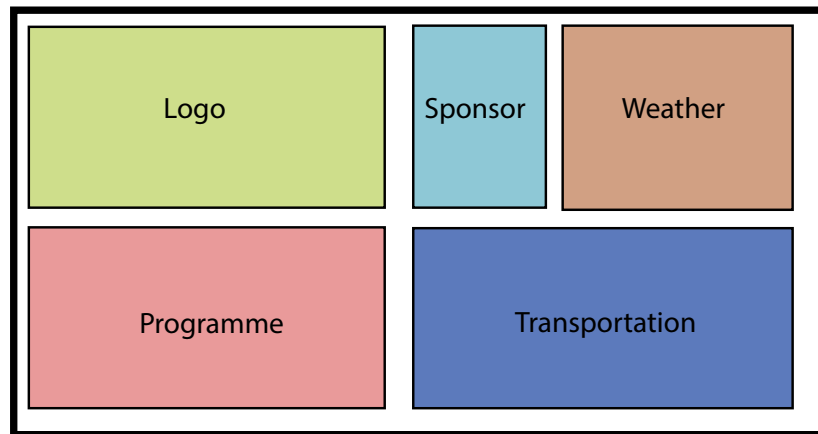
Multiscreen within a single screen with independent signals from sources such as images, videos or event webpages. We can work on the design of this multi-screen advising about the layout that meet your needs, the resolution of the screens and duration of the multiple signals.



Real time data

Addition of real time data into a frame of the multiscreen. For example, this allows to show simultaneously weather forecast, taxi ranks current lines and social media. Please contact us for further information.

Example



SOUTH ACCESS CIRCULAR LED



Circular Led (1 unit)

Accepted format: JPG (RGB) or MP4 (30 or 60 fps)

Sound available

Resolution 26240px x 384px

Pixel pitch: 3.9mm

Total pixels: 10.076.160 píxeles

Total resolution: 26240px x 384px

Dimensions: 104 m x 1.5 m

Max bitrate: 10.000

IMPORTANT

[Download guides, templates and tutorials here](#)

I X PC NEXCOM ALB385-S Chip: Intel Core i3-6100U Memory: 8 Gb DDR3L
Graphic: Intel Integrated HD 520

Always bear in mind that the LED is Circular, hence you need to prepare a loop file and think about the stitching. Make sure your content doesn't move fast and thin elements nor fonts are used.

200-GVHE_LED_CIRCULAR



Fira Barcelona

SOUTH ACCESS CIRCULAR LED

Total Resolution: 26240 X 384px

Use the template supplied by Fira in order to render separately two compositions (Left & Right), each one at 3840 X 2160. All files are located [here](#)

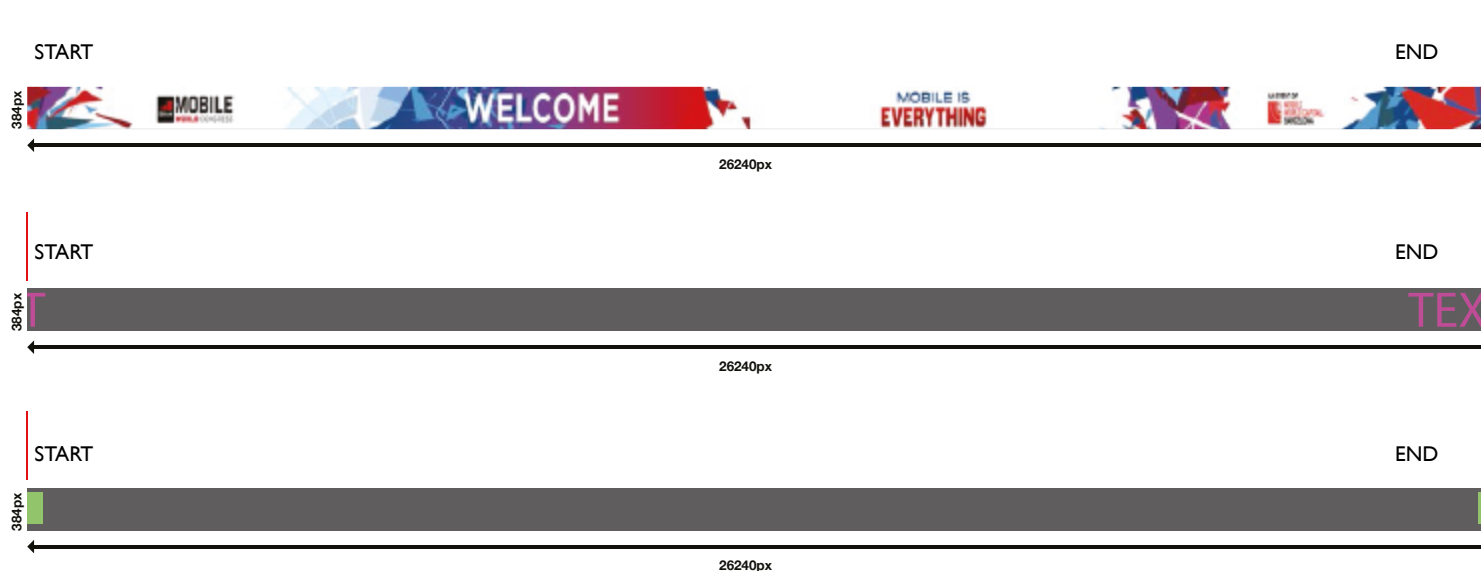
It is a loop, not a horizontal banner. “Start” meets “End” on the diagram below.

Try to make subtle and smooth animations. Few centimeters on a computer screen might mean several meters on-site. It all depends on what you want to achieve, but bear in mind that it might make visitors dizzy and confused.

Try working with graphics and assets that are not ultra thin. Though the resolution is very detailed, thin elements can be a source of problem.

Try not to exceed 45 seconds. Shorter videos are more effective in this device.

Use 30fps or 60fps for videos. Maximum bitrate 10.000



SOUTH ACCESS LEADING TO HALL 2 DOUBLE PROJECTION



Laser Projector (2 units) Level 0

Accepted format: JPG (RGB) or MP4 (30 or 60 fps). Sound available
Resolution 1920 x 1080
Screen Dimensions: (4.20 m x 2.30 m) x 2

Projectors Luminosity: 7000 lumens
Aspect Ratio: 16:10
2 PC NEXCOM ALB385 Chip: Intel Core i3-6100U Memory: 8 Gb DDR3L Graphic: Intel
Integrated HD 520
SOUND: Sound available

SOUTH ACCESS LEADING TO WALKWAY DOUBLE PROJECTION



Laser Projector (2 units) Level 1

Accepted format: JPG (RGB) or MP4 (30 or 60 fps). Sound available
Resolution 1920 x 1080 px
Screen Dimensions: (4.70 m x 2.60 m) x 2

Projectors Luminosity: 6000 lumens

Aspect Ratio: 16:10

2 PC NEXCOM ALB385 Chip: Intel Core i3-6100U Memory: 8 Gb DDR3L Graphic: Intel
Integrated HD 520

SOUTH ACCESS LEADING TO WALKWAY LED SCREEN



Hall 2 Walkway welcome LED Screen (1 unit)

Accepted format: JPG (RGB) or MP4 (30 or 60 fps). Sound available

Resolution 1920 x 384px

Screen Area Dimension 7,5 m x 1,5 m

Pixel pitch 3,9mm

SMD 2121 Black Body LED

LED Absen

1 PC NEXCOM ALB385 Chip: Intel Core i3-6100U Memory: 8 Gb DDR3L Graphic: Intel Integrated HD 520



METRO TUNNEL WALL PROJECTION SCREENS



8 PROJECTORS (2 GROUPS OF 4)

Accepted format: JPG (RGB) or MP4 (30 or 60 fps). Sound available

Resolution 1600 x 1200px (X 8)

Total dimension: 12.80 m X 2.40 m each group

(each projection 3.20 m x 2.40 m), no blending nor synch available.

One sound source per group

Projectors: 6.000 lumens

8 PC NEXCOM ALB385 Chip: Intel Core i3-6100U Ram : 8Gb Graphic: Intel Integrated

HD 520

METRO STATION WALL LED SCREENS



METRO STATION WELCOME SCREENS

Accepted format: JPG (RGB) or MP4 (30 or 60 fps). Sound available
3 LED Plasma Screens (55")
Resolution 1920 px X 1080 px
Dimension: 1.23 m X 0.71 m

Contrast: 5.000 :1
3 PCs
Graphics: Intel HD Graphics 4000
Chip: Intel Core i5 3427U CPU 1,80Ghz RAM: 4 GB

HALL 2 HANGING PROJECTION SCREENS



HALL 2 PROJECTION SCREENS

(centered- double sided)

Accepted format: JPG (RGB) or MP4 (30 or 60 fps). Sound available

Resolution 1920 X 1080px each screen

ScreenDimensions: (4.90 m x 3.60 m) x 4

Total Dimension: (9.80 m x 3.60 m) x 2 sides

No blending nor synch available.

Projectors Luminosity: 9000 lumens OPTOMA DZ9000

4 PC NEXCOM ALB385 Chip: Intel Core i3-6100U Memory: 8 Gb DDR3L Graphic: Intel Integrated HD 520

HALL 2 HANGING PROJECTION SCREENS



HALL 2 PROJECTION SCREENS

(centered- double sided)

Accepted format: JPG (RGB) or MP4 (30 or 60 fps). Sound available

Resolution 1600 x 1200 px

ScreenDimensions: (4.90 m x 3.60 m) x 4

Total Dimension: (9.80 m x 3.60 m) x 2 groups

Projectors Luminosity: 9000 lumens OPTOMA DZ9000

AspectRatio: 4:3

4 PC NEXCOM ALB385 Chip: Intel Core i3-6100U Memory: 8 Gb DDR3L Graphic: Intel Integrated HD 520



Fira Barcelona

HALL 3 HANGING PROJECTION SCREENS



HALL 3 PROJECTION SCREENS

(against wall - single sided)

Accepted format: JPG (RGB) or MP4 (30 or 60 fps). Sound available

Resolution 1600 x 1200 px

ScreenDimensions: (4.90 m x 3.60 m) x 4

Total Dimension: (9.80 m x 3.60 m)x 2 groups

Projectors Luminosity: 9000 lumens OPTOMA DZ9000

AspectRatio: 4:3

4 PC NEXCOM ALB385 Chip: Intel Core i3-6100U Memory: 8 Gb DDR3L Graphic: Intel

Integrated HD 520

ESCALATORS AND TRAVELLATORS LED SCREENS

ibtm WORLD
BARCELONA, SPAIN
28-30 NOVEMBER 2017

ibtm WORLD
BARCELONA, SPAIN
28-30 NOVEMBER 2017

TFT SCREENS 55" HORIZONTAL (44 UNITS)

Accepted format: JPG (RGB) or MP4 (sound available, from one source recommended)

Resolution 1920 X 1080 px

Dimension 1.209 m X 0.681 m each

Side by side 2.418 m X 0.681 m (11 groups, 22 sides)

AspectRatio: 16:9

LG 55SE3KB-B.AEU

2 PC NEXCOM ALB385 Chip: Intel Core i3-6100U Memory: 8 Gb DDR3L Graphic: Intel Integrated HD 520

To prevent overlapping, it is recommended that only one of the projections is the source for the audio.

HALLS 6/7 TOWARDS HALL 8 WATCHOUT



WATCHOUT MULTIDISPLAY

Accepted format: JPG (RGB) or MP4 (30 or 60 fps). Sound available

8 projectors overlapped 20% each (1024px X 768 px) X 8

Total 6760 px X 768 px

Format: JPG (RGB) MP4 for VIDEO

Total dimension: 31.30 m X 4 m

Sequential or Random order

Briefing required for any animation or effect

Projectors: OPTOMA ZU650 6.000 lumens

Dell Precision Tower 3620

GraphicCard: PNY NVIDIA NVS 810

Chip: Intel Xeon CPUE3 3,5Gb

RAM: 8Gb

The content creation is via SCALA DESIGNER software.

IMPORTANT

[Download guides, templates and tutorials here](#)

MP4 files (max 4096 x 464) need to be rescaled using our equipment to reach the watchout resolution of 6760 x 768. As we do not recommend rescaling:

Option 1: Send us a video split into 2 parts (Part A & Part B - each one of 3380 x 768), it will be stitched together using our equipment.

Option 2: One MP4 video of 4096 x 464 px and we will rescale it.

If you change the FPS of any comp, please remember to apply it to all 3 compositions.

For JPG images send us 6760 x 768 still pictures.



Fira Barcelona

HALLS 6/7 TOWARDS HALL 8 WATCHOUT

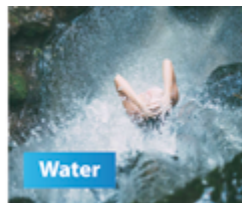
Use the After effects template supplied by Fira.

The template is designed so you can render a 6760 x 768 composition divided into two separate videos (Part A & Part B).

That means that you send us two MP4 videos each one of 3380 x 768.

In our content manager software we “stich” both videos to create a single one with 6760 x 768.

As currently MP4 videos can not be created at a resolution beyond 4096 px, we use the template to break videos in two, then stitching them together via software management. For images the template is not necessary. Images can be 6760 x 768 px.



Hall 8.I LED SCREEN

You make possible

LED SCREEN (1 unit)

Accepted format: JPG (RGB) or MP4 (no sound available)
Resolution 2352 x 336 px

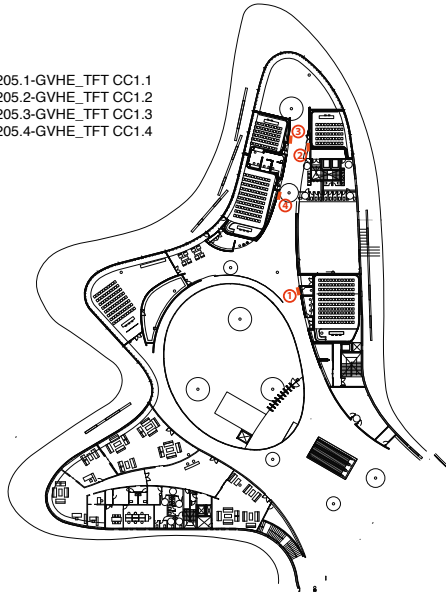
CONFERENCE CENTERS NAMING

In all Conference Centers you can use templates for creating content faster and adapted to the size and resolution of these screens.

Please contact us to get a link to the template.

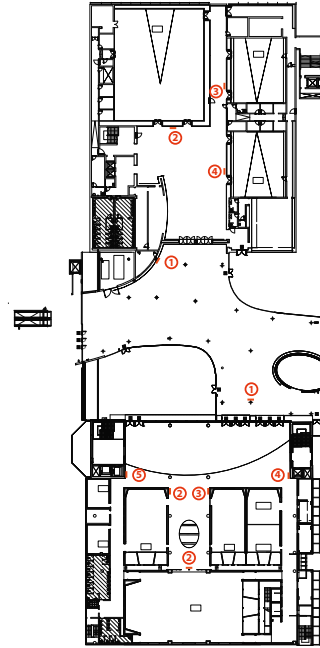
CC1

- ① 205.1-GVHE_TFT CC1.1
- ② 205.2-GVHE_TFT CC1.2
- ③ 205.3-GVHE_TFT CC1.3
- ④ 205.4-GVHE_TFT CC1.4



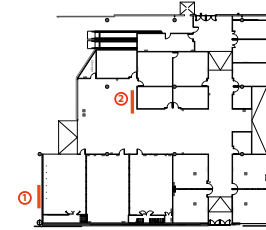
CC5

- ① 252-GVP5_TFT_ENTRANCE_CC5
- ② 252.1_GVP5_TFT_CC5.1
- ③ 252.2_GVP5_TFT_CC5.2
- ④ 252.3_GVP5_TFT_CC5.3



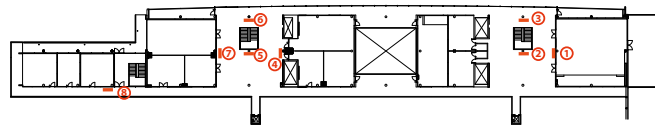
CC7

- ① 272-GVP7_PROYECTOR_CC7 (Projector Rental)
- ② 273-GVP7_TFT_ENTRADA_CC7



CC4

- ① 246-GVP4_TFT_ENTRANCE_CC4
- ② 246.1_GVP4_TFT_CC4.1
- ③ 246.2_GVP4_TFT_CC4.2
- ④ 246.3_GVP4_TFT_CC4.3
- ⑤ 246.4_GVP4_TFT_CC4.4
- ⑥ 246.5-6_GVP4_TFT_CC4.5-6



CC3

- ① 234.1-GVP3_TFT_CC3.11
- ② 234.2-GVP3_TFT_CC3_HALL_11
- ③ 234.3-GVP3_TFT_SUBIDA_CC3.11
- ④ 234.4-GVP3_TFT_CC3.13
- ⑤ 234.5-GVP3_TFT_HALL_13/14
- ⑥ 234.6-GVP3_TFT_SUBIDA_13/14
- ⑦ 234.7-GVP3_TFT_CC3.14
- ⑧ 234.8-GVP3_TFT_CC3.15/16/17

CC8

- ① 284.01-GVP8_LED_WELCOME_CC8
- ② 284.02-GVP8_TFT_CC8.ACCESS



- 284.03-GVP8_TFT_CC8.1
- 284.04-GVP8_TFT_CC8.2
- 284.05-GVP8_TFT_CC8.4
- 284.06-GVP8_TFT_CC8.6
- 284.07-GVP8_TFT_CC8.7
- 284.08-GVP8_TFT_CC8.8
- 284.09-GVP8_TFT_CC8.9
- 284.10-GVP8_TFT_CC8.10
- 284.11-GVP8_TFT_CC8.11
- 284.12-GVP8_TFT_CC8.12
- 284.13-GVP8_TFT_CC8.13
- 284.14-GVP8_TFT_CC8.14
- 284.15-GVP8_TFT_CC8.15
- 284.16-GVP8_TFT_CC8.16
- 284.17-GVP8_TFT_CC8.17
- 284.18-GVP8_TFT_CC8.18
- 284.19-GVP8_TFT_CC8.19
- 284.20-GVP8_TFT_CC8.20
- 284.21-GVP8_TFT_CC8.21
- 284.22-GVP8_TFT_CC8.22
- 284.23-GVP8_TFT_CC8.23
- 284.24-GVP8_TFT_CC8.24
- 284.25-GVP8_TFT_CC8.25
- 284.26-GVP8_TFT_CC8.26
- 284.27-GVP8_TFT_CC8.27
- 284.28-GVP8_TFT_CC8.28
- 284.29-GVP8_TFT_CC8.29
- 284.30-GVP8_TFT_CC8.30
- 284.31-GVP8_TFT_CC8.31
- 284.32-GVP8_TFT_CC8.32
- 284.33-GVP8_TFT_CC8.33
- 284.34-GVP8_TFT_CC8.34
- 284.35-GVP8_TFT_CC8.35
- 284.36-GVP8_TFT_CC8.36
- 284.37-GVP8_TFT_CC8.37
- 284.38-GVP8_TFT_CC8.38
- 284.39-GVP8_TFT_CC8.39
- 284.40-GVP8_TFT_CC8.40
- 284.41-GVP8_TFT_CC8.41
- 284.42-GVP8_TFT_CC8.42
- 284.43-GVP8_TFT_CC8.43
- 284.44-GVP8_TFT_CC8.44
- 284.45-GVP8_TFT_CC8.45

CCI ROOM ENTRANCES



CCI ROOMS WELCOME SCREENS

(4 units, rooms 1.1, 1.2, 1.3 and 1.4)

Accepted format: JPG (RGB) or MP4 (30 or 60 fps). Sound available
1920 X 1080 px

Screen dimensions: 23,6"

AspectRatio: 16:9

Operating System: Windows Embedded 64 bits

PC Nexcom ALB385

Chip: Intel Core i3-6100u

Graphic: Intel Integrated HD520

Ram: 8Gb



Fira Barcelona

CC3 ROOM ENTRANCES AND COMMON AREAS

CC3 ROOMS WELCOME SCREENS (8 UNITS)

4 X 40" screens on columns common areas
3 X 32" in front of rooms 3.11, 3.13 and 3.14
1 X 23" before rooms 3.15 to 3.17

Accepted format: JPG (RGB) or MP4 (30 or 60 fps). Sound available

Resolution: 1920 X 1080 px

AspectRatio: 16:9

Operating System: Windows Embedded 64 bits

PC Nexcom ALB385

Chip: Intel Core i3-6100u

Graphic: Intel Integrated HD520

Ram: 8Gb



Fira Barcelona

CC4 ENTRANCE

CC4
Centre de Convencions
Catalan Convention & Exhibition Center

SPEAKER CENTRE

SPEAKER CENTRE OPENING HOURS	
Friday, 27 September	09:00 - 18:00
Saturday, 28 September	07:00 - 18:00
Sunday, 29 September	07:00 - 18:00
Monday, 30 September	07:00 - 18:00
Tuesday, 1 October	08:00 - 12:00

CC4 WELCOME SCREENS (1 UNIT)

1 X 40" screen on column common areas
Accepted format: JPG (RGB) or MP4 (30 or 60 fps). Sound available

1920 X 1080 px

AspectRatio: 16:9
Operating System: Windows Embedded 64 bits
PC Nexcom ALB385
Chip: Intel Core i3-6100u
Graphic: Intel Integrated HD520
Ram: 8Gb



Fira Barcelona

CC4 ROOM ENTRANCES



CC4 ROOMS WELCOME SCREENS (5 UNITS)

1 X 32" in front of room 4.1
4 X 23" in front of rooms 4.2, 4.3 and aisle leading to rooms 4.5 and 4.6, and aisle leading to room 4.4.
Accepted format: JPG (RGB) or MP4 (30 or 60 fps). Sound available

1920 X 1080 px

AspectRatio: 16:9
Operating System: Windows Embedded 64 bits
PC Nexcom ALB385
Chip: Intel Core i3-6100u
Graphic: Intel Integrated HD520
Ram: 8Gb



Fira Barcelona

CC5 ENTRANCE



CC5 WELCOME SCREENS (1 UNITS)

1 X 40" screen on column common areas
Accepted format: JPG (RGB) or MP4 (30 or 60 fps). Sound available
Resolution: 1920 X 1080 px

AspectRatio: 16:9
Operating System: Windows Embedded 64 bits
PC Nexcom ALB385
Chip: Intel Core i3-6100u
Graphic: Intel Integrated HD520
Ram: 8Gb



CC5 ROOM ENTRANCES



CC5 ROOMS WELCOME SCREENS (3 UNITS)

3 X 32" in front of rooms 5.1, 5.2 and 5.3
Accepted format: JPG (RGB) or MP4 (30 or 60 fps). Sound available
Resolution: 1920 X 1080 px

AspectRatio: 16:9
Operating System: Windows Embedded 64 bits
PC Nexcom ALB385
Chip: Intel Core i3-6100u
Graphic: Intel Integrated HD520
Ram: 8Gb



Fira Barcelona

CC7 PROJECTOR - RENTAL EQUIPMENT



CC7 PROJECTION RENTAL EQUIPMENT

Accepted format: JPG (RGB) or MP4 (30 or 60 fps). Sound not available

Projection dimensions might vary depending on the optics of each projector.

Projection dimension recommended: 5.30 m x 3m

Fixed distance from projector: 15.30m

Total dimensions of wall: 9.30m X 4.90m

PC Nexcom ALB385

Chip: Intel Core i3-6100u

Graphic: INtel Integrated HD520

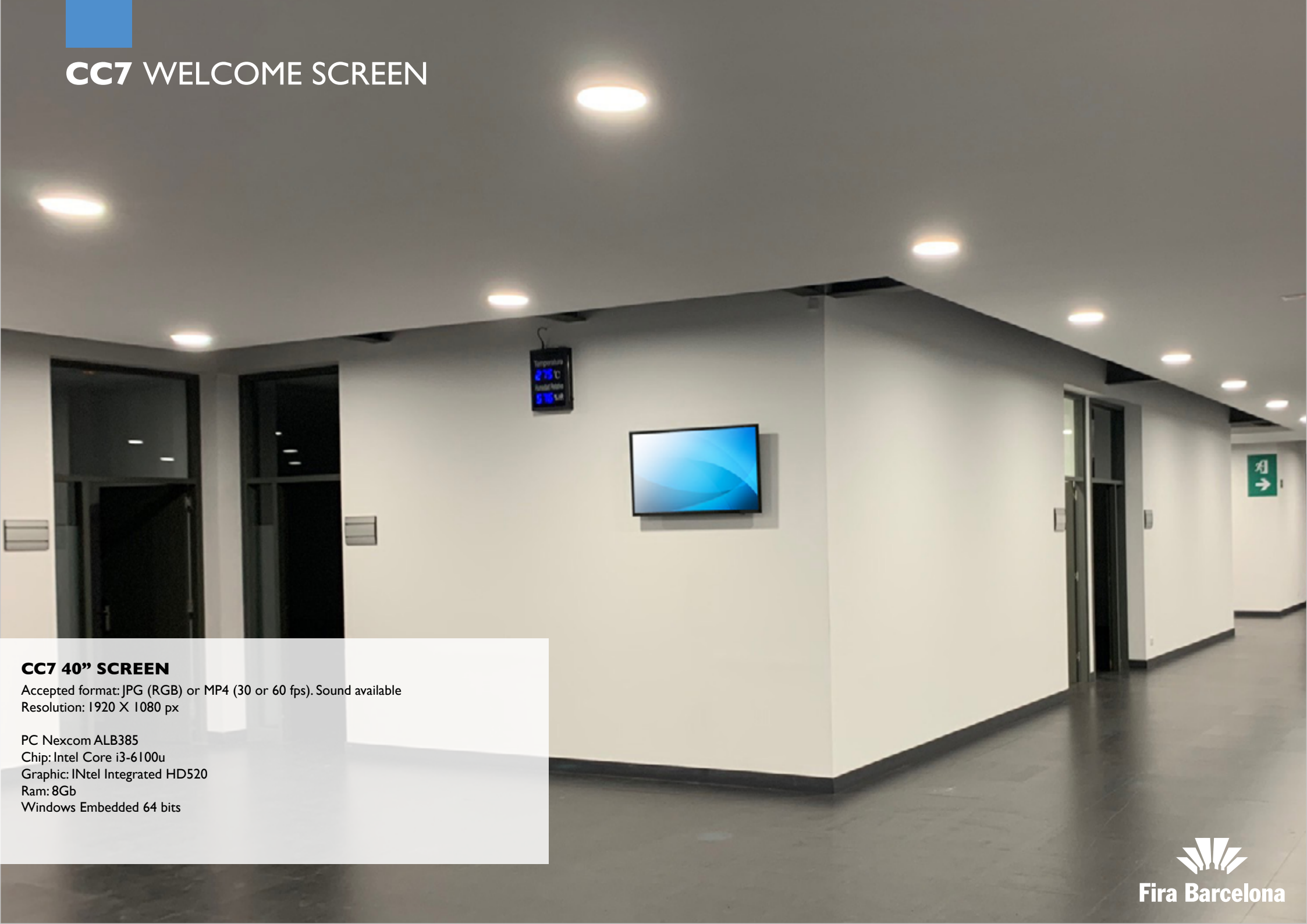
Ram: 8Gb

Windows Embedded 64 bits



Fira Barcelona

CC7 WELCOME SCREEN



CC7 40" SCREEN

Accepted format: JPG (RGB) or MP4 (30 or 60 fps). Sound available
Resolution: 1920 X 1080 px

PC Nexcom ALB385
Chip: Intel Core i3-6100u
Graphic: INtel Integrated HD520
Ram: 8Gb
Windows Embedded 64 bits

CC8 WELCOME SCREENS



CC8 WELCOME SCREENS

(23 units 23,6" +1 60" at entrance)

Accepted format: JPG (RGB) or MP4 (30 or 60 fps). Sound available

Resolution: 1920 X 1080 px

AspectRatio: 16:9

Operating System: Windows Embedded 64 bits

Processor: Intel Celeron Dual CPU 847 1.10 GHz

Graphic Card: Intel HD Graphics

RAM Memory: 2GB



Fira Barcelona

FREE STANDING TOTEMS LED SCREENS



TOTEMS 46" (6 units)

Accepted format: JPG (RGB) or MP4 (30 or 60 fps). Sound available.
Resolution 768 X 1366 px, ratio 16:9
Screen dimension 0.57m X 1 m
Totem dimension 2.19 m X 0.90 m X 0.89 m
8 PC NEXCOM ALB385 Chip: Intel Core i3-6100U Memory: 4 Gb DDR3L Graphic: Intel Integrated HD 520

If movies are delivered in their final format, please take into account that all the files must be to 30fps.

The totems are meant to be installed along the walkway and south access. Exact location of totems depends on availability of sockets and network connections in the area. Please contact our team to find a solution that suits you.