



**Fira Barcelona**

**UNIQUE VENUES**



## UNIQUE VENUES IN A UNIQUE CITY

The vibrant and friendly city of Barcelona is ready to extend a warm welcome to unforgettable corporate events and its attendees.

Fira Barcelona offers countless locations to host amazing events. Fira Montjuïc, is a centrally and privileged located venue built in the beginning of the 20th Century, surrounded by icons of Barcelona, such as the Magic Fountain, the National Palace, the Mies van der Rohe Pavilion and Las Arenas.

Opposed to the industrial style venues, Fira Gran Via, a project by the architect Toyo Ito, 2013 Pritzker Prize, offers the avant-garde design combining a spectacular appearance with respect for the environment. An endless number of venues to hold amazing product launches, gala dinners, catwalks, conventions...

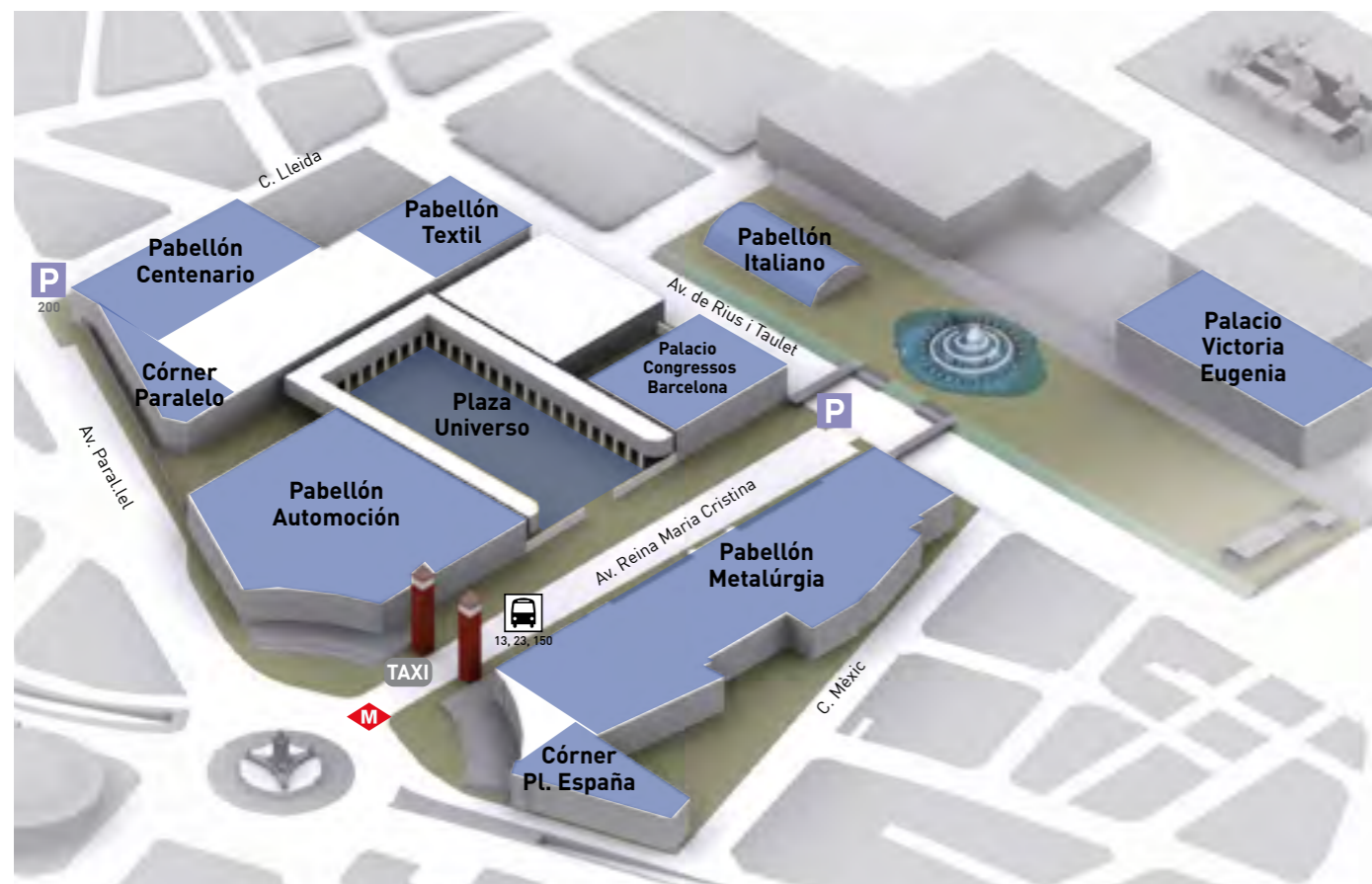
The know-how and the passion to deliver a brilliant event to all extents will make a mark on your event hosted in Barcelona.

Barcelona is not only positioned as one of the top cities worldwide in terms of hosting international events, but it has become the first city in the world to be awarded Biosphere Certification, providing a guarantee that the city manages tourism responsibly and sustainably.

We really look forward to being honoured to host your event and to having the privilege to contribute to a sublime and transcendent experience!

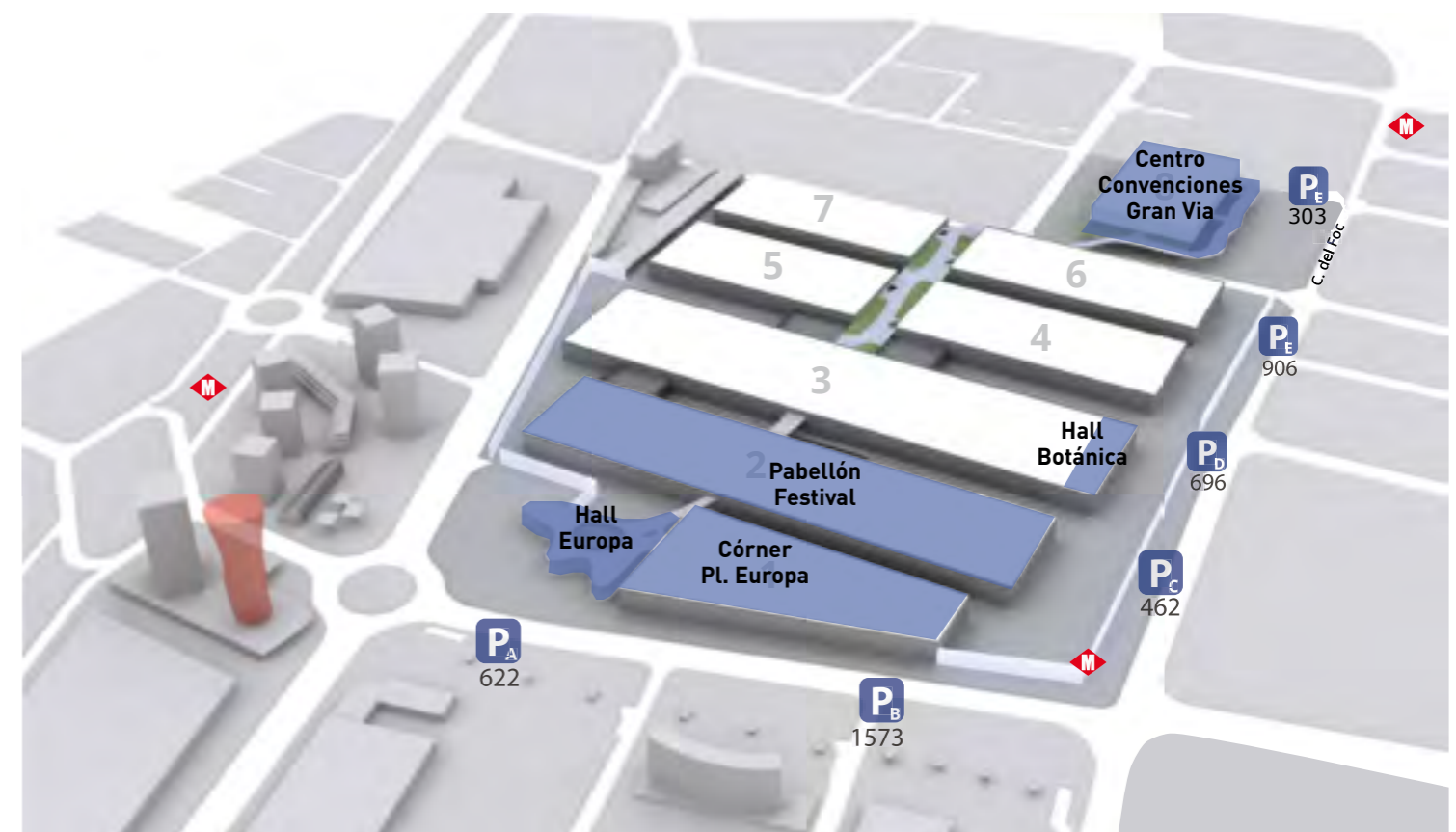
# FIRA MONTJUÏC

VENUE	m <sup>2</sup>	capacity
Pabellón Italiano	2,400	2,120
Palacio Victoria Eugenia	6,330	2,590
Córner Pl. España	5,000	1,120
Pabellón Centenario	6,900	8,352
Pabellón Textil	2,800	2,250
Córner Paralelo	1,600	1,500
Pabellón Automoci3n	14,000	5,400
Pabell3n Metalurgia	19,000	4,700
Plaza Universo	12,500	9,000
Palacio Congresos Barcelona	5,500	1,609



# FIRA GRAN VIA

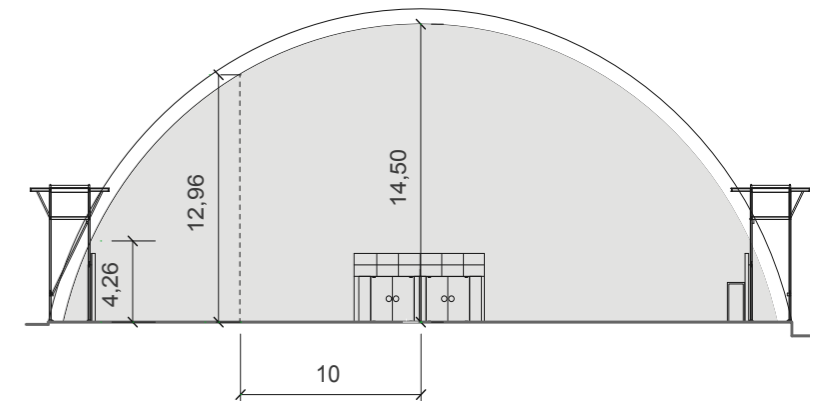
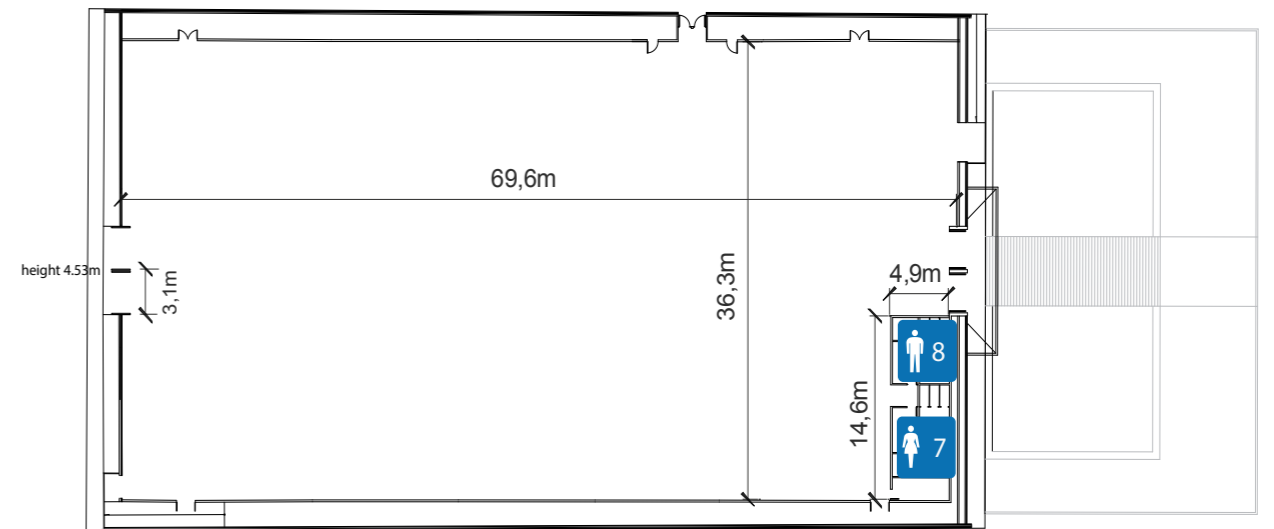
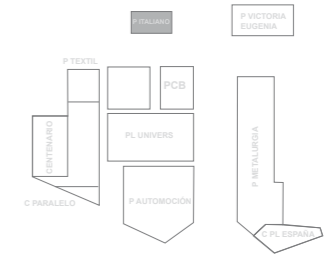
VENUE	m <sup>2</sup>	capacity
Hall Europa	1,950	1,000
Hall Bot3nica	2,800	2,500
Pabell3n Festival	30,000	23,500
C3rner Pl. Europa	14,000	9,160
Centro Convenciones Gran Via	24,500	5,000





# PABELLÓN ITALIANO

Gross Surface	2,400 m <sup>2</sup>
Ground Resistance	5,000 kg/m <sup>2</sup>
Capacity	2,120 pax

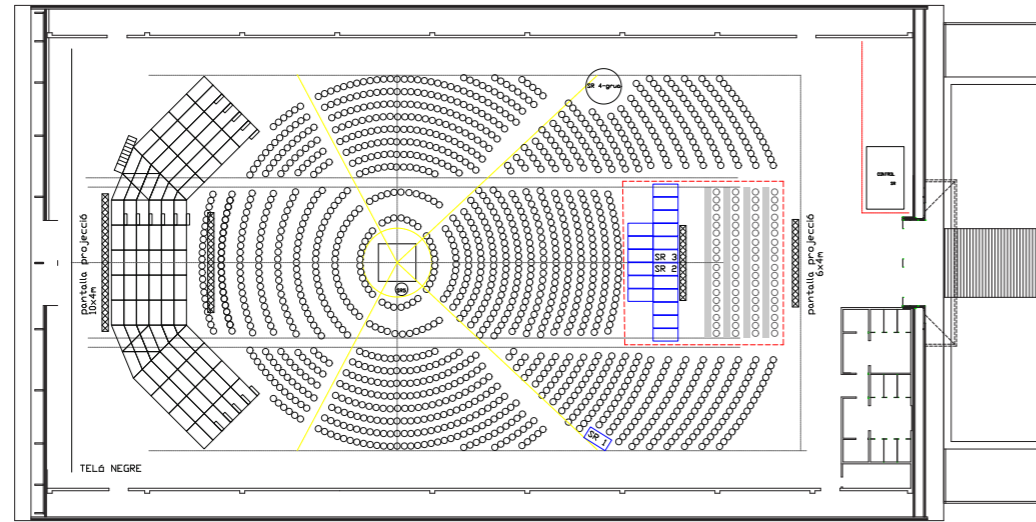


# PABELLÓN ITALIANO

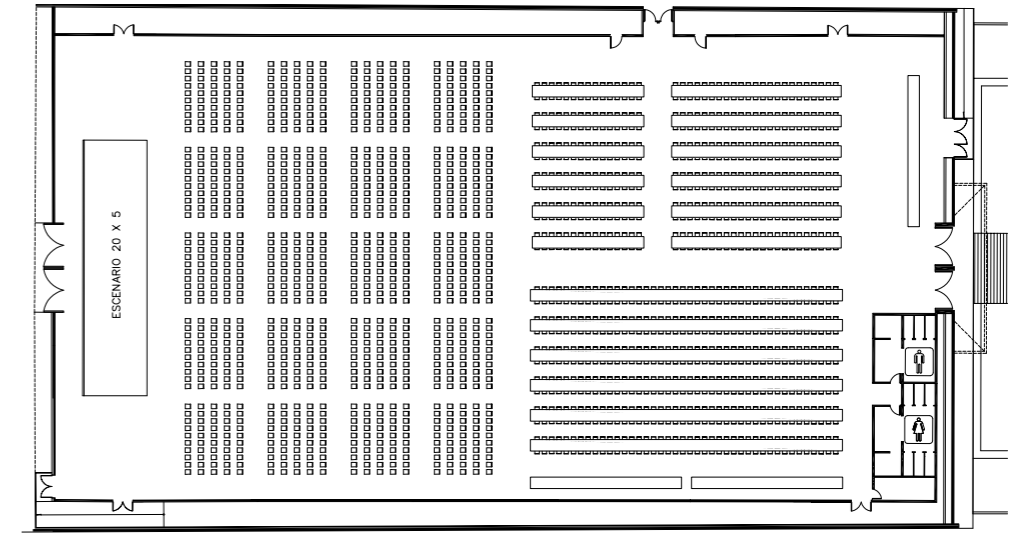


# LAYOUT EXAMPLES

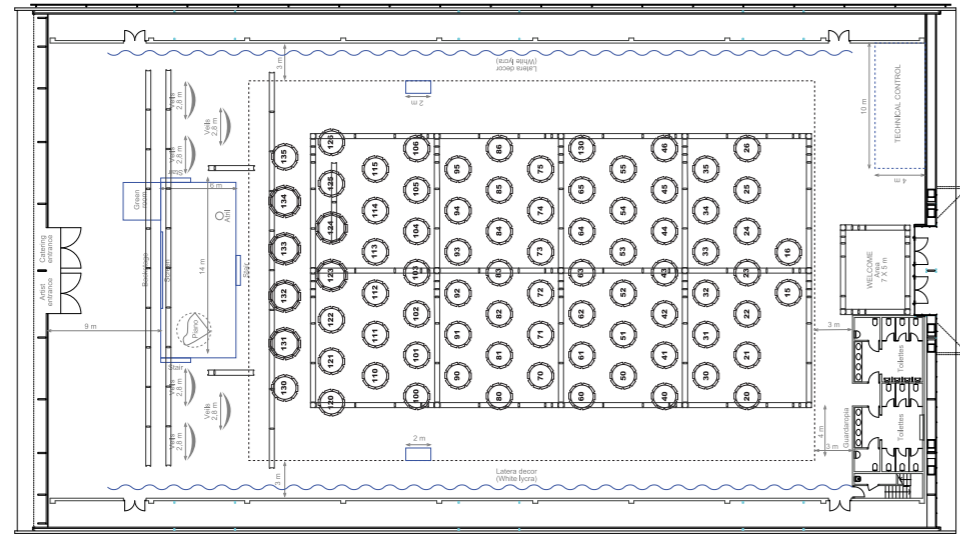
1,200 pax



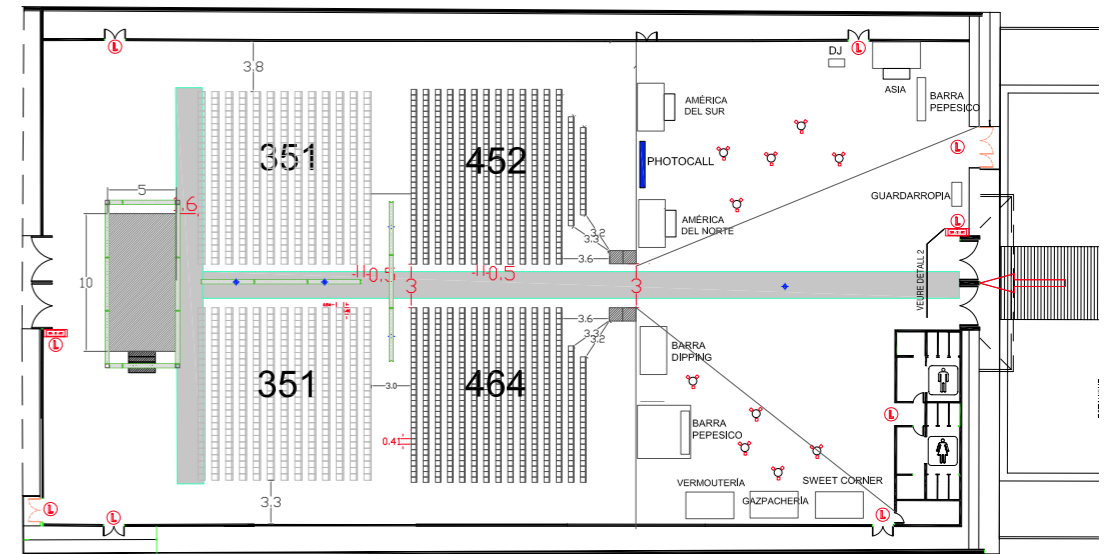
900 pax



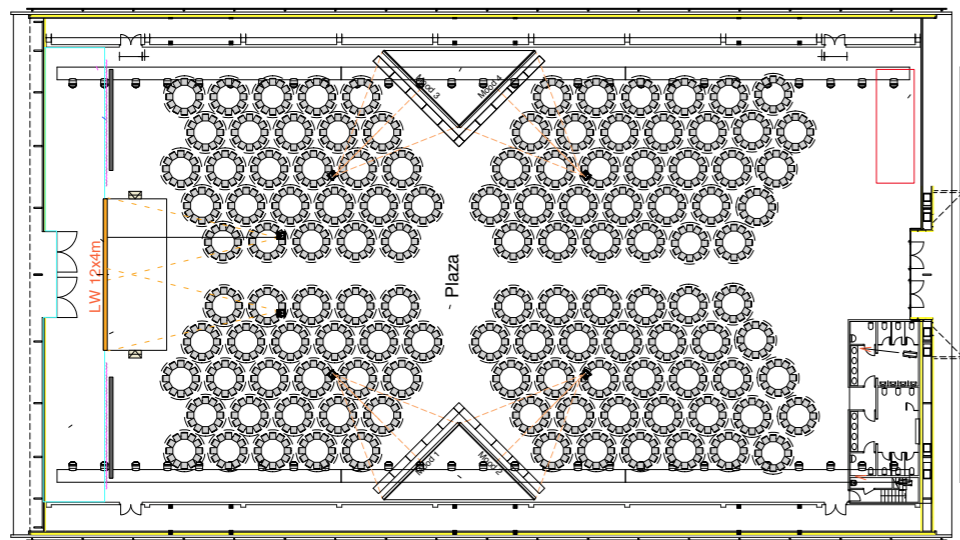
800 pax



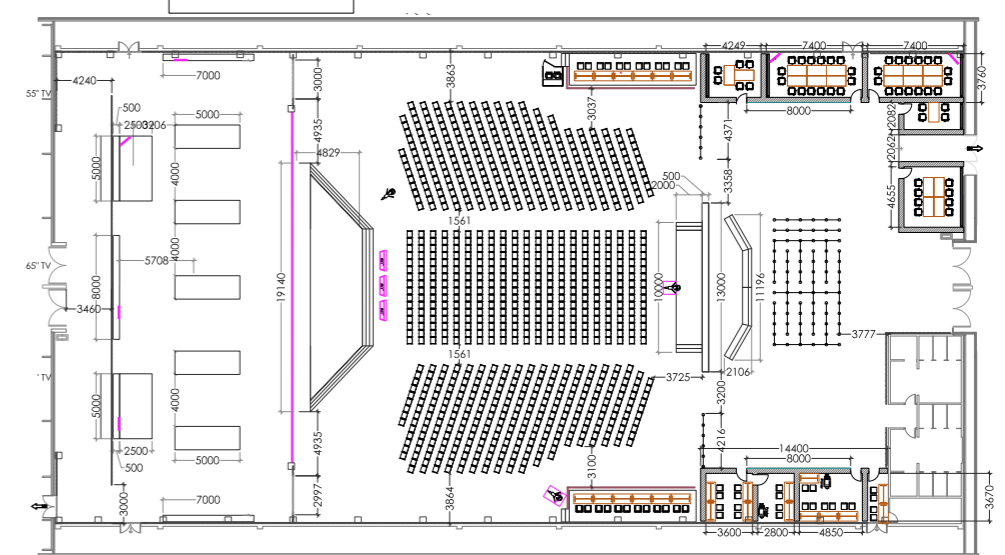
1,600 pax



1,450 pax



1,000 pax

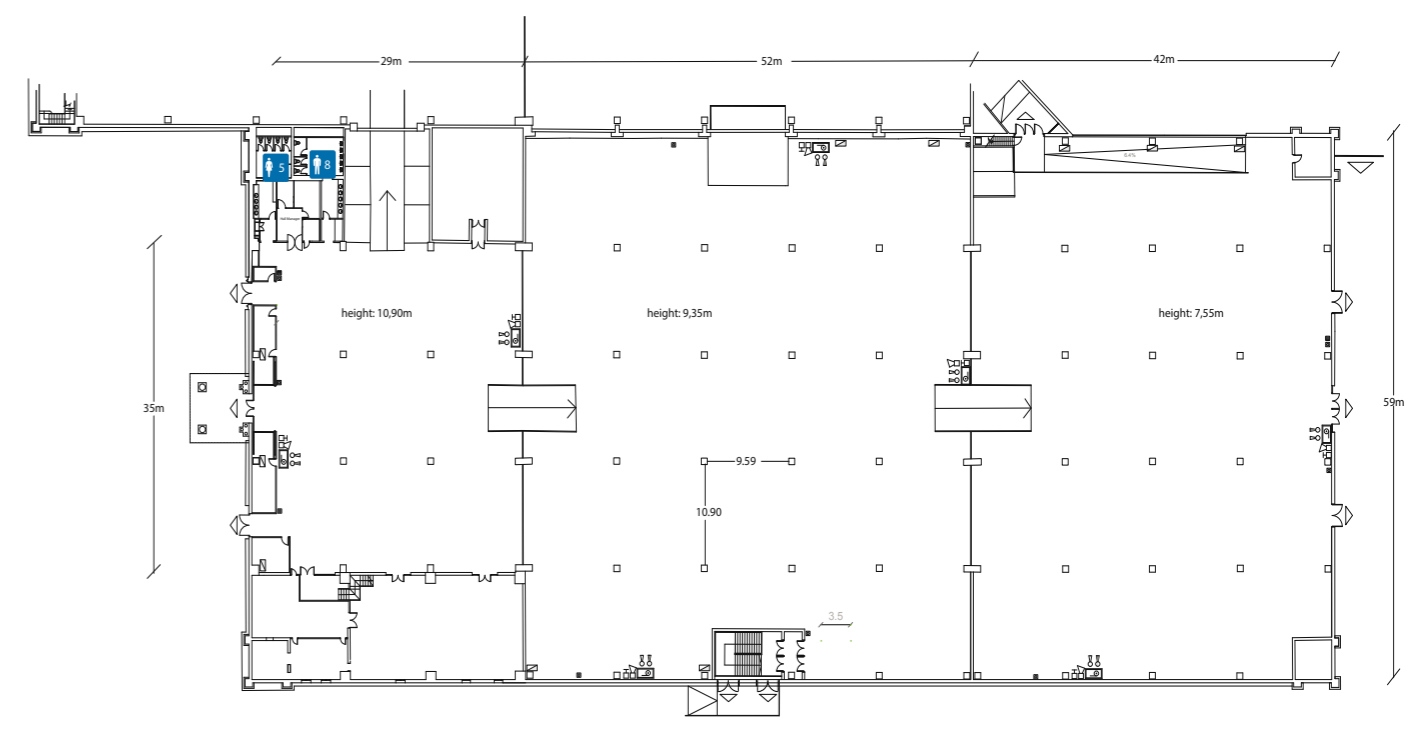
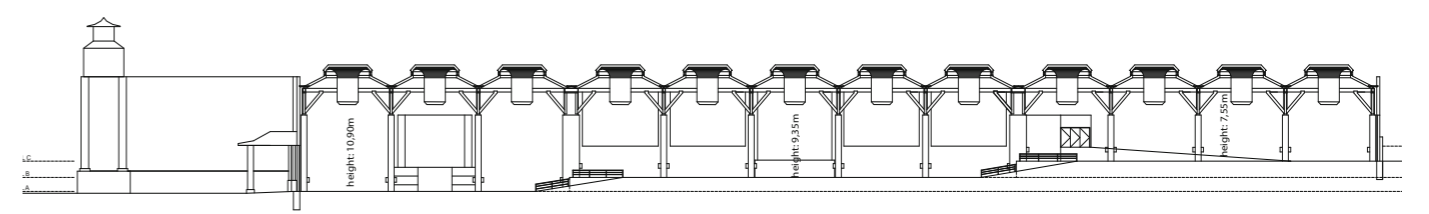
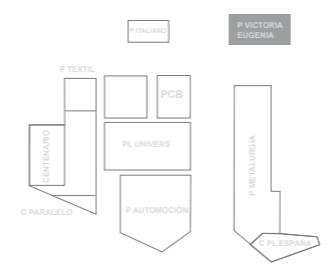


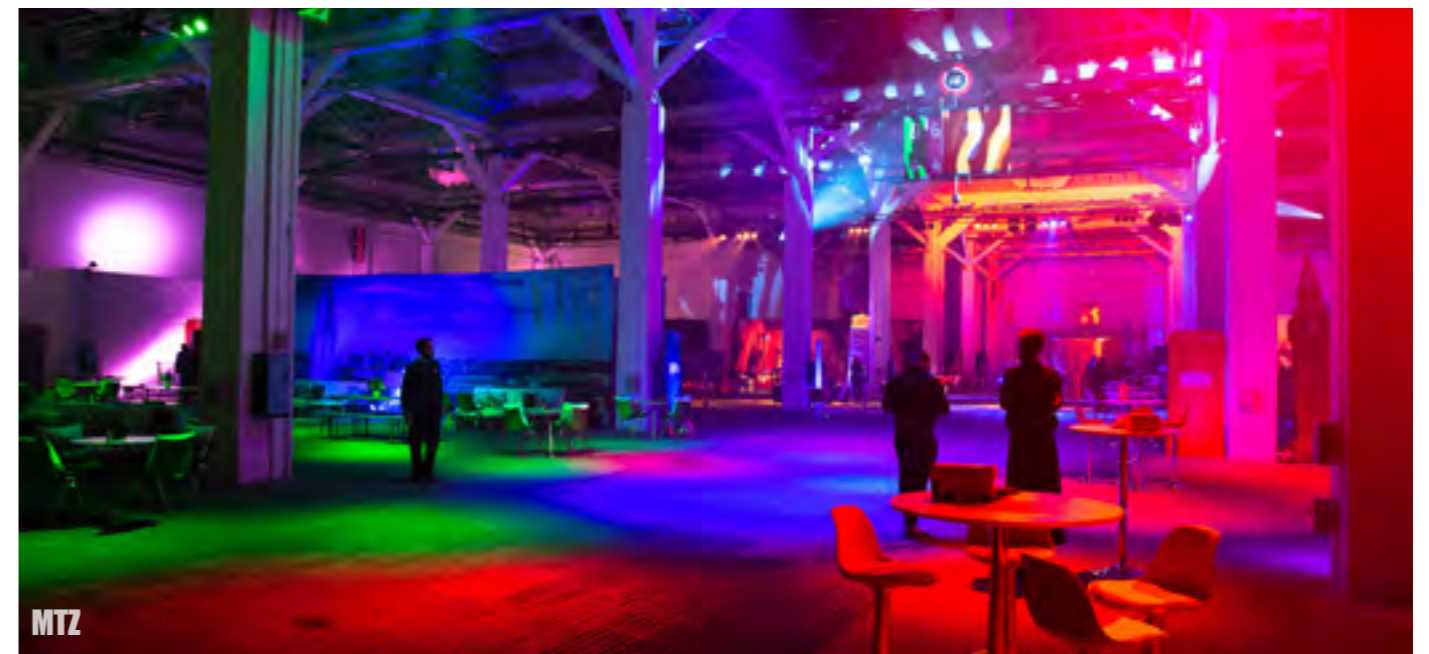


# PALACIO VICTORIA EUGENIA

## PALACIO VICTORIA EUGENIA

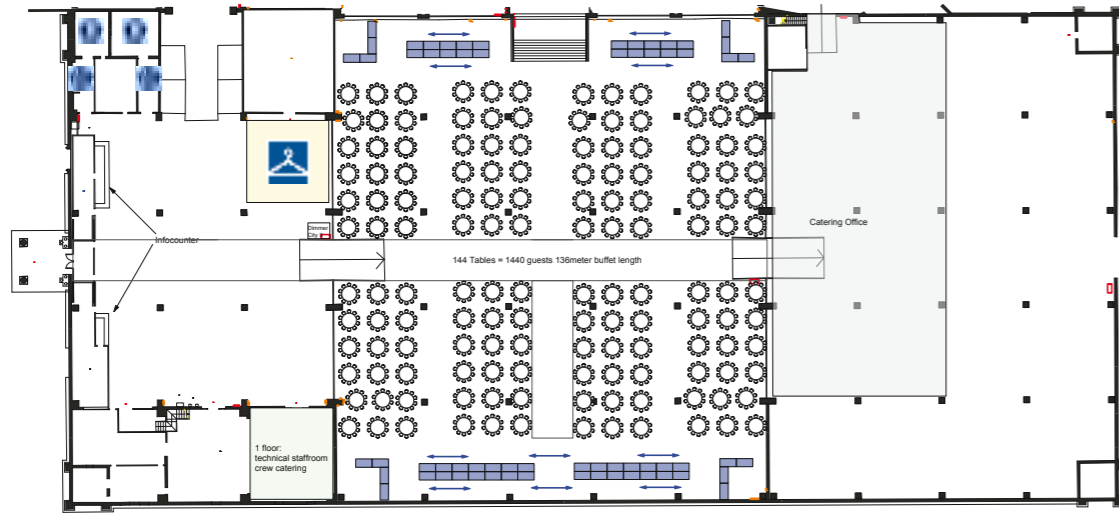
<b>Gross Surface</b>	6,330 m <sup>2</sup>
<b>Ground Resistance</b>	3,000 kg/m <sup>2</sup>
<b>Capacity</b>	2,590 pax



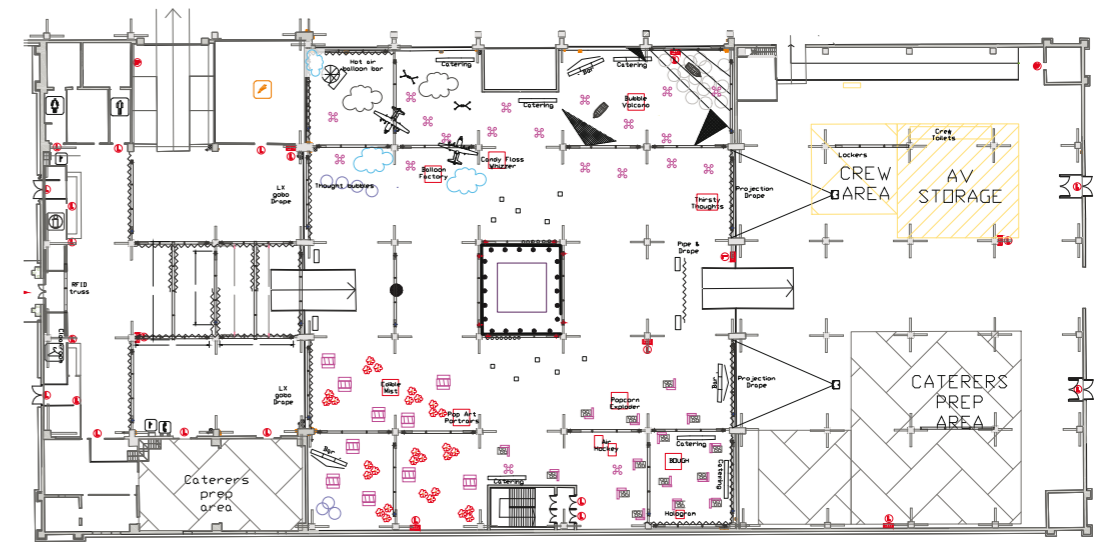


# LAYOUT EXAMPLES

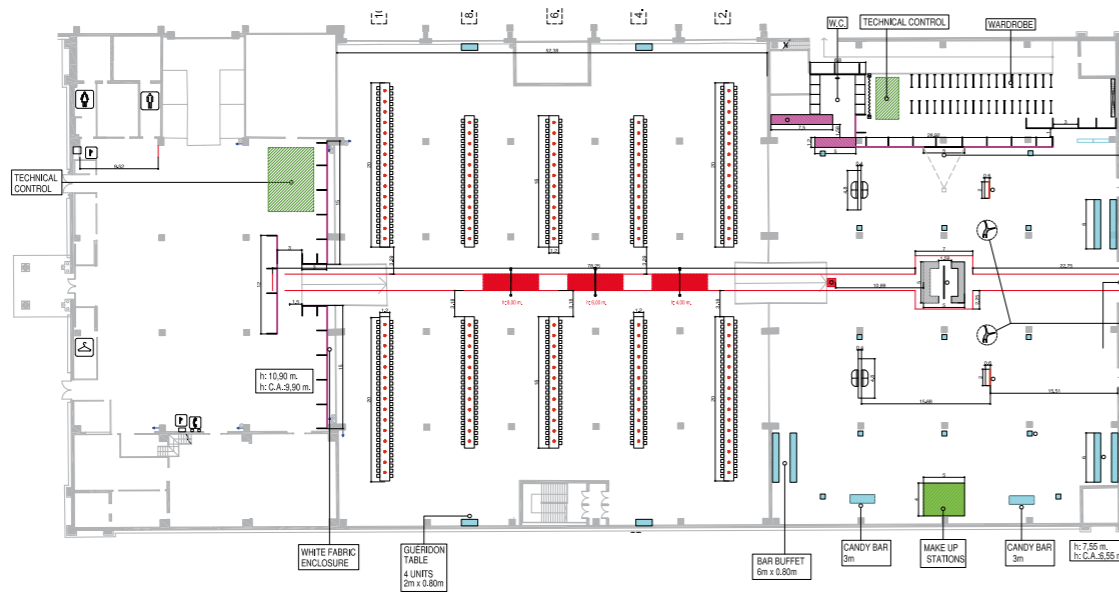
1,440 pax



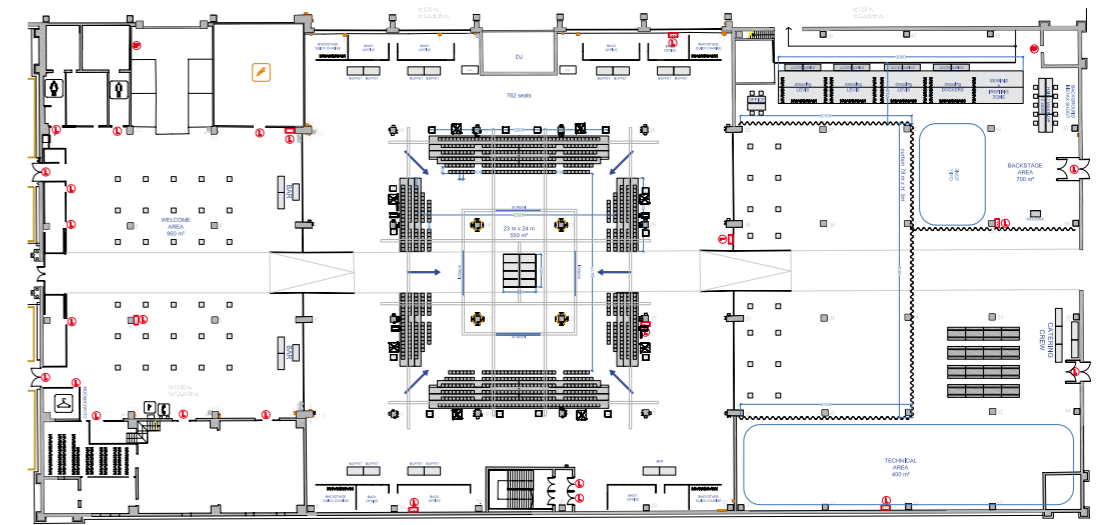
1,500 pax



600 pax



700 pax

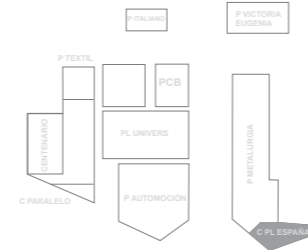




# CÓRNER PLAZA ESPAÑA

## CÓRNER PLAZA ESPAÑA

Gross Surface	3,200 m <sup>2</sup>
Ground Resistance	1,250 kg/m <sup>2</sup>
Capacity	1,120 pax



■ Press Area  
Includes Working Offices, Cloakroom, WC  
70 pax Conference Room

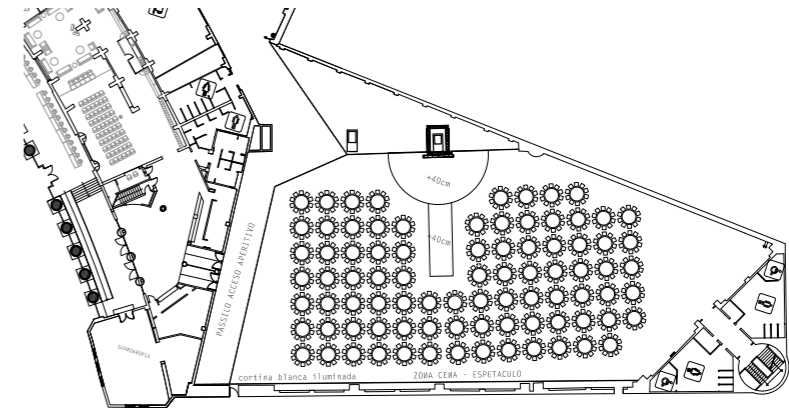


## LAYOUT EXAMPLES

400 pax



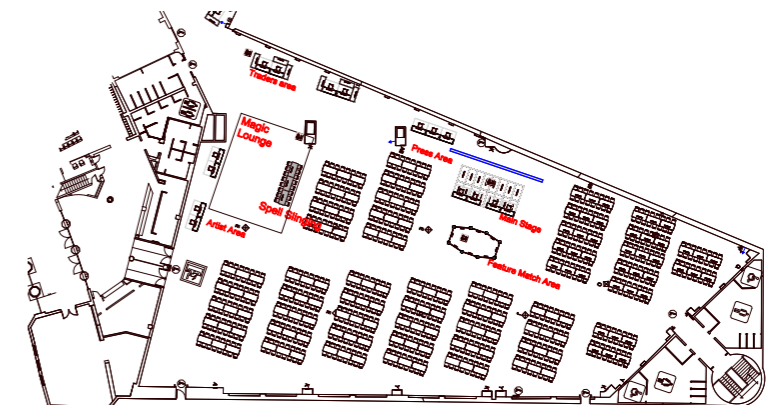
800 pax



600 pax



832 pax

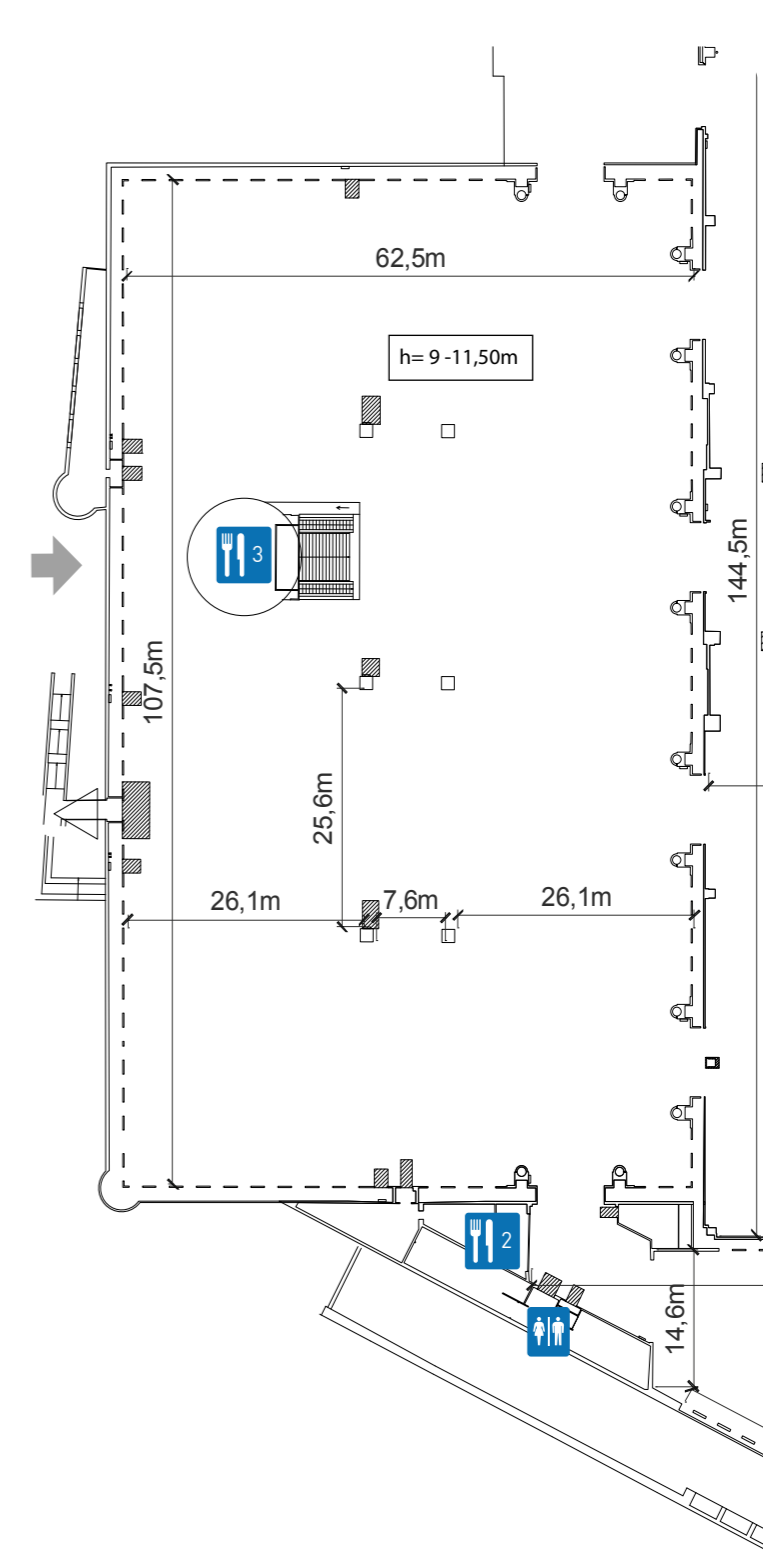
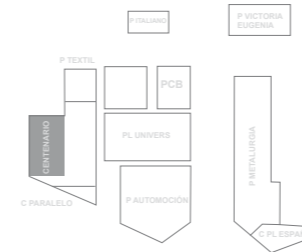




# PABELLÓN CENTENARIO

## PABELLÓN CENTENARIO

Gross Surface	6,900 m <sup>2</sup>
Ground Resistance	1,250 kg/m <sup>2</sup>
Capacity	8,352 pax



4  
10

4  
10

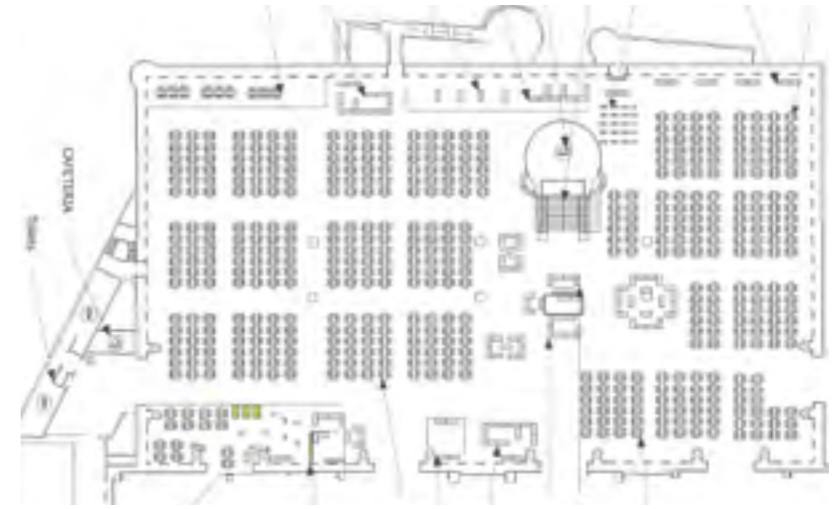
WC

For more info on catering outlets: [www.gastrofira.com](http://www.gastrofira.com)

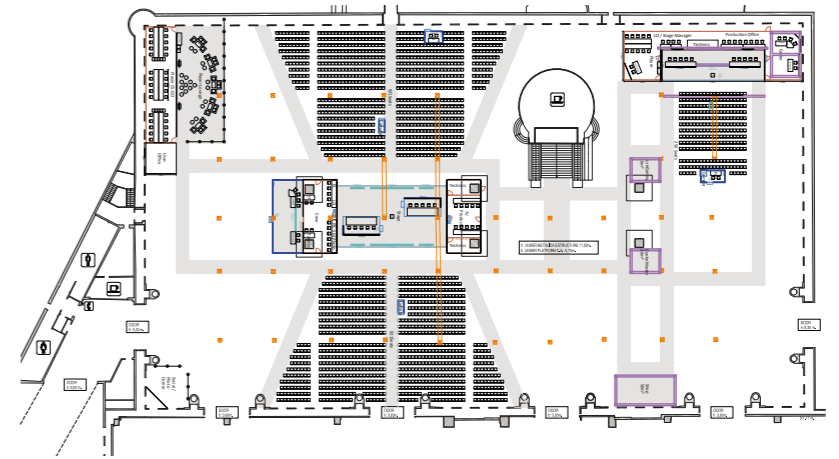
# LAYOUT EXAMPLES



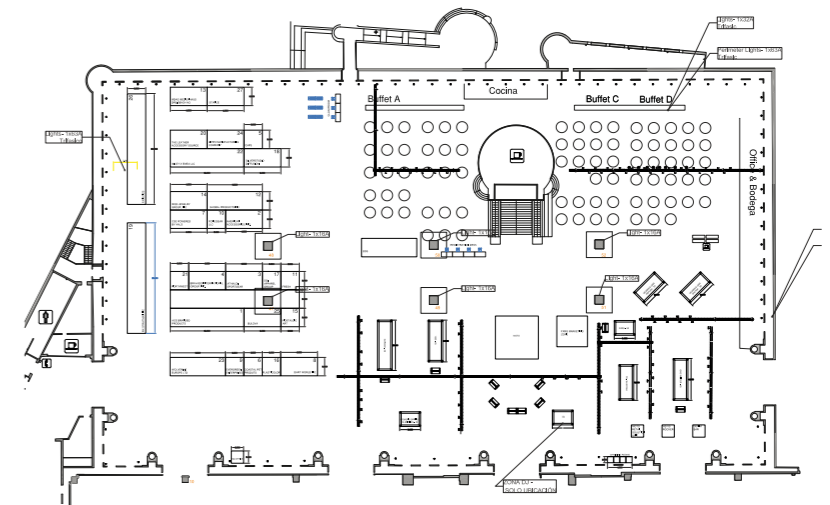
2,560 pax



1,842 pax



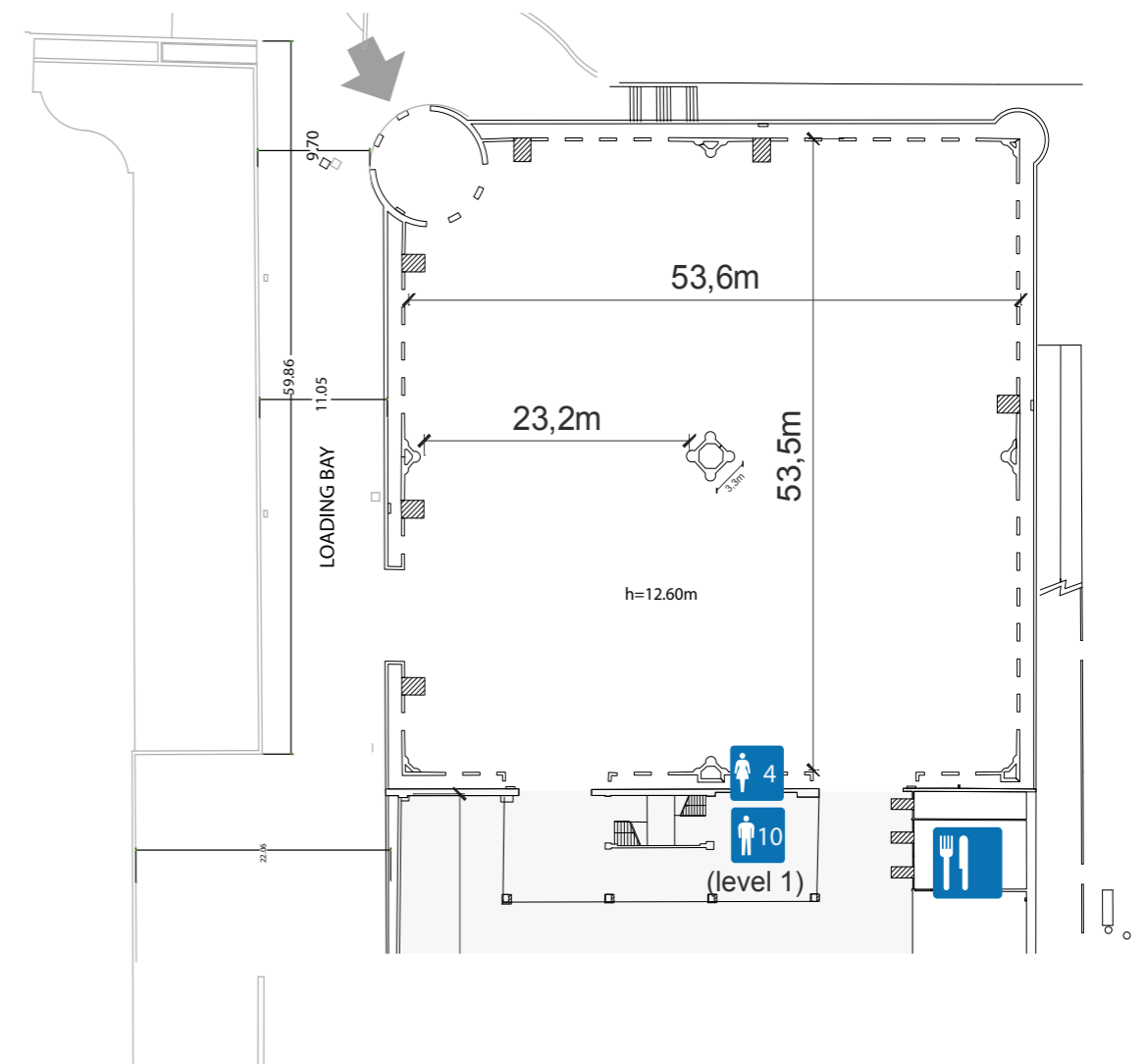
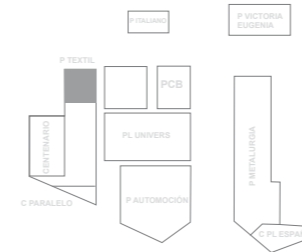
800 pax





# PABELLÓN TEXTIL

Gross Surface	2,800 m <sup>2</sup>
Ground Resistance	1,250 kg/m <sup>2</sup>
Capacity	2,250 pax

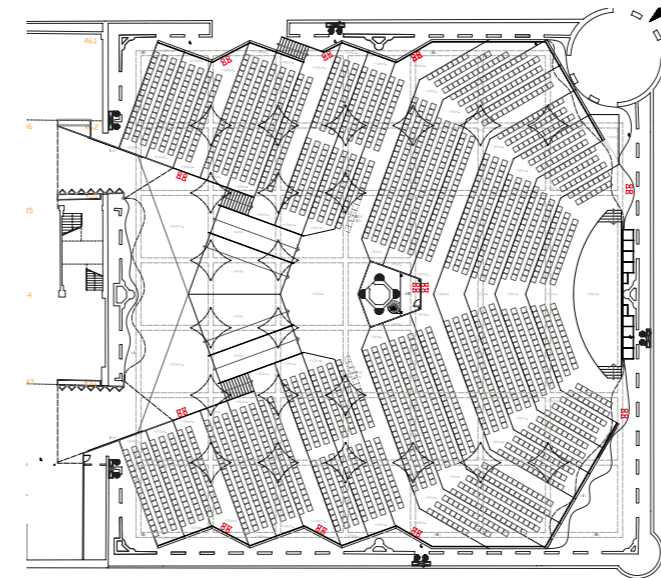


# PABELLÓN TEXTIL

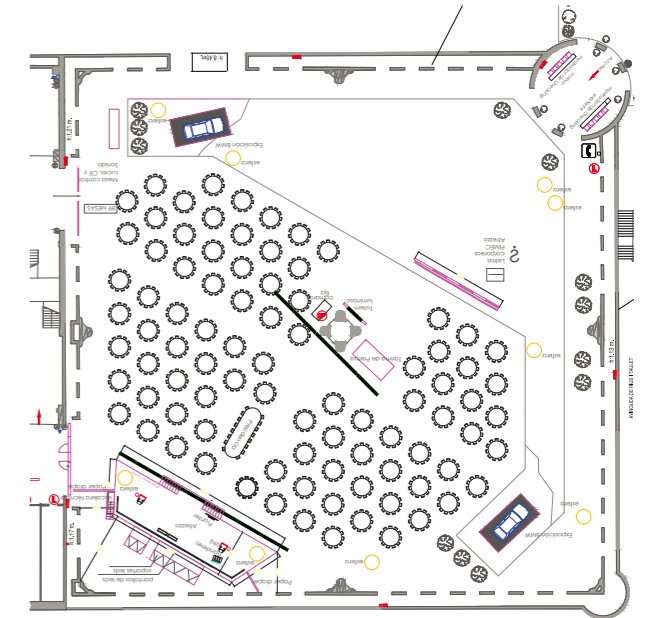


# LAYOUT EXAMPLES

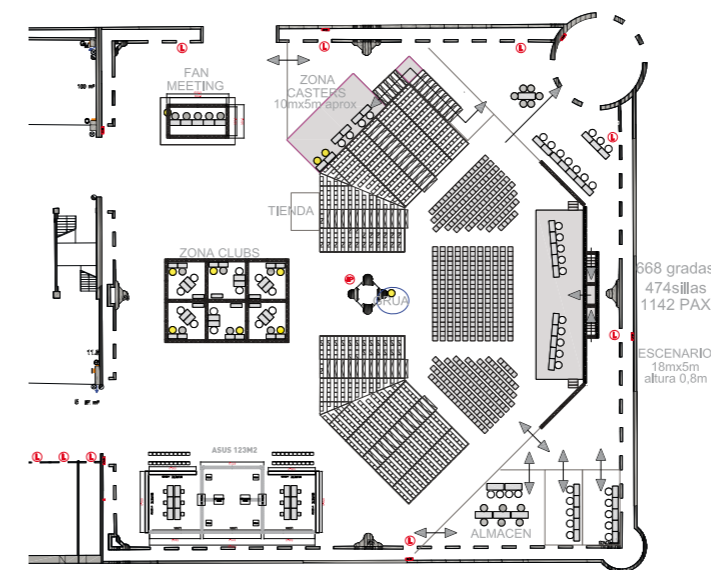
2,250 pax



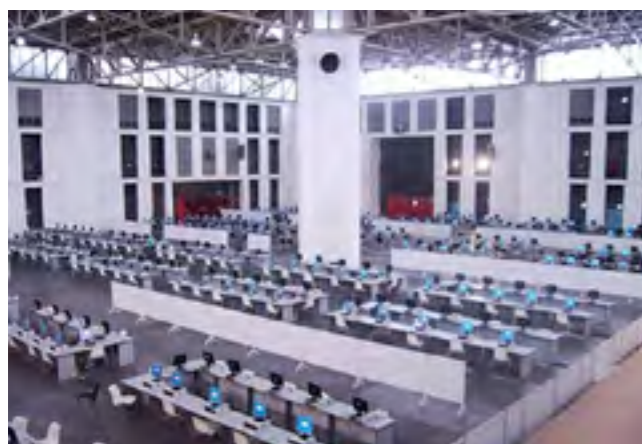
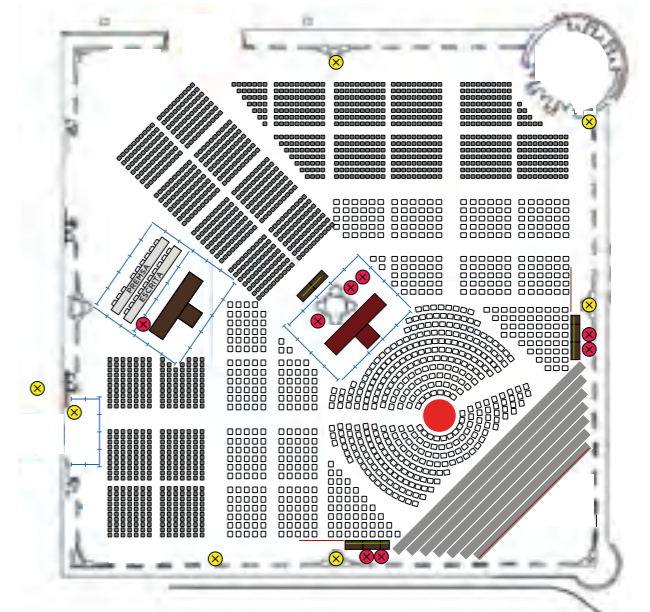
1,000 pax



1,200 pax



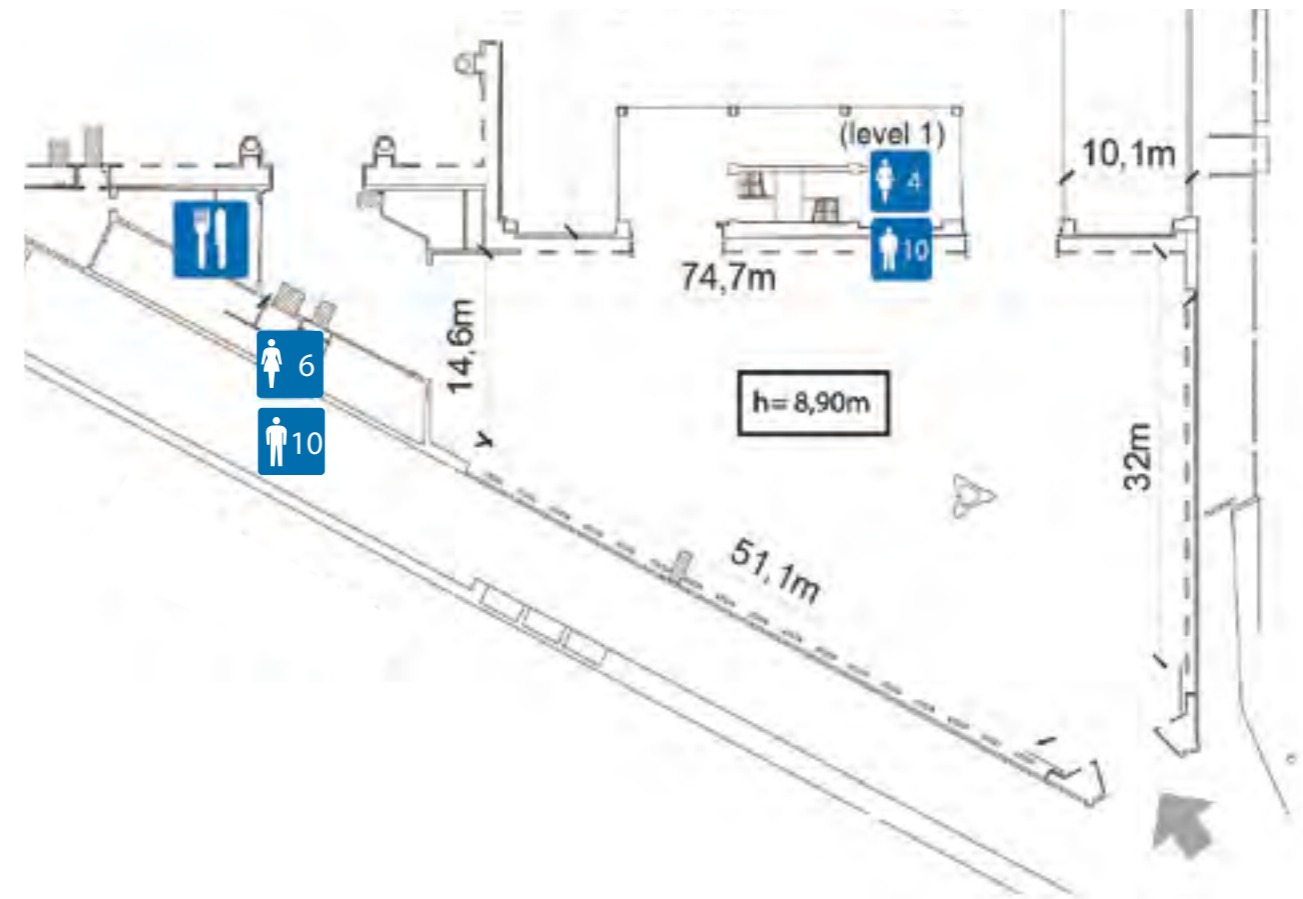
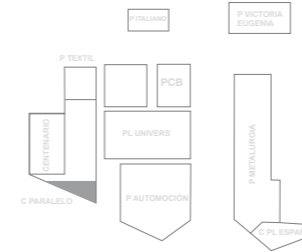
2,500 pax





# CÓRNER PARALELO

Gross Surface	1,600 m <sup>2</sup>
Ground Resistance	5,000 kg/m <sup>2</sup>
Capacity	1,500 pax

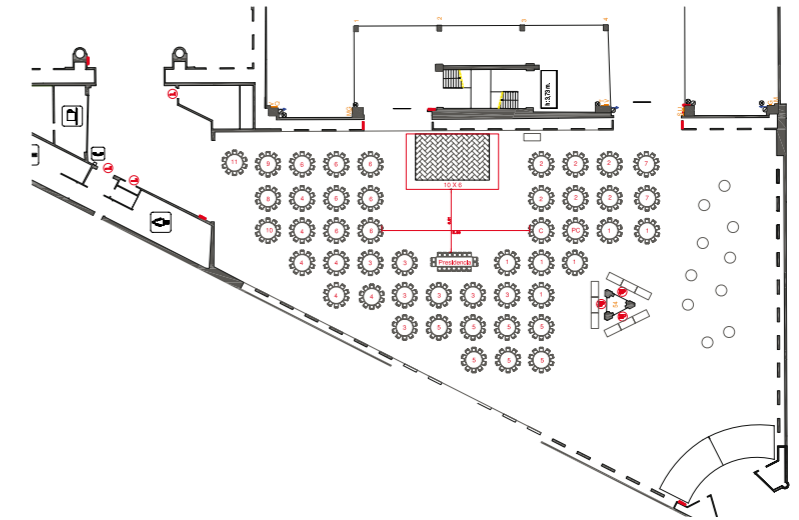


# CÓRNER PARALELO

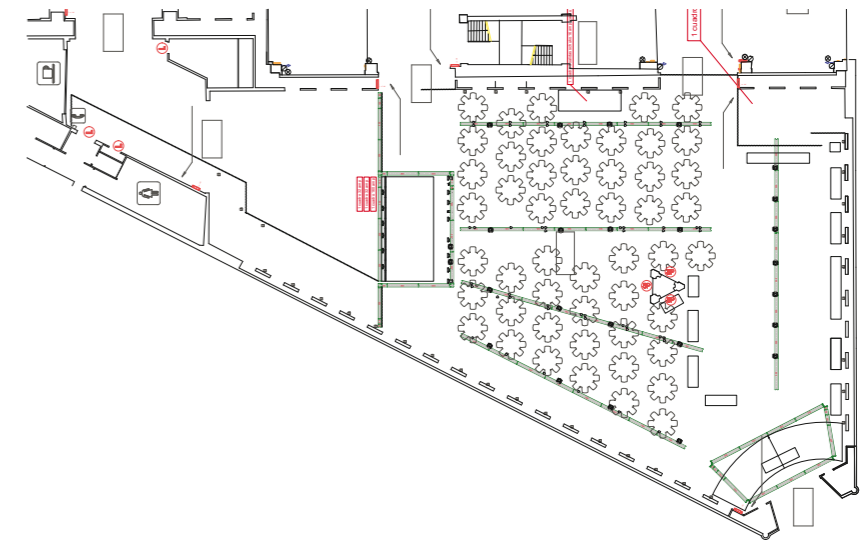


# LAYOUT EXAMPLES

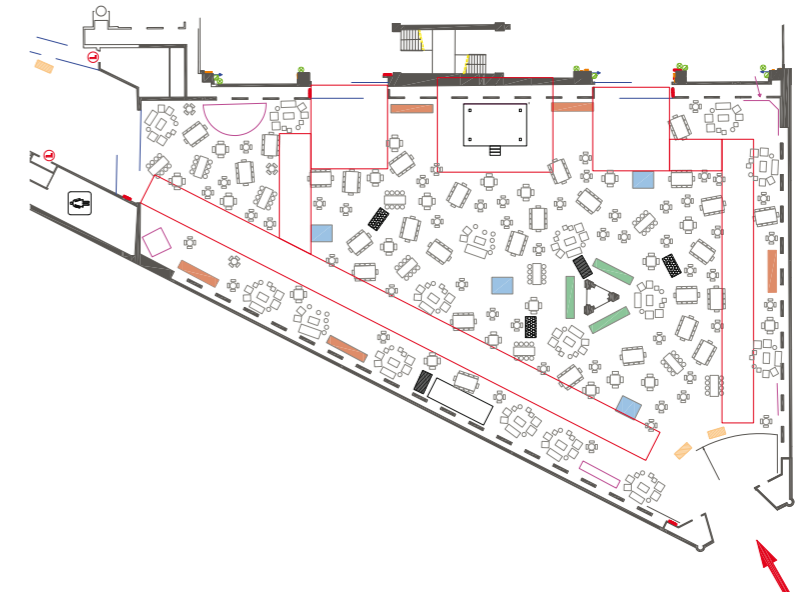
500 pax



500 pax



850 pax

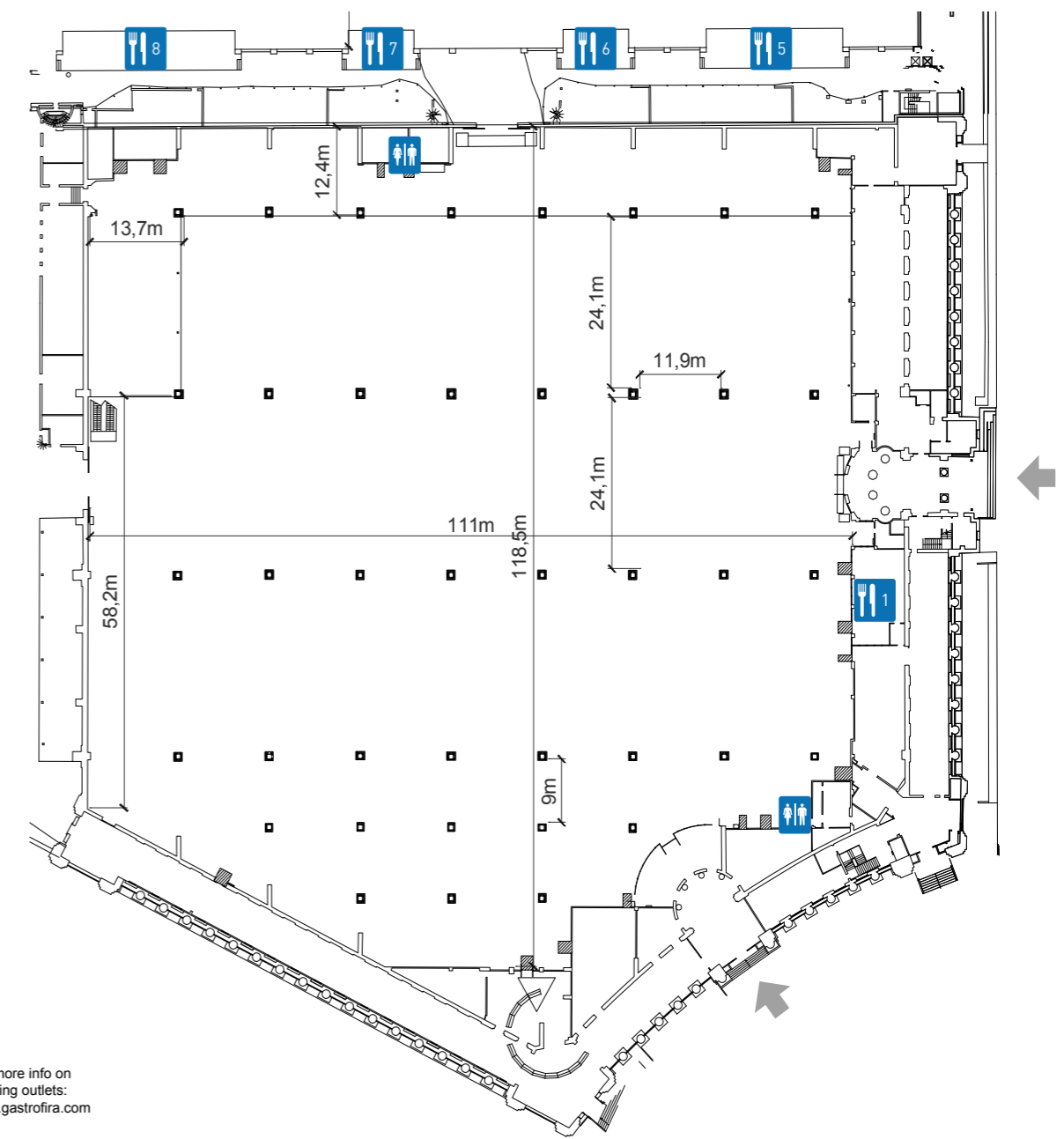
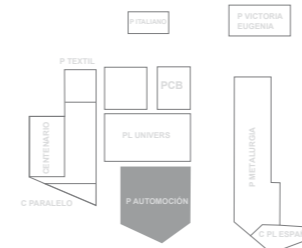
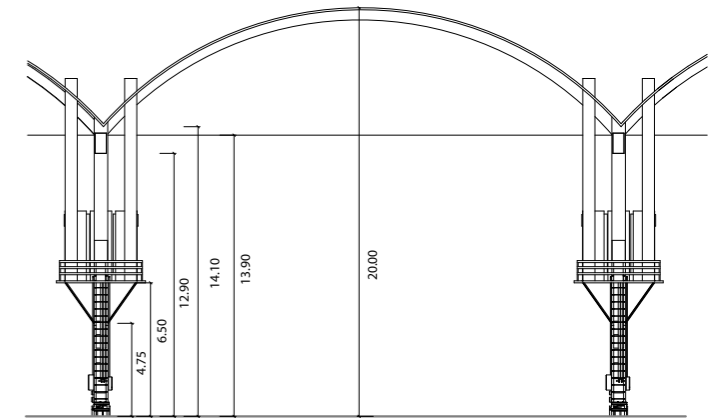




# PABELLÓN AUTOMOCIÓN

## PABELLÓN AUTOMOCIÓN

Gross Surface	14,000 m <sup>2</sup>
Ground Resistance	5,000 kg/m <sup>2</sup>
Capacity	5,400 pax



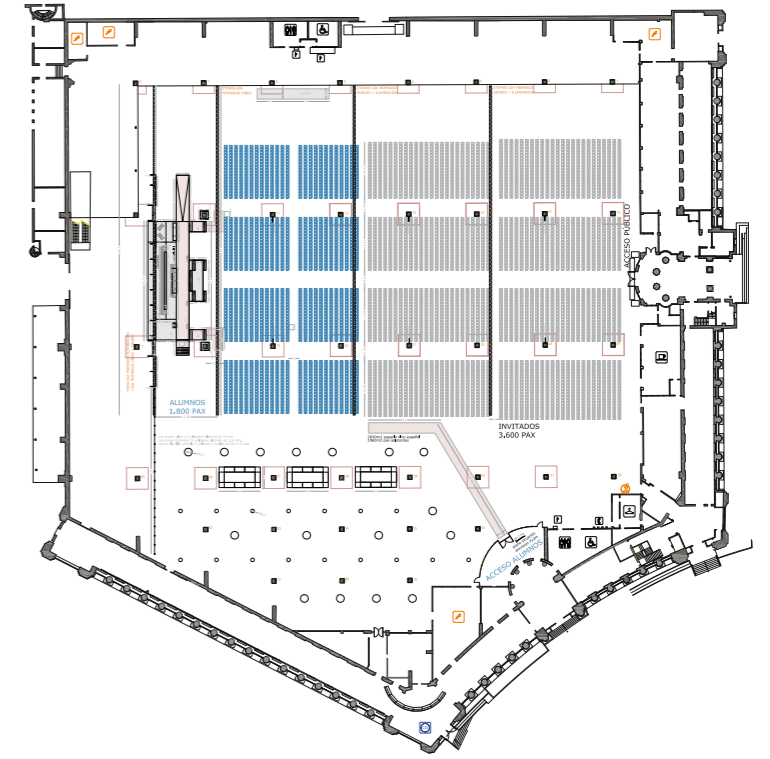
WC

For more info on catering outlets: [www.gastrofira.com](http://www.gastrofira.com)

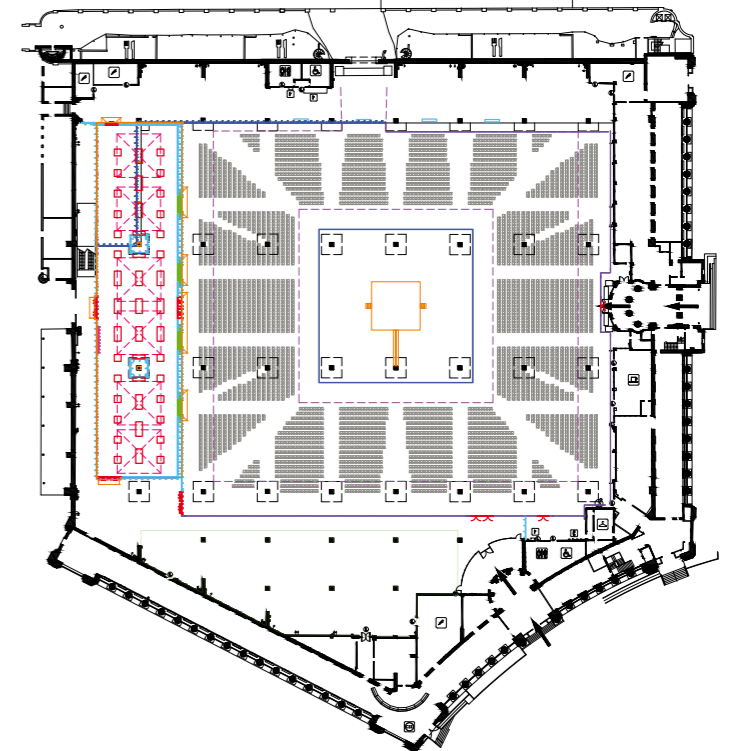
# LAYOUT EXAMPLES



5,400 pax



4,500 pax

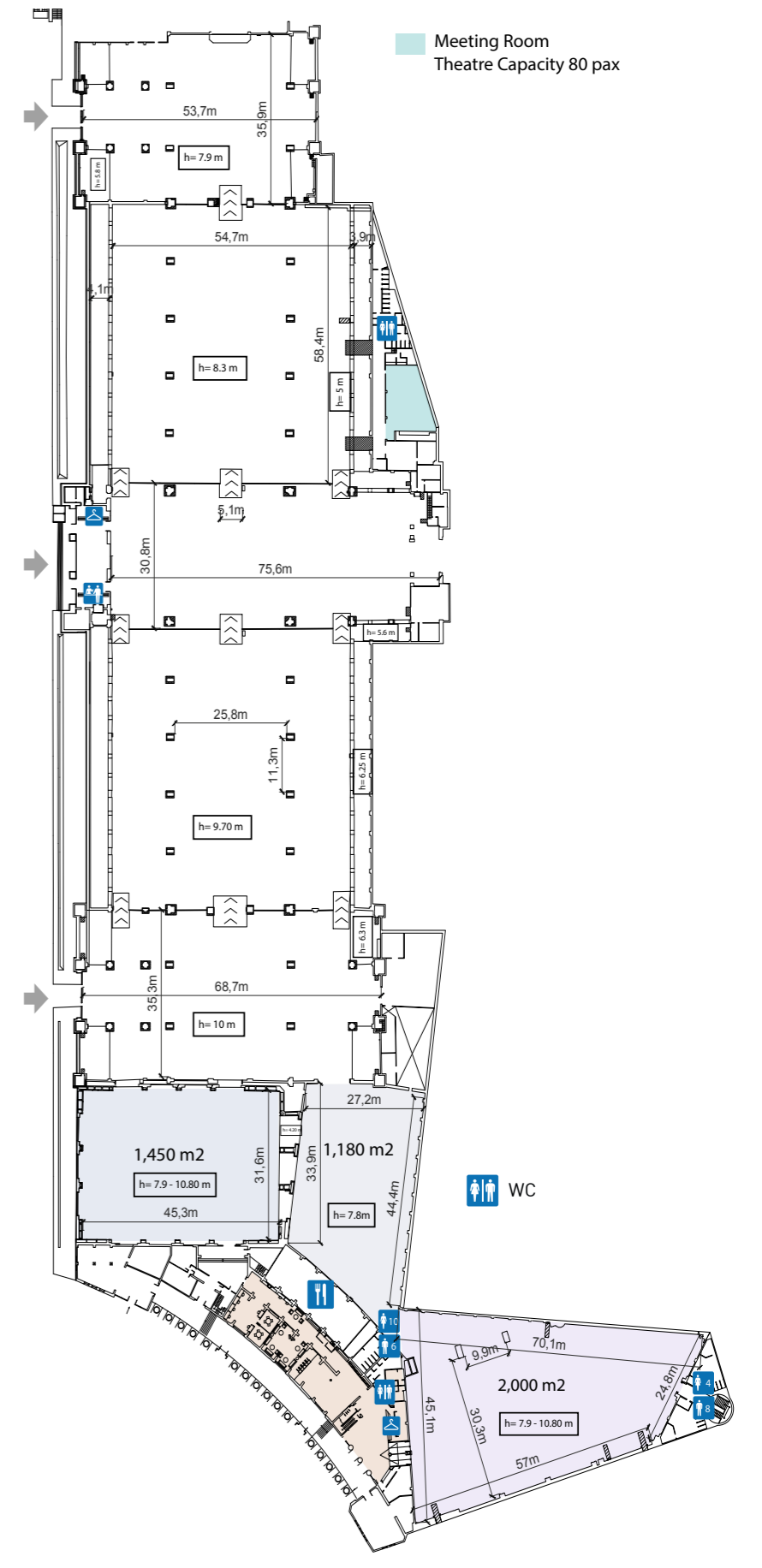
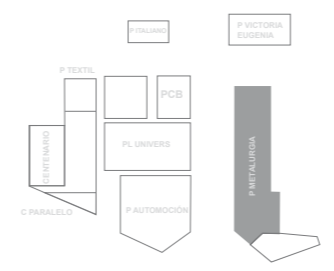




# PABELLÓN METALURGIA

## PABELLÓN METALURGIA

Gross Surface	19,000 m <sup>2</sup>
Ground Resistance	5,000 kg/m <sup>2</sup>
Capacity	4,700 pax



Press Area  
Includes Working Offices, Cloakroom, WC  
70 pax Conference Room

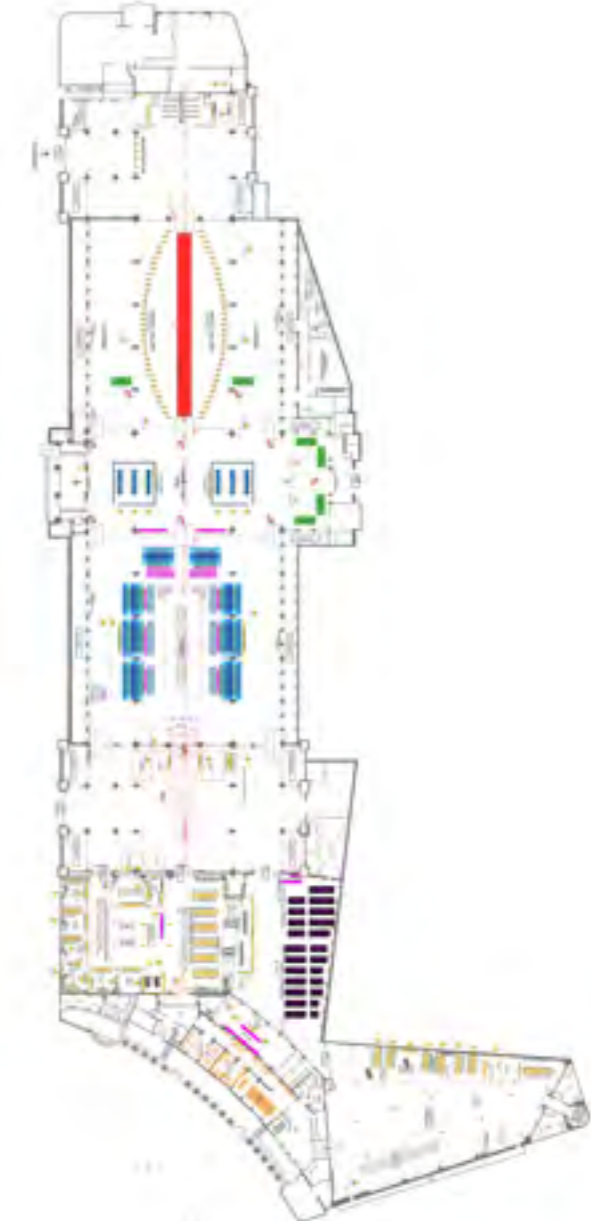
# LAYOUT EXAMPLES



2,000 pax



1,500 pax

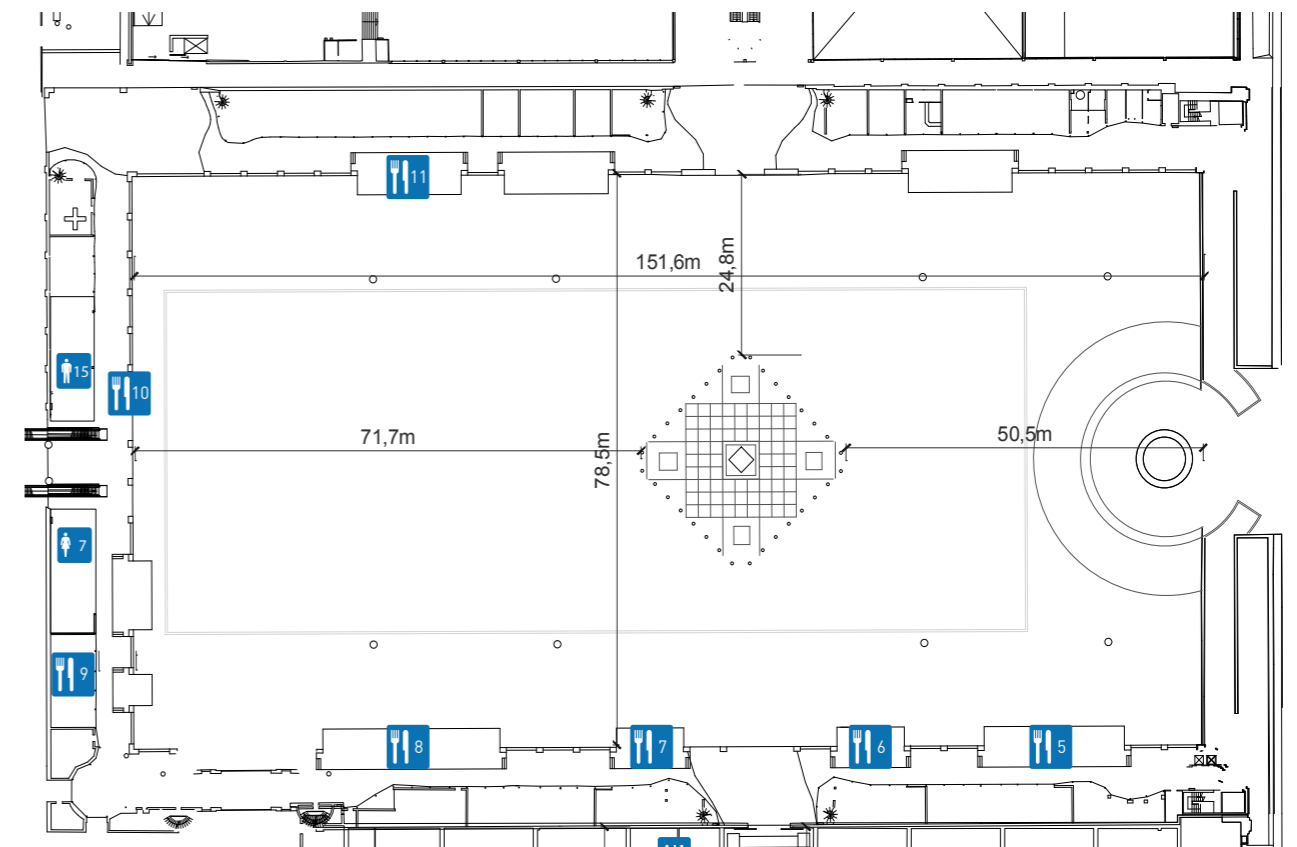
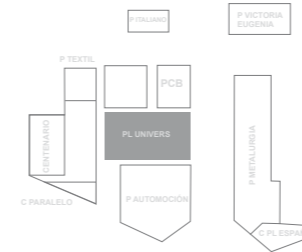




# PLAZA UNIVERSO

## PLAZA UNIVERSO

Gross Surface	12,500 m <sup>2</sup>
Ground Resistance	5,000 kg/m <sup>2</sup>
Capacity	9,000 pax



WC

For more info on catering outlets:  
[www.gastrofira.com](http://www.gastrofira.com)

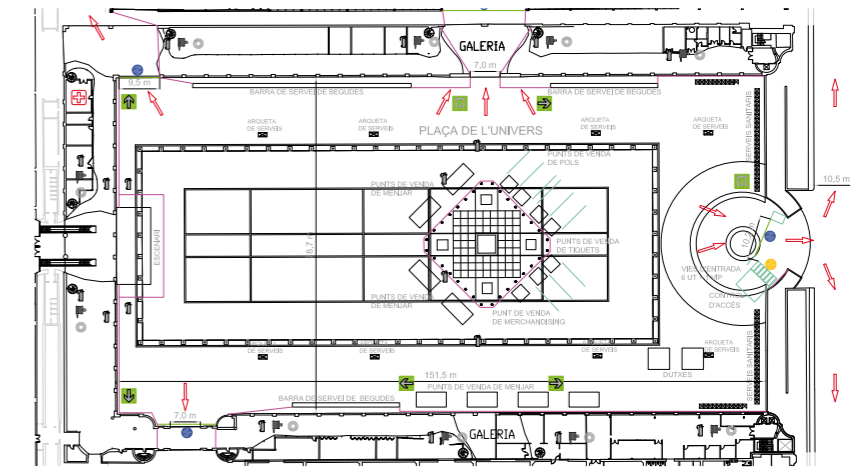
# LAYOUT EXAMPLES



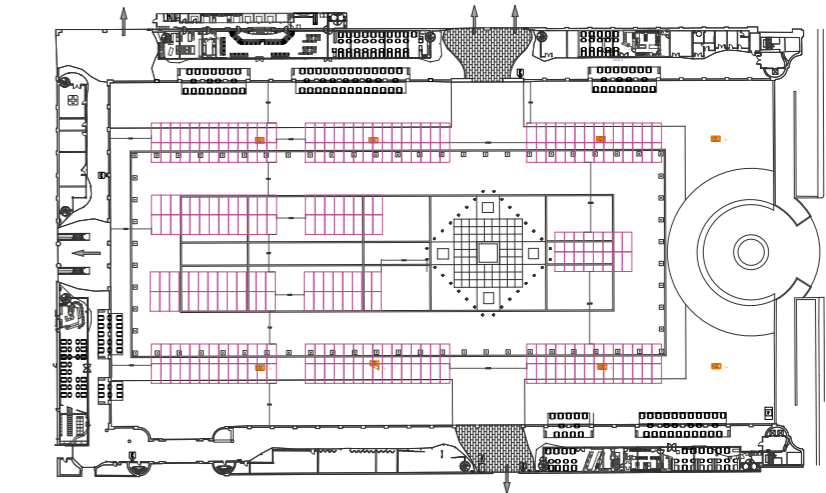
4,000 pax



9,000 pax



270 cars





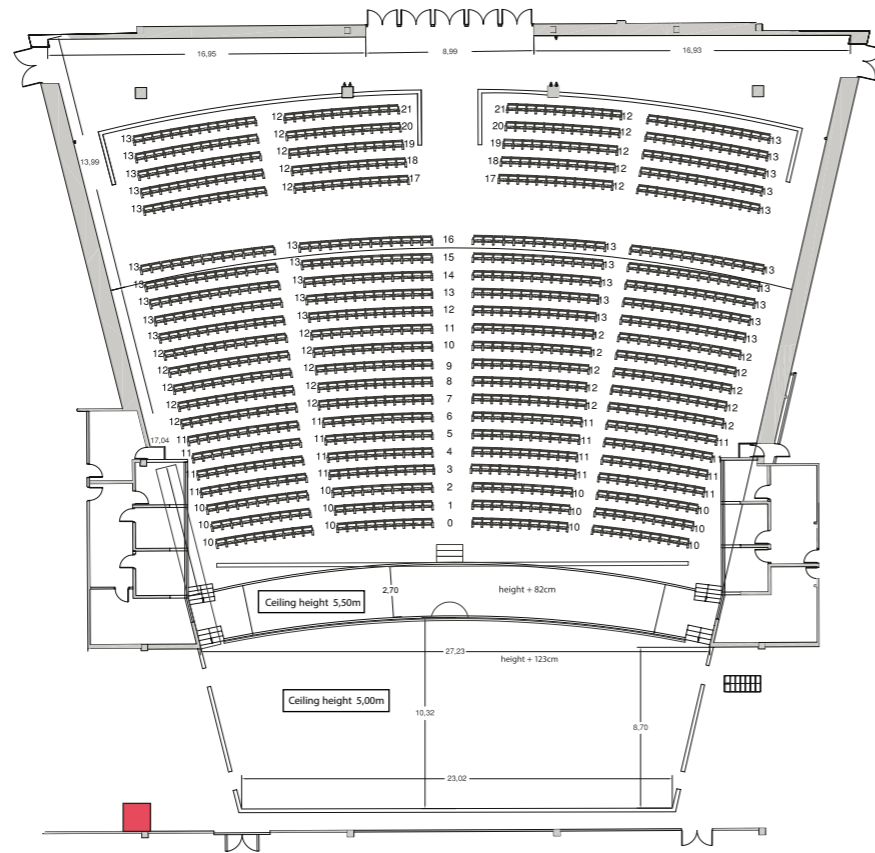
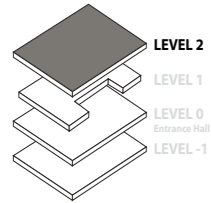
# AUDITORIUM

**Capacity** 1,609 pax

Lower level capacity: 1,046 pax

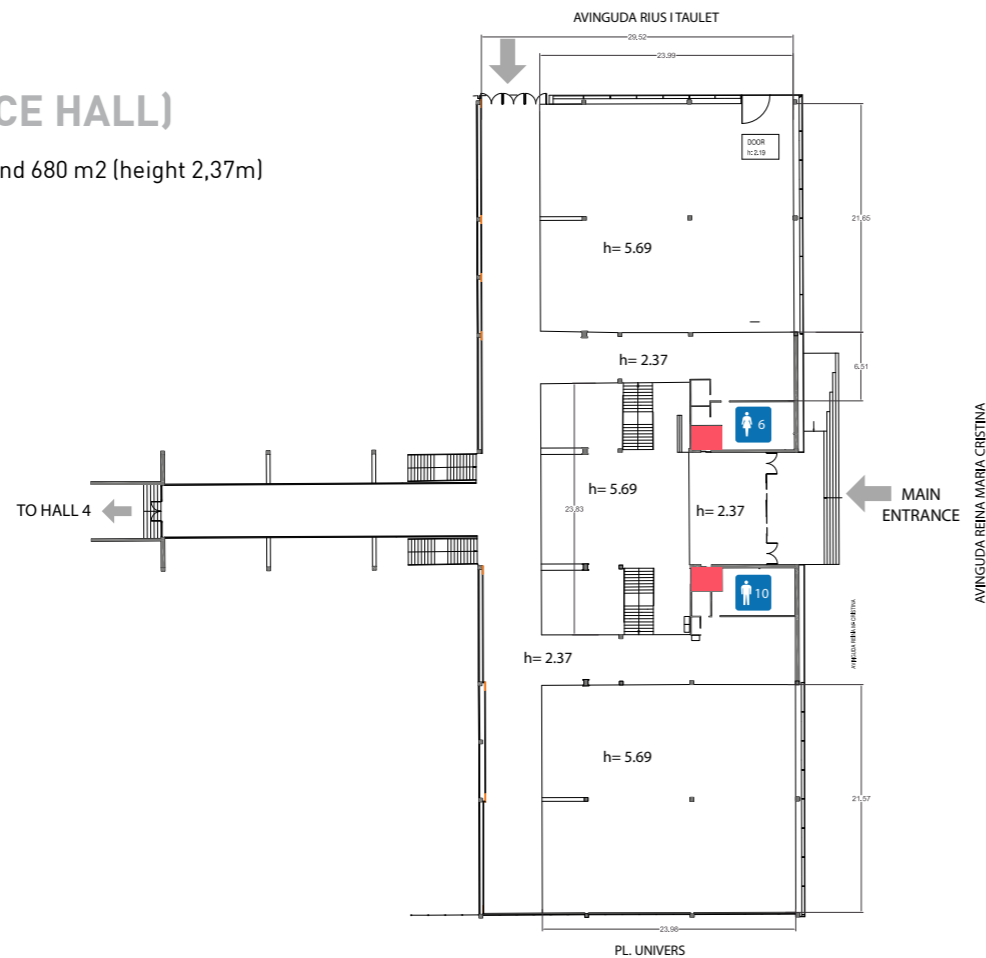
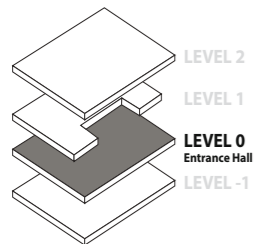
Upper level: 563 pax

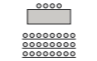
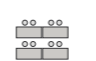
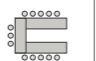
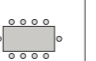


 GOODSLIFT



## LEVEL 0 (ENTRANCE HALL)

Surface 1,020 m<sup>2</sup> (height 5,69m) and 680 m<sup>2</sup> (height 2,37m)



	 Theatre	 School	 U-Shape	 Boardroom	 Cabaret	 Cocktail	Surface	Height	Length	Width
Auditorium	1,609	-	-	-	-	-	1,820m <sup>2</sup>	-	-	-
Room 1	-	-	-	16	-	-	41m <sup>2</sup>	3.3	8.9	4.9
Room 2	-	-	-	16	-	-	40m <sup>2</sup>	3.3	7.8	4.9
Room 3	150	80	19	34	40	134	183m <sup>2</sup>	3.4	18.8	9.6
Room 4	75	56	14	16	20	64	104m <sup>2</sup>	3.7	10.7	9.7
Room 5	250	132	36	-	60	200	281m <sup>2</sup>	3.5	26	10
Room 6	320	156	36	-	70	200	315m <sup>2</sup>	3.4	30	10
Room 7	-	-	20	24	-	-	42m <sup>2</sup>	3.4	7.7	5.3
Room 8	100	70	16	22	-	90	143m <sup>2</sup>	2.4	13	10
Room 9	100	50	16	-	40	90	138m <sup>2</sup>	2.5	14.1	9.4
Room 10	100	50	16	-	30	80	124m <sup>2</sup>	2.4	12.7	9.4
VIP Room	200	-	-	-	100	215	350m <sup>2</sup>	2.4	31	11
Level -1	-	-	-	-	1,500	2,000	3,846m <sup>2</sup>	5.5	78	49
Level 0	-	-	-	-	300 + 300	600	1,500m <sup>2</sup>	5.7 & 2.37	76	30
Level 2 (foyer)	-	-	-	-	-	450	860m <sup>2</sup>	3.6 / 2.35	-	-

The default layout of the rooms is theatre style, except rooms 1 & 2. If you wish to have a different layout, please contact us.

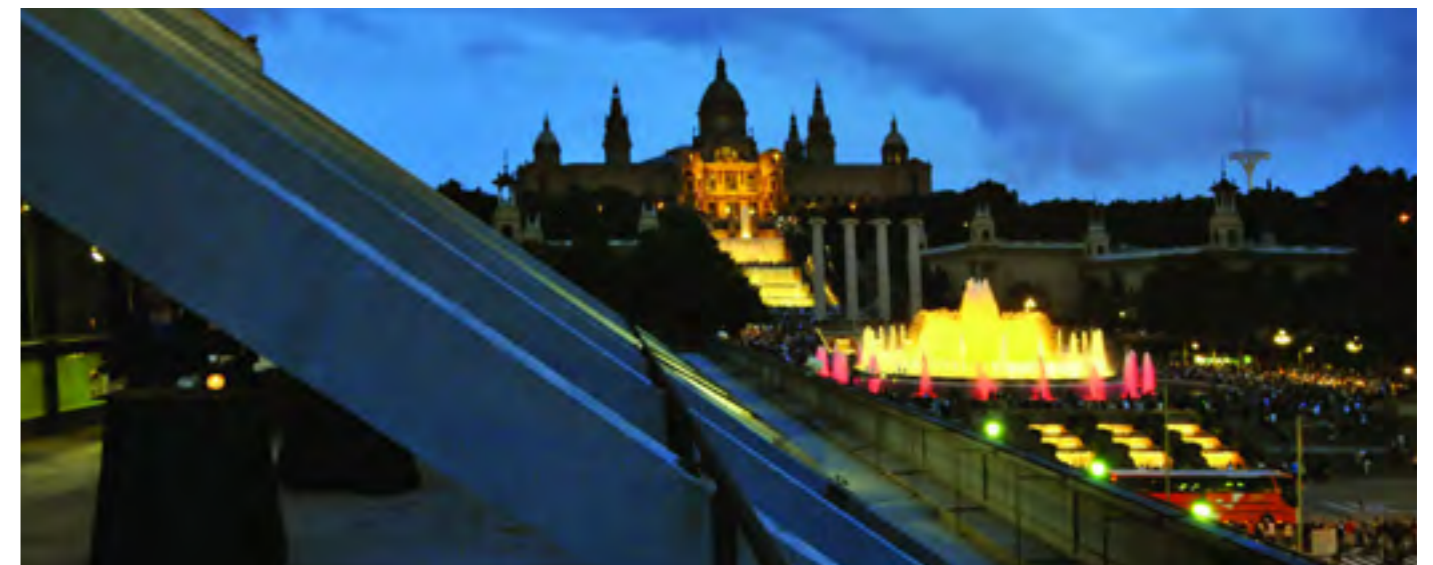
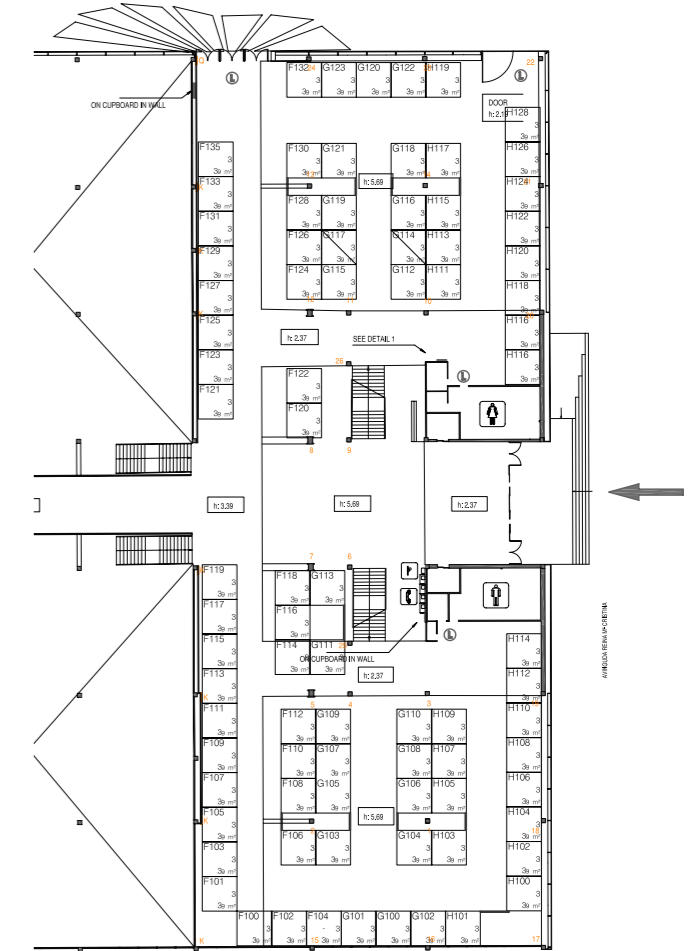
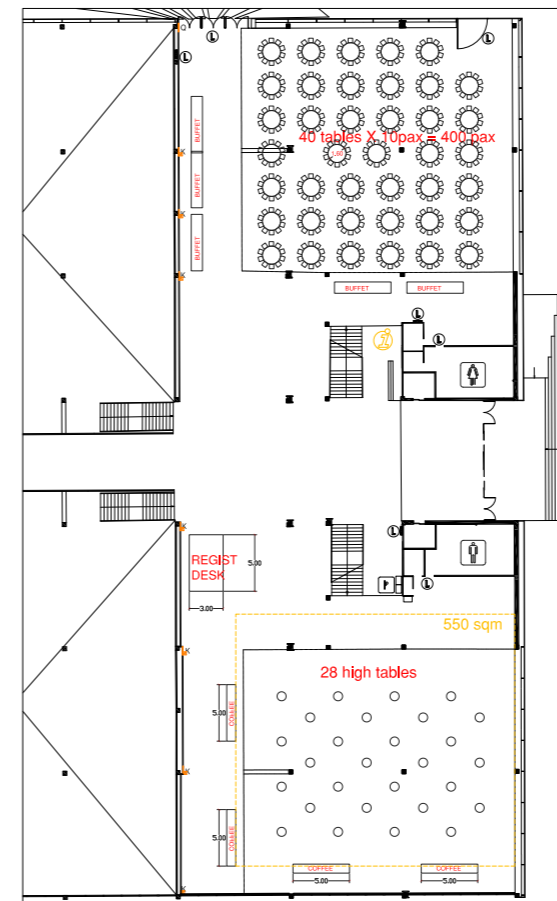
For more information (AV packs, PDF and DWG floorplans, pictures and virtual tours of each room) please visit [www.firabarcelona-guestevents.com/en/montjuic/palau-congressos](http://www.firabarcelona-guestevents.com/en/montjuic/palau-congressos)



# LAYOUT EXAMPLES

800 pax

Stands 3X3m

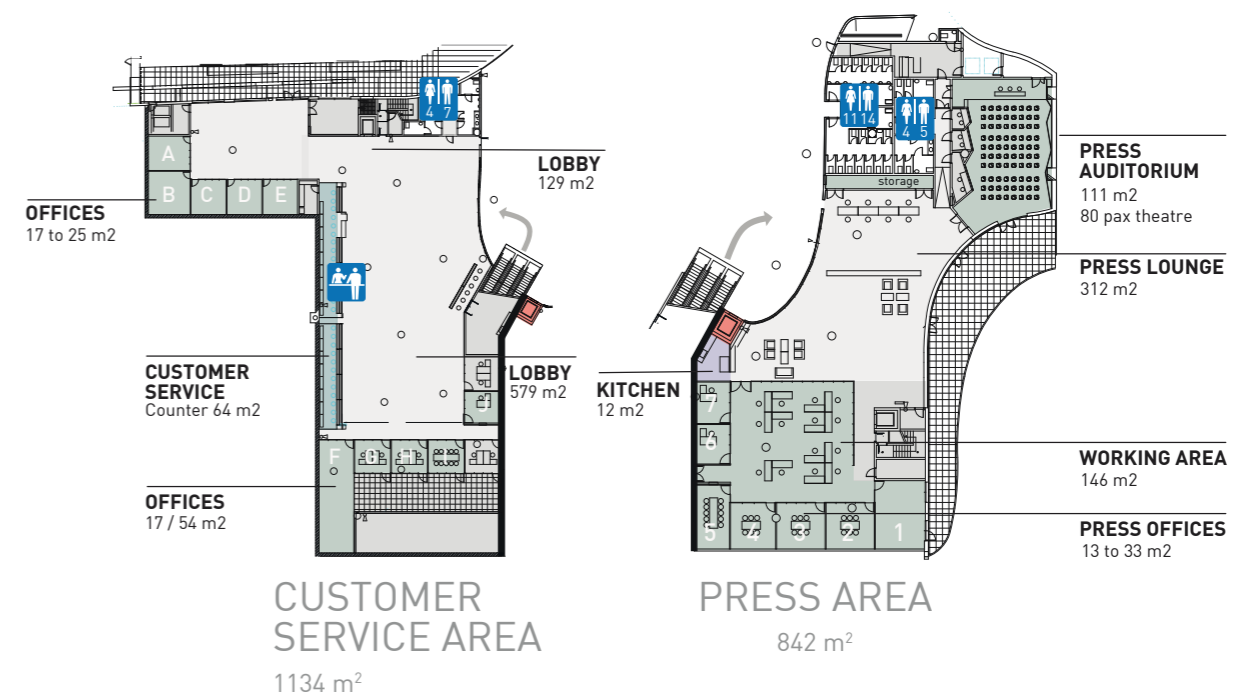
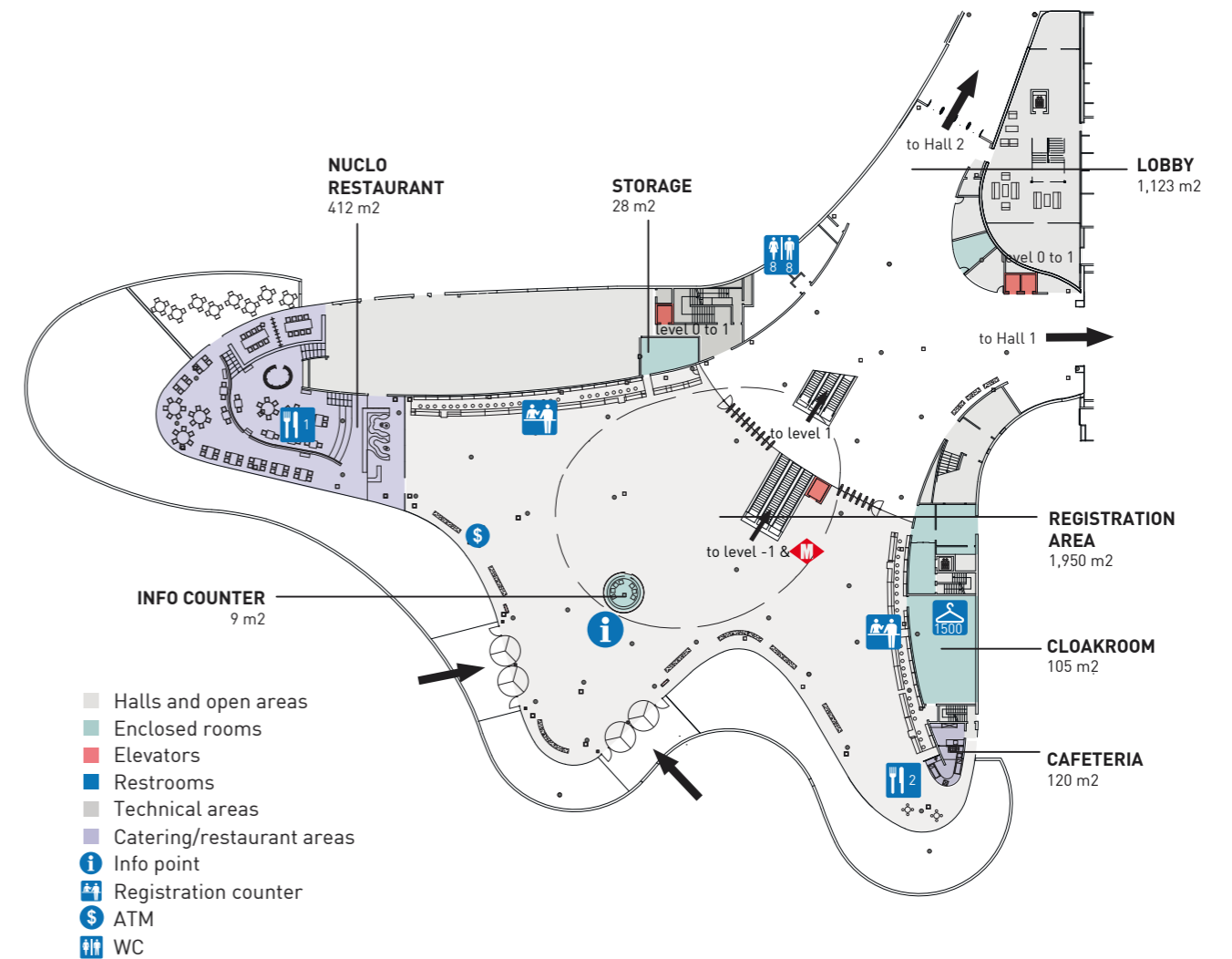
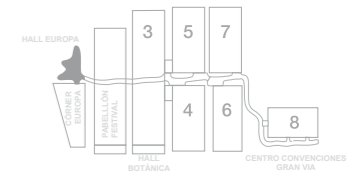


# HALL EUROPA



## HALL EUROPA

Gross Surface	1,950 m <sup>2</sup>
Capacity	1,000 pax

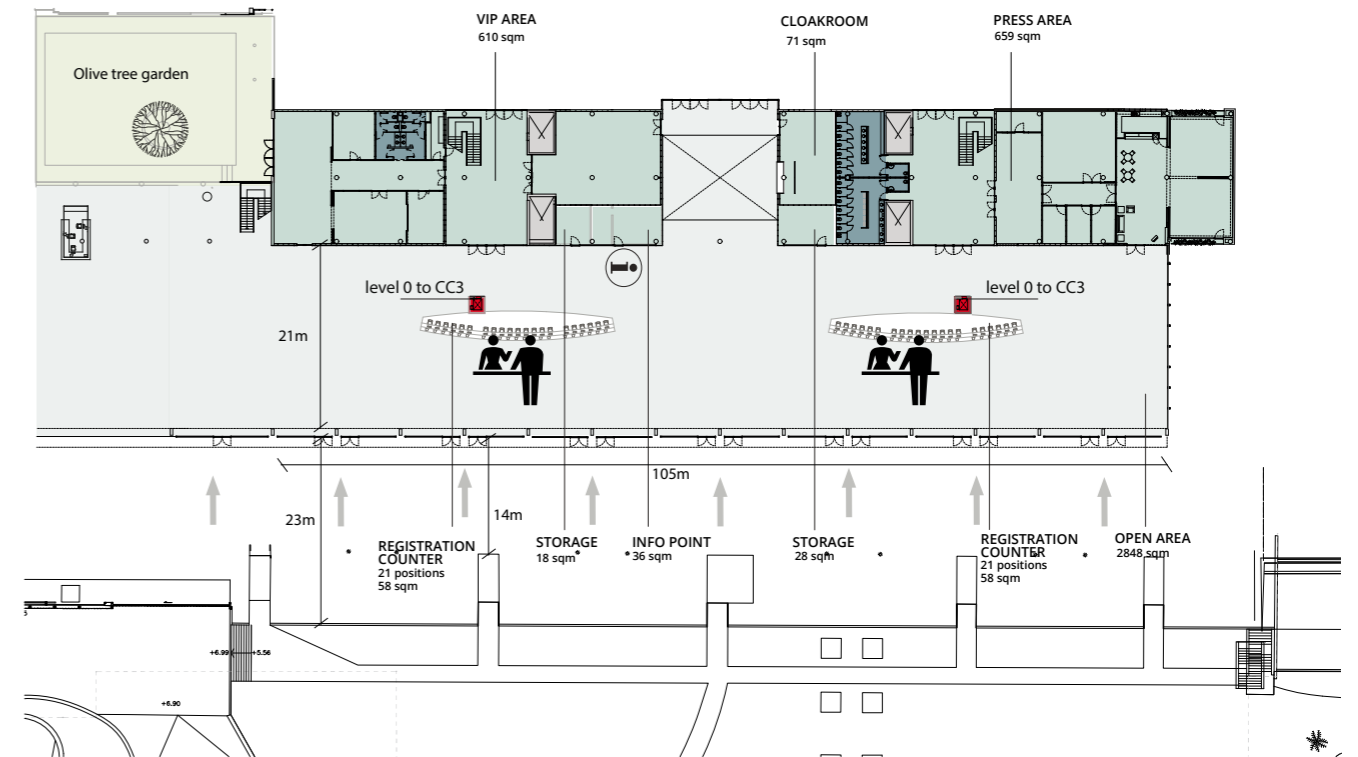
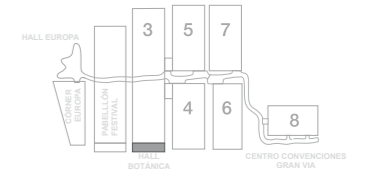






# HALL BOTÁNICA

Gross Surface 2,800 m<sup>2</sup>  
 Capacity 2,500 pax



# HALL BOTÁNICA

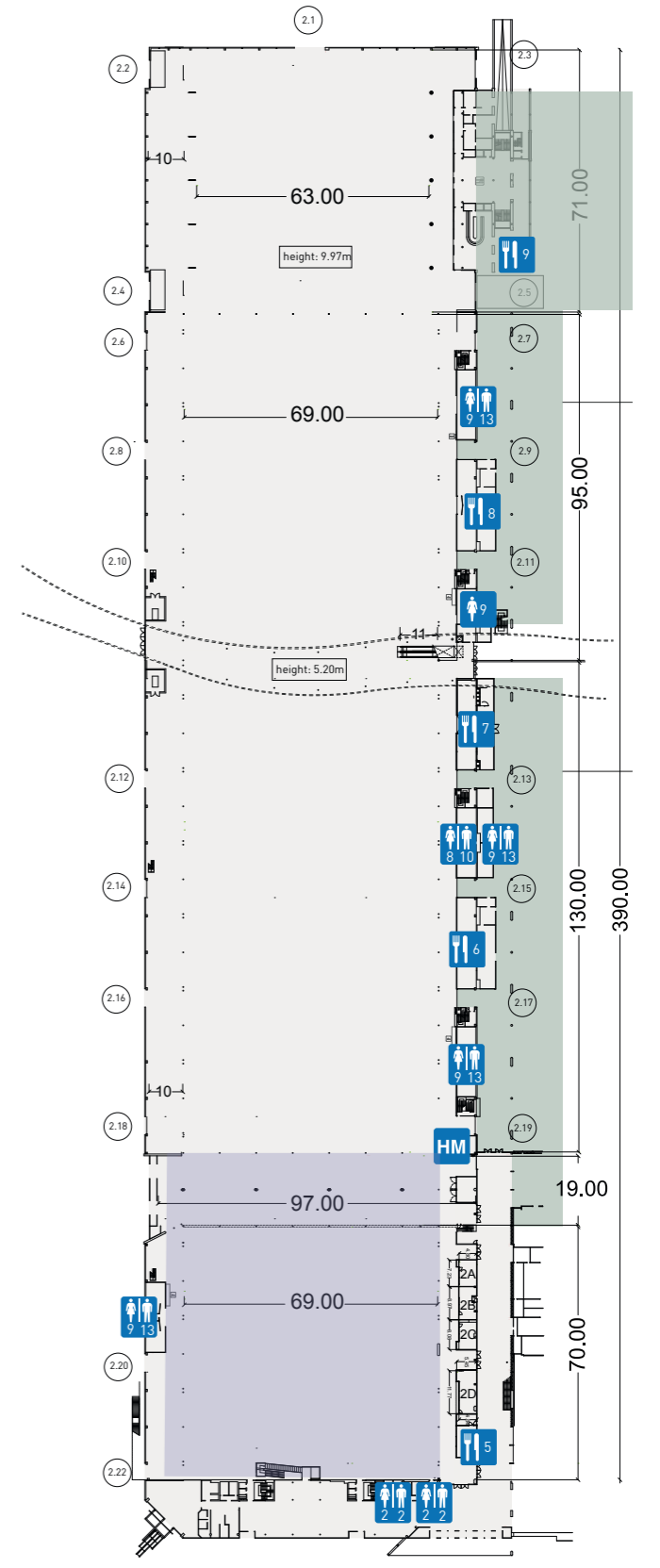
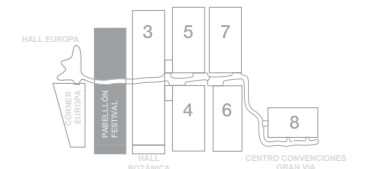




# PABELLÓN FESTIVAL

## PABELLÓN FESTIVAL

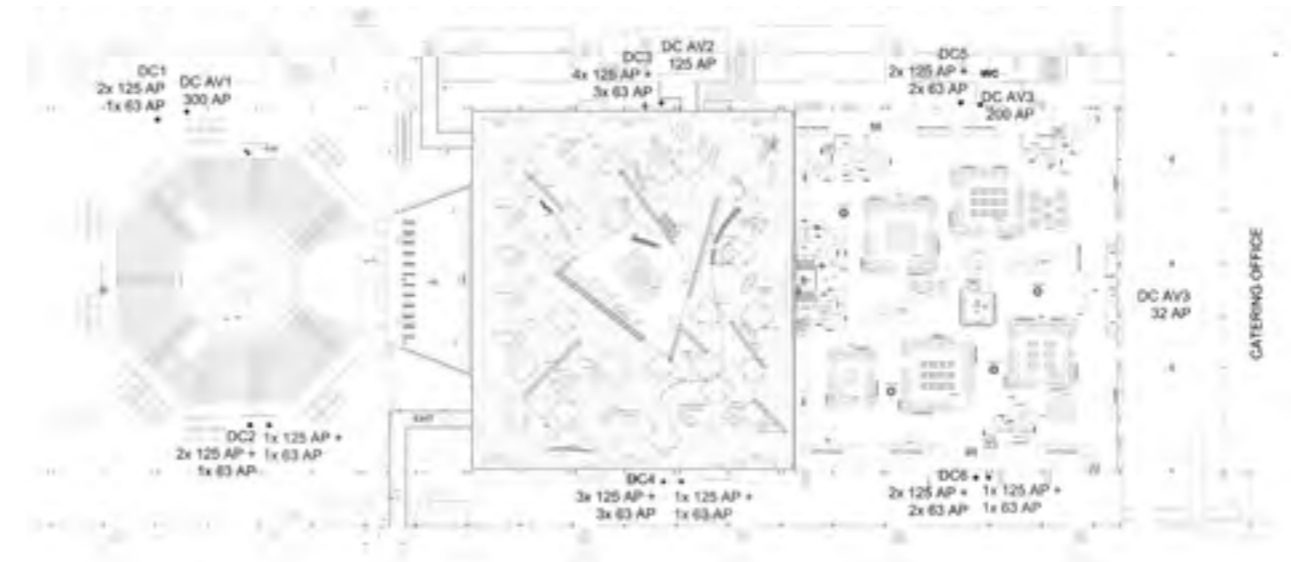
Gross Surface	32,000 m <sup>2</sup>
Ground Resistance	5,000 kg/m <sup>2</sup>
	1,800 kg/m <sup>2</sup>
Height	9.50 - 12m



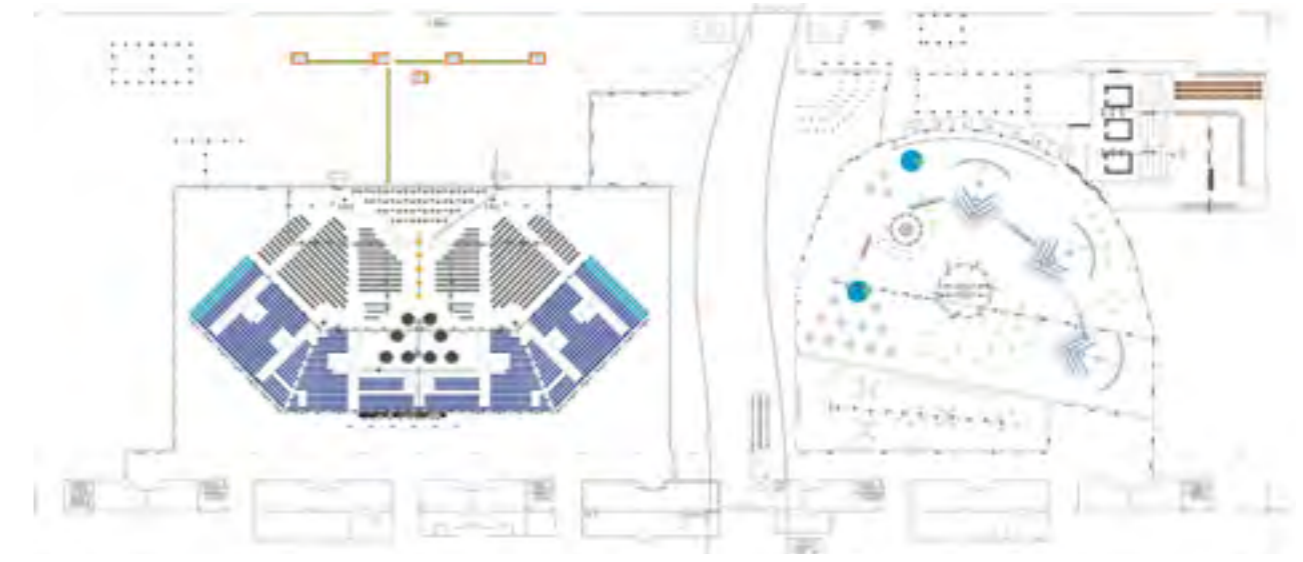
# LAYOUT EXAMPLES



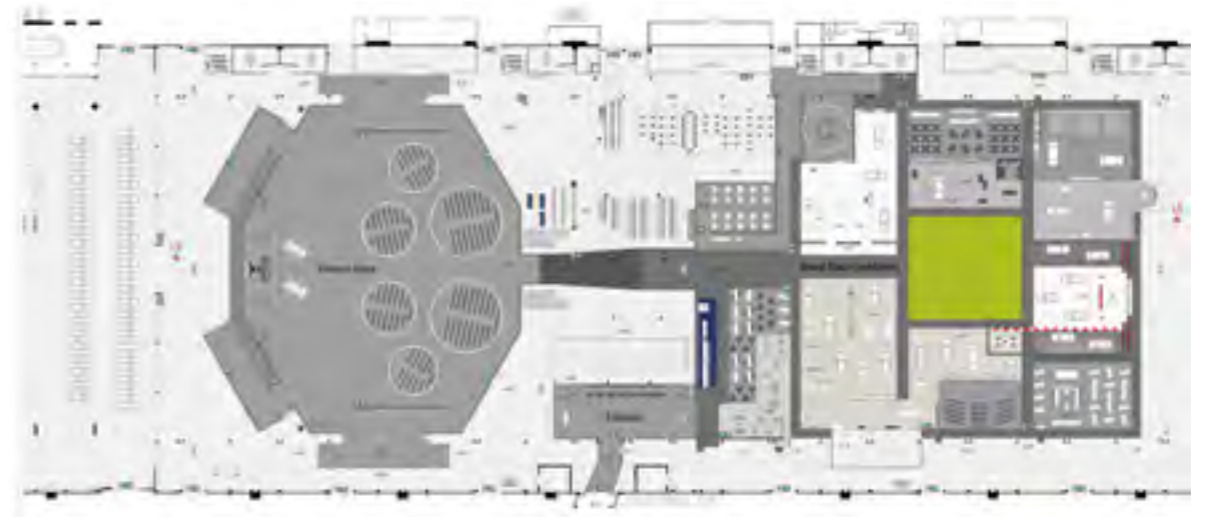
2,500 pax



3,200 pax



3,000 pax

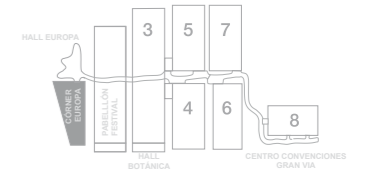




# CÓRNER PLAZA EUROPA

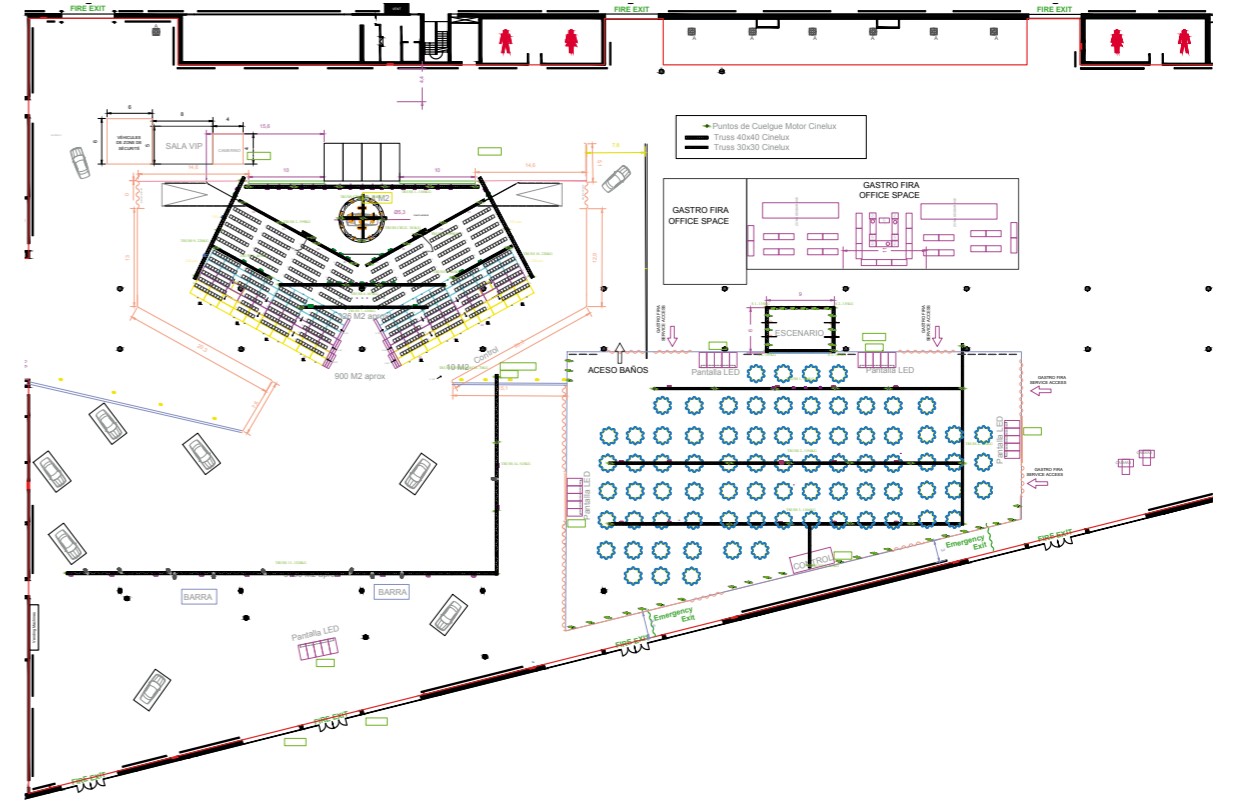
## CÓRNER PLAZA EUROPA

Gross Surface	14,000 m <sup>2</sup>
Ground Resistance	3,000 kg/m <sup>2</sup>
Capacity	9,160 pax



# LAYOUT EXAMPLES

800 pax



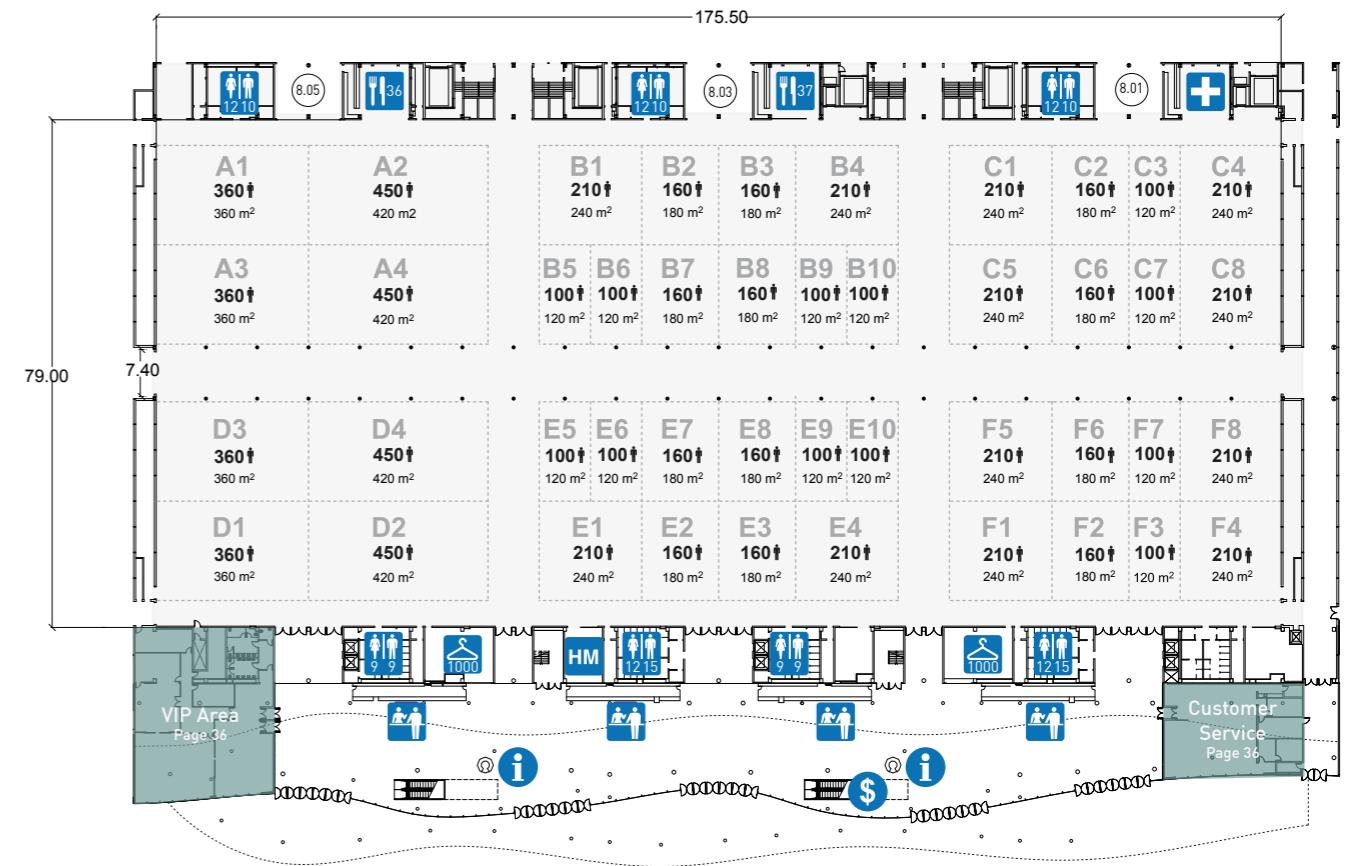


# CENTRO CONVENCIONES GRAN VIA

## CENTRO CONVENCIONES GRAN VIA



Gross Surface	24,500 m <sup>2</sup>
Ground Resistance	1,500 kg/m <sup>2</sup>
Capacity	5,000 pax



All possible divisions that can be created with the completely soundproof air wall system. Capacities of rooms differ from 2,500 to 100 seats in theatre style.



# LAYOUT EXAMPLES



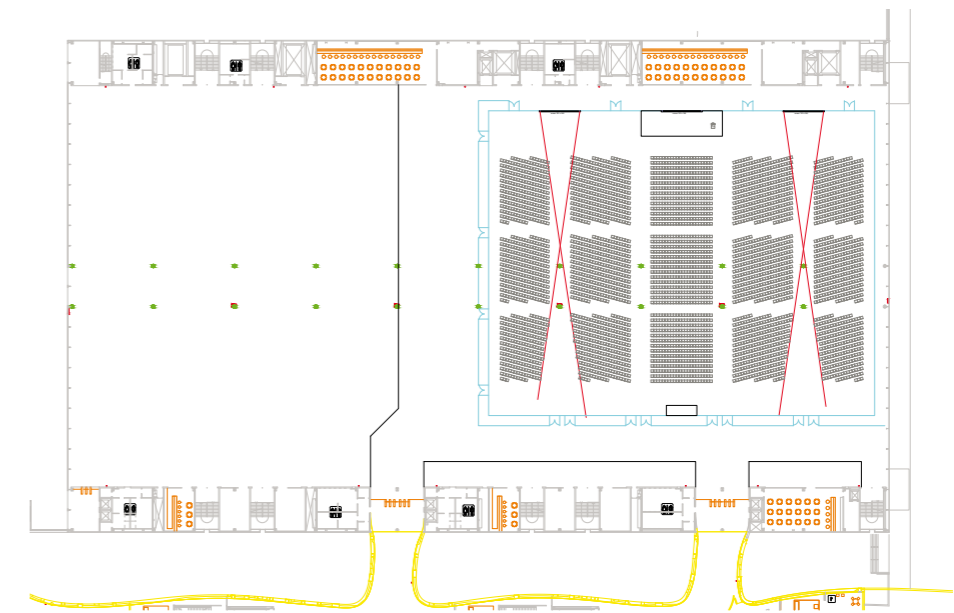
960 pax



1,600 pax



4,000 pax





**Fira Barcelona**

[guestevents@firabarcelona.com](mailto:guestevents@firabarcelona.com)

[espacios-singulares.firabarcelona.com](http://espacios-singulares.firabarcelona.com)

+34 93 233 20 00